

SIDE Y

- Thread lower mount (M) onto vertical bar (F).
- Install floor cap (P) under lower hinge (E).
- Insert upper mount (L) onto upper securing hinge (C) and hold in place.
- Insert vertical bar (F) into lower hinge (E) and upper mount (L).
- Insert securing screw (D) and position in place with Allen Key (Q).



- 7** Align both sides with template and affix with screws (N).



- 8** Position barrier gate/ fireplace guard into desired shape, then lock and secure by firmly tightening all securing screws (D) using Allen Key (Q).



**Assembled
Fireplace Guard**



**Assembled
Barrier Gate**

GATE OPERATION

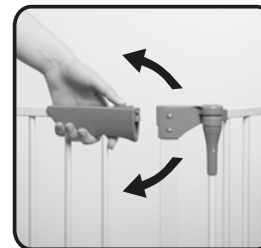
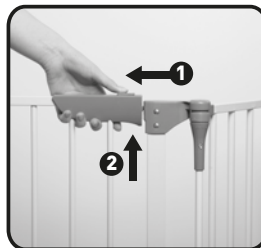
Slide the release switch (H) and lift gate panel (A).

Gate swings in both directions.

Swing gate closed ensuring upper (I) and lower (J) locks engaged.

Swing gate fully open to engage SMART STAY OPEN feature.

Caution: Keep gate closed when children are present.

**MAINTENANCE & CARE**

- Play-Pen/Fireplace Guard/Barrier Gate must be fitted according to instructions to ensure it works correctly.
- Regularly check all parts to ensure Play-Pen/Fireplace Guard/Wide Barrier Gate is secure. Adjust as required.
- Only use Dreambaby® spare parts.
- To clean, wipe surface with a damp cloth using mild detergent and warm water.
Never clean with abrasive, ammonia, bleach or spirit based type cleaner.

Look for the Dreambaby® range of Child Safety and Care Products.

Tee-Zed acknowledges that its customers may be entitled to statutory consumer guarantees and does not seek to exclude or limit them. These guarantees include that Tee-Zed's products are of acceptable quality. This Tee-Zed product is for the specific purpose detailed in the instructions and packaging and Tee-Zed considers use outside of that purpose to be abnormal use. To the maximum extent permitted by law, Tee-Zed does not accept any liability for damage:

- arising from abnormal use of the products;
- caused by installation or removal of the products other than in accordance with the supplied installation and removal instructions; or
- arising under the law of tort or contract.

Dreambaby® products by



Tee-Zed Products Pty Ltd, PO Box 2022, Bondi Junction NSW 1355
Australia Tel: +61 (0)2 9386 4000

Tee-Zed Products (N.Z.) Ltd, PO Box 64013, Botany Town Centre Auckland
New Zealand Tel: +64 (0)9 274 8788

Tee-Zed Products Ltd, PO Box 29227, Dunfermline, KY12 2DN
United Kingdom +44 (0)844 800 9445
info@tee-zed.co.uk

Made in Hangzhou, China.

©2015 Tee-Zed Products Pty Ltd



www.dreambaby.com.au
www.dreambaby.co.uk
www.dream-baby.co.nz

facebook.com/Dreambabysafety
youtube.com/user/Dreambabytv



INSTRUCTIONS:

Royale Converta® 3 in 1 Play-Pen Gate

•Play-Pen •Fireplace Guard •Wide Barrier Gate

IMPORTANT! KEEP FOR FUTURE REFERENCE.

Read INSTRUCTIONS thoroughly before assembling and installing gate.

Complies with Standards: EN 12227:2010.

WARNING

- Suitable for children up to 24 months.
- Ensure that the Play-Pen is fully erected and all the locking mechanisms engaged before placing your child in this Play-Pen.
- Do not place the Play-Pen close to an open fire or other heat source.
Ensure the Fireplace Guard is installed at least 60cm/23.5in from fire source.
- This product does not replace adult supervision. Never leave a child unattended.
- Never use with a child able to climb over or dislodge the Play-Pen/Fireplace Guard/Wide Barrier Gate.
- This play yard is not intended for sleep use.



WARNING: This package contains small parts and sharp points in an unassembled state. Keep out of reach of children. Adult assembly required.

COMPONENTS

- A GATE PANEL
B BARRIER PANEL
C UPPER SECURING HINGE
D SECURING SCREW
E LOWER HINGE
F VERTICAL BAR
G VERTICAL BAR TOP CASING
H GATE RELEASE SWITCH
I GATE UPPER LOCK
J GATE LOWER LOCK

WALL MOUNTING PARTS

- K UPPER MOUNT (Side X)
L UPPER MOUNT (Side Y)
M LOWER MOUNTS
N SCREWS (38mm / 1.5in)
O LOWER HINGE CAP
P FLOOR CAP

**REQUIRED FOR
ASSEMBLY/MOUNTING**

- Q ALLEN KEY (4mm)
NOTE: Store Allen Key safely out of reach of children. Keep for future use.

