

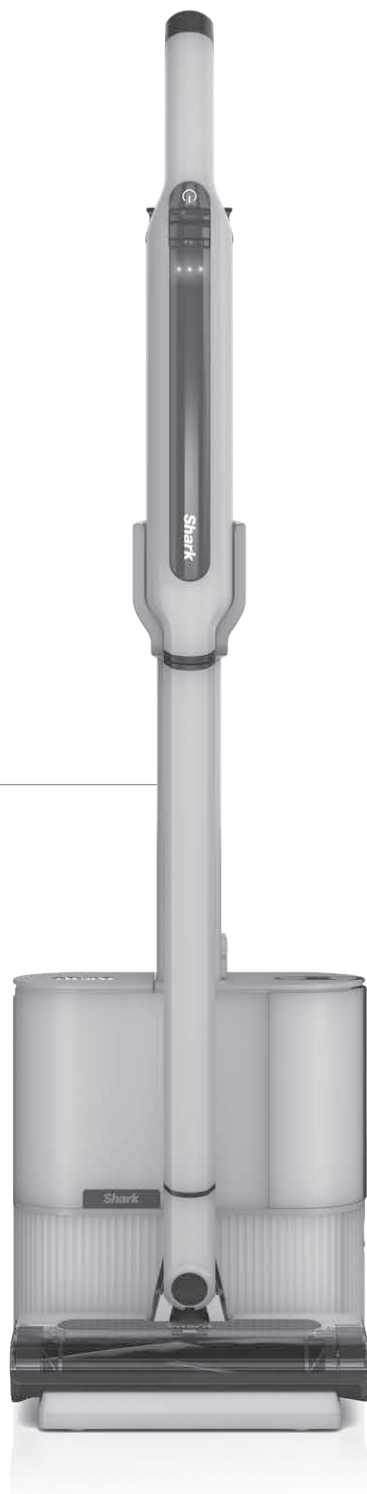
**Shark™** EVOPOWER™  
SYSTEM STD+

# Self-Empty Cordless Vacuum System 自動集塵無線吸塵器

CS150TWAE Series  
CS150TWAE 系列

## OWNER'S GUIDE 使用者指南

---



# IMPORTANT SAFETY INSTRUCTIONS

FOR HOUSEHOLD USE ONLY • PLEASE READ ALL INSTRUCTIONS BEFORE USING THIS VACUUM.

If the charging cord plug does not fit fully into the outlet, reverse the plug. If it still does not fit, contact a qualified electrician. **DO NOT** force into outlet or try to modify to fit.

To reduce the risk of shock and unintended operation, turn off power and remove both batteries before servicing.

## ⚠ WARNING

To reduce the risk of fire, electric shock, injury, or property damage:

### THE FLOOR NOZZLE, WAND, AND HANDHELD VACUUM CONTAIN ELECTRICAL CONNECTIONS:

1. This vacuum consists of a motorized nozzle, wand, and handheld vacuum. These components contain electrical connections, electrical wiring, and moving parts that potentially present risk to the user.
2. Before each use, carefully inspect all parts for any damage. If a part is damaged, discontinue use.
3. Use only identical replacement parts.
4. This vacuum contains no serviceable parts.
5. Use only as described in this manual. **DO NOT** use the vacuum for any purpose other than those described in this manual.
6. With the exception of the filters and dust cup, **DO NOT** expose any parts of the vacuum to water or other liquids.
7. Keep the appliance and its cord out of reach of children. **DO NOT** allow the appliance to be used by children. **DO NOT** allow to be used as a toy. Close supervision is necessary when used near children.

### GENERAL USE

8. This appliance can be used by persons with reduced physical, sensory or mental capabilities or lack of experience or knowledge if they have been given supervision or instruction concerning use of the appliance in a safe way and understand the hazards involved. Cleaning and user maintenance shall not be made by children.

9. Always turn off the vacuum before connecting or disconnecting any current carrying hoses, motorized nozzles, chargers, batteries, or other electrical or mechanical parts.
10. **DO NOT** handle plug or vacuum with wet hands.
11. **DO NOT** use without dust cup, filters, and brushroll in place.
12. Only use Shark™ branded filters and accessories.
13. **DO NOT** put any objects into nozzle or accessory openings. **DO NOT** use with any opening blocked; keep free of dust, lint, hair, and anything that may reduce airflow.
14. **DO NOT** use if nozzle or accessory airflow is restricted. If the air paths or the motorized floor nozzle become blocked, turn the vacuum off. Remove all obstructions before you turn on the unit again.
15. Keep nozzle and all vacuum openings away from hair, face, fingers, uncovered feet, or loose clothing.
16. **DO NOT** use if vacuum is not working as it should, or has been dropped, damaged, left outdoors, or dropped into water.
17. Use extra care when cleaning on stairs.
18. **DO NOT** leave the vacuum unattended while powered on.
19. When powered on, keep the vacuum moving over the carpet surface at all times to avoid damaging the carpet fibers.
20. **DO NOT** place vacuum on unstable surfaces such as chairs or tables.

21. **DO NOT** use to pick up:

- a) Liquids
- b) Large objects
- c) Hard or sharp objects (glass, nails, screws, or coins)
- d) Large quantities of dust (including drywall, fireplace ash, or embers). **DO NOT** use as an attachment to power tools for dust collection.
- e) Smoking or burning objects (hot coals, cigarette butts, or matches)
- f) Flammable or combustible materials (lighter fluid, gasoline, or kerosene)
- g) Toxic materials (chlorine bleach, ammonia, or drain cleaner)

22. **DO NOT** use in the following areas:

- a) Poorly lit areas
- b) Wet or damp surfaces
- c) Outdoor areas
- d) Spaces that are enclosed and may contain explosive or toxic fumes or vapors (lighter fluid, gasoline, kerosene, paint, paint thinners, mothproofing substances, or flammable dust)

23. Turn off the vacuum before plugging in or unplugging the charger.

24. Turn off the vacuum before any adjustment, cleaning, maintenance or troubleshooting.

25. During cleaning or routine maintenance, **DO NOT** cut anything other than hair, fibers, or string wrapped around the brushroll.

26. Allow all filters to air-dry completely before replacing in the vacuum to prevent liquid from being drawn into electric parts.

27. **DO NOT** modify or attempt to repair the vacuum or the battery yourself, except as indicated in this manual. **DO NOT** use the battery or vacuum if it has been modified or damaged. Damaged or modified batteries may exhibit unpredictable behavior resulting in fire, explosion or risk of injury.

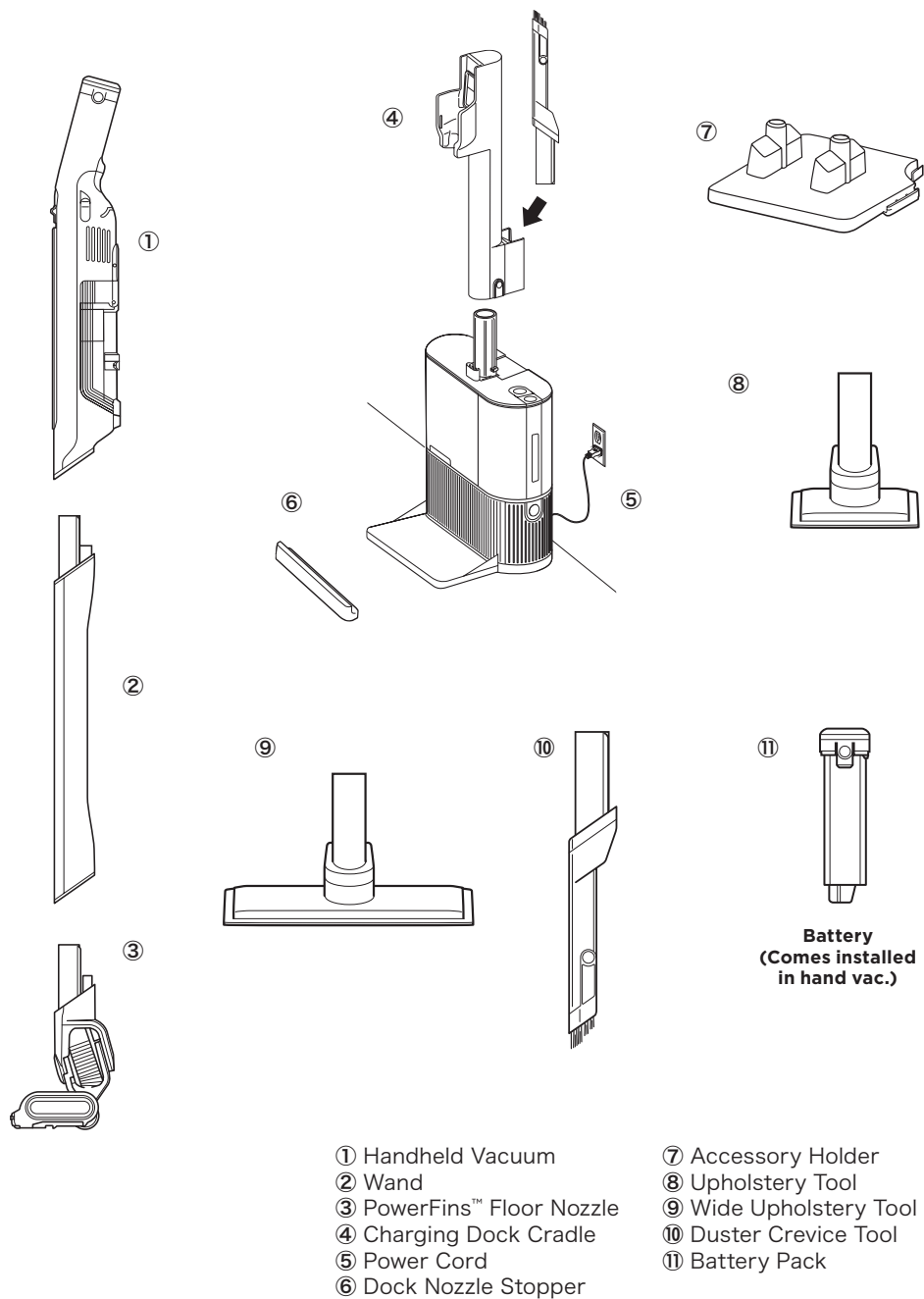
28. Turn off all controls before unplugging. If the supply cord is damaged, it must be replaced by the manufacturer, its service agent, or similarly qualified persons in order to avoid a hazard.

### BATTERY PACK

29. The battery is the power source for the vacuum. Carefully read and follow all charging instructions.
30. To prevent unintentional starting, ensure the vacuum is powered off before picking up or carrying the vacuum. **DO NOT** carry the appliance with your finger on the power switch.
31. Use only Shark™ charger dock XDCKCS150TWAE. Use of an incorrect charger may result in no charging and/or unsafe conditions.
32. Use only with Shark™ battery pack XSBT420EU (14.4V DC, 1900mAh). This vacuum includes one XSBT420EU (14.4V DC, 1900mAh) battery pack in the box.
33. Keep the battery away from all metal objects such as paper clips, coins, keys, nails, or screws. Shorting the battery terminals increases the risk of fire or burns.
34. Under abusive conditions, liquid may be ejected from the battery. Avoid contact with this liquid, as it may cause irritation or burns. If contact occurs, flush with water. If liquid contacts eyes, seek medical help.
35. Battery should not be stored at temperatures below 37.4°F (3°C) or above 104°F (40°C) to maintain long-term battery life.
36. **DO NOT** charge battery at temperatures below 40°F (5°C) or above 104°F (40°C).
37. Store the appliance indoors. **DO NOT** use or store it below 37.4°F (3°C). Ensure the appliance is at room temperature before operating.
38. **DO NOT** expose the battery to fire or temperatures above 265°F (130°C) as it may cause explosion.
39. During charging, the battery must be placed in a well-ventilated area.
40. **DO NOT** charge non-rechargeable batteries as it may cause explosion.

# SAVE THESE INSTRUCTIONS

## ASSEMBLY

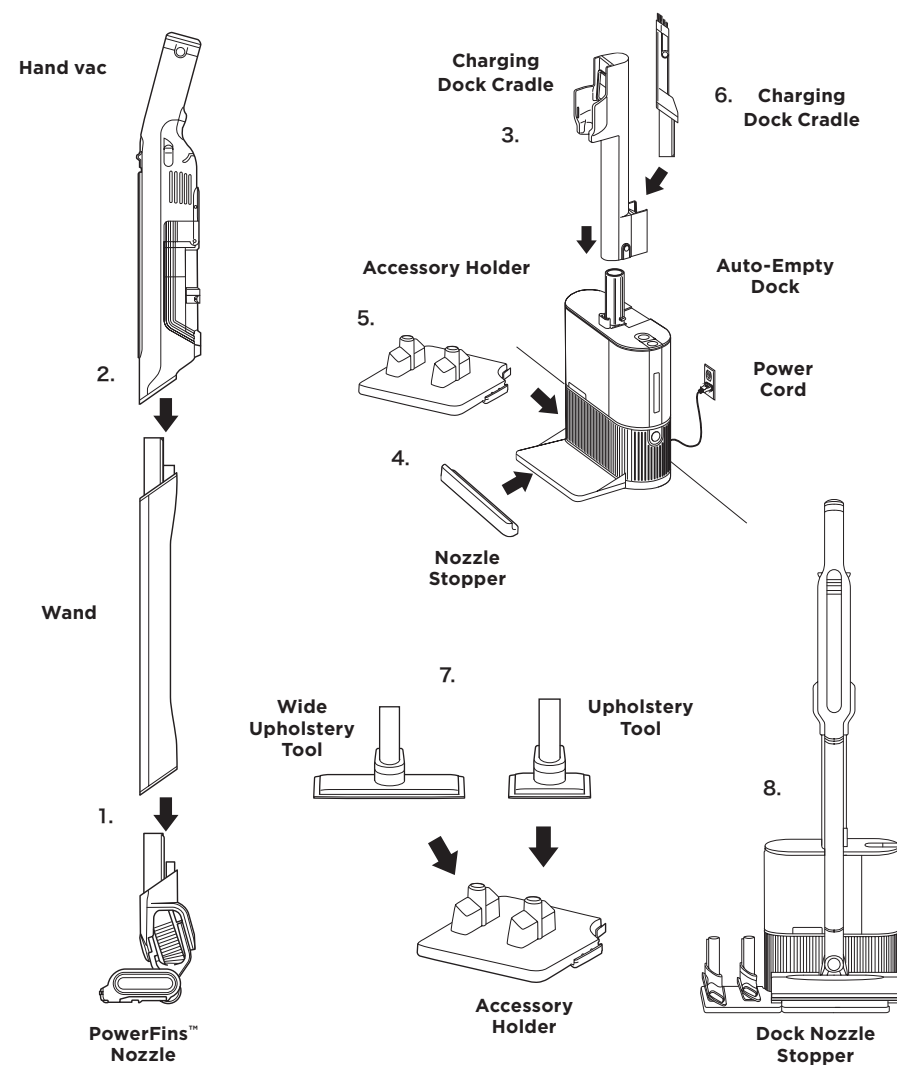


## ASSEMBLY

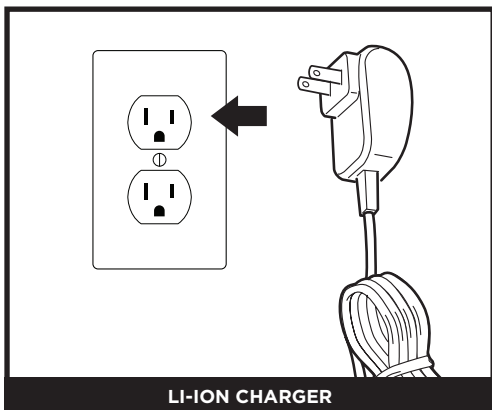
1. Slide the **Wand** onto the neck of the **PowerFins Floor Nozzle** until it clicks into place.
2. Align the **Hand Vacuum** nozzle opening with the top of the wand and slide it on until it clicks into place.
3. Make sure the **Auto-Empty Dock** is facing forward. Slide the **Charging Dock Cradle** over the Auto-Empty Dock post on the top of the dock until it clicks.
4. Insert dock nozzle stopper underneath the front dock plate.

5. Place accessory holder to left side of dock.
6. Place the duster crevice tool into the rear slot on the Charging Dock Cradle.
7. Place accessories on accessory holder.
8. Place the assembled vacuum on the dock. The indicator light on the vacuum will illuminate and the vacuum will automatically empty debris into the dock.

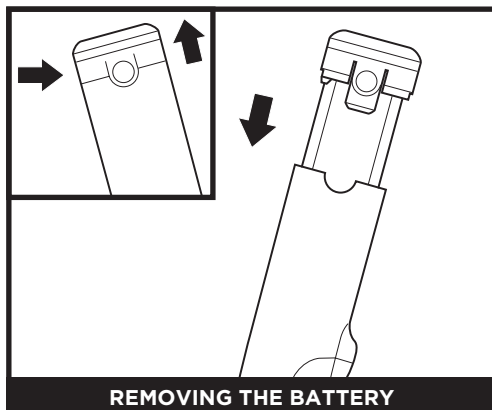
For proper operation, ensure all components are completely connected and clicked into place.



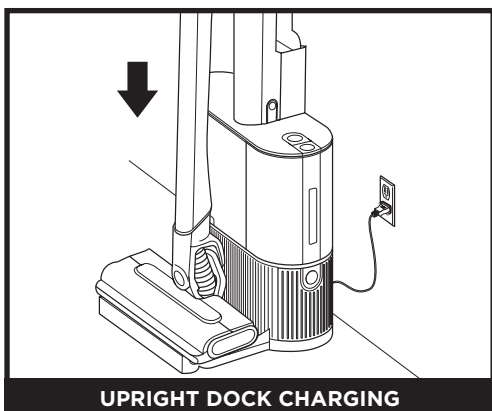
## CHARGING THE BATTERY



Plug the dock's power cord into a wall outlet.



To remove the battery from the hand vacuum, press the release tabs on the battery cap and slide out the battery. To reinstall, slide the battery into the compartment in the handle until it clicks into place.



When the vacuum cleaner body is correctly placed on the auto-empty dock, the battery indicator lights on the main unit will flash to indicate that charging has started. When charging is complete, all three indicator lights will be on.

### OPTION 1 - UPRIGHT CHARGING DOCK

Charge the assembled vacuum by placing it on the dock. Make sure the contacts on the wand are aligned with the contacts on the charging post. When charging is complete and you need to use the unit again, lift it off the dock.

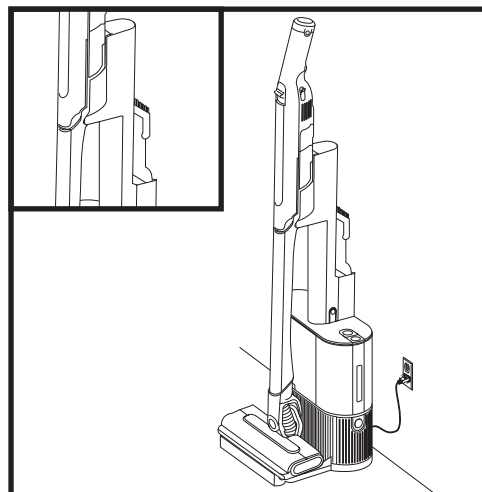
### OPTION 2-- CHARGE ONE BATTERY IN THE DOCK WHILE USING THE OTHER

You can swap the batteries to charge one while using the other. Remove the fully charged battery from the slot in the dock and insert it into the hand vac. Insert the other battery into the charging slot. The indicator light will illuminate when charging begins and will turn off a few minutes after the battery is fully charged.

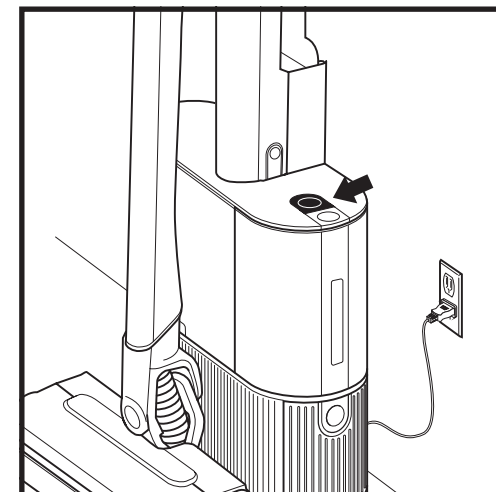
**NOTE:** When the unit is docked properly, the charging lights on the hand vacuum will blink, indicating that charging has begun. When charging is complete, all three indicator lights will remain on for 5 minutes, then shut off.

**NOTE:** The main unit comes with a partial charge. For maximum runtime, charge fully before first use (approximately 3.5 hours). Leaving the unit plugged in will not damage battery life.

## USING THE DOCK



In its default mode, the dust cup evacuation will happen automatically every time the vacuum is placed onto the dock.



If you would like to turn the evacuation feature off, press the mute button on the top side on the top of the dock. While the mute icon is illuminated, the automatic empty feature will be disabled and the dock will only charge the unit. To turn the automatic empty feature back on, simply press the mute button again.

### OPTION 1 - UPRIGHT CHARGING DOCK

Charge the assembled vacuum by placing it on the dock. Make sure the contacts on the wand are aligned with the contacts on the charging post. When charging is complete and you need to use the unit again, lift it off the dock.

### OPTION 2-- CHARGE ONE BATTERY IN THE DOCK WHILE USING THE OTHER

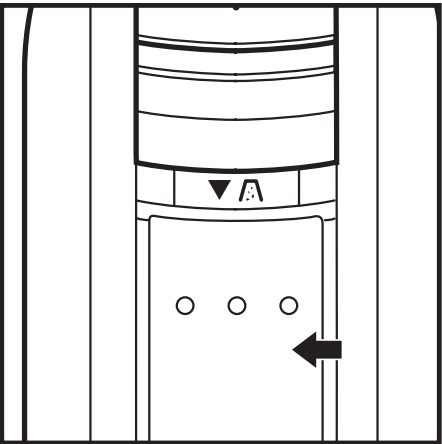
You can swap the batteries to charge one while using the other. Remove the fully charged battery from the slot in the dock and insert it into the hand vac. Insert the other battery into the charging slot. The indicator light will illuminate when charging begins and will turn off a few minutes after the battery is fully charged.

**NOTE:** Do not remove the vacuum while the evacuation cycle is taking place.

## LI-ION BATTERIES

The Lithium-Ion Power Pack batteries do not come fully charged. Prior to first use, charge completely. During first use, run each battery down until it is completely out of power. This will condition the battery.

### INDICATOR LIGHTS SHOW CHARGING STATUS AND BATTERY LEVEL



#### Charging Status

- |            |            |                |             |
|------------|------------|----------------|-------------|
|            |            |                |             |
| Low Charge | Mid Charge | Nearly Charged | Full Charge |

**NOTE:** Full charge takes approximately 3.5 hours per battery. LEDs will shut off 5 minutes after achieving full charge.

#### In Use

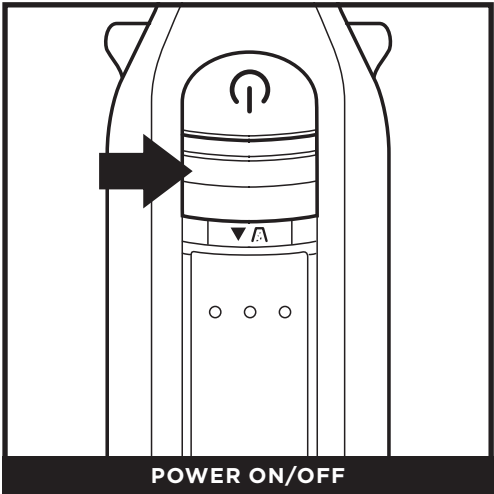
- |             |            |            |              |
|-------------|------------|------------|--------------|
|             |            |            |              |
| Full Charge | Mid Charge | Low Charge | Nearly Empty |

### RECYCLING THE LI-ION BATTERIES

When the Shark™ Li-ion batteries need to be replaced, dispose of them or recycle them in accordance with local ordinances or regulations. In some areas, it is illegal to place spent lithium-ion batteries in the trash or in a municipal solid waste stream. Return spent batteries to an authorized recycling center or to the retailer for recycling. Contact your local recycling center for information on where to drop off spent batteries.

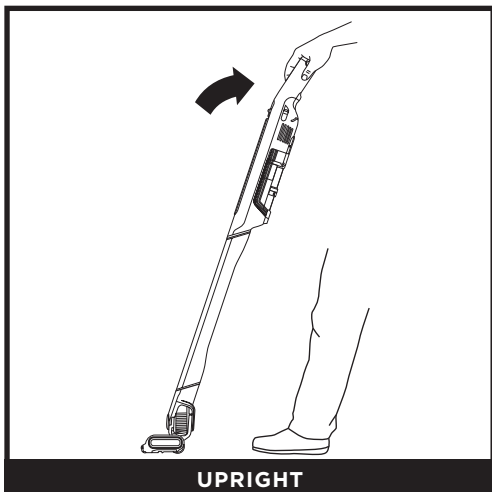
**NOTE:** The Shark™ battery, like all lithium-ion batteries, will naturally decrease in capacity over time from the 100% capacity of a new battery.

## CONTROLS

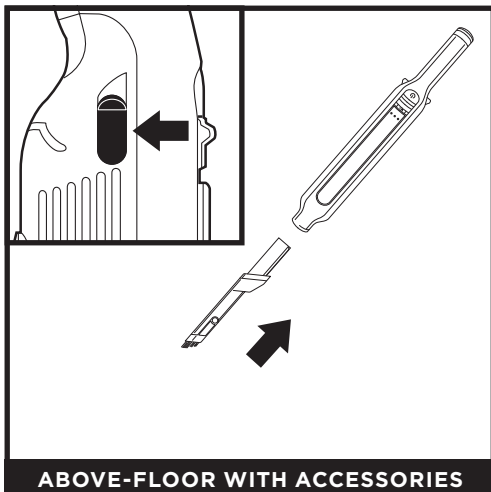


Press the **On/Off** button on the handle to turn on power. To turn off power, press the button again.

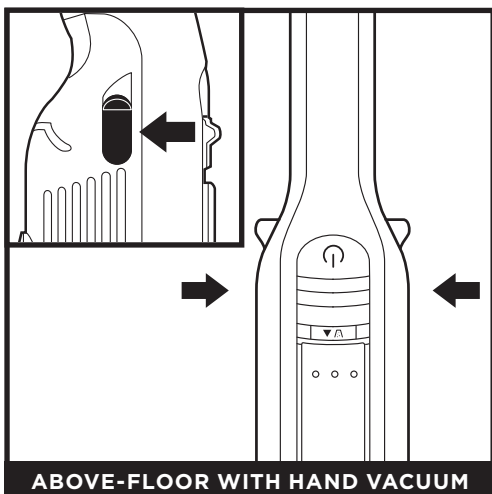
## CLEANING MODES



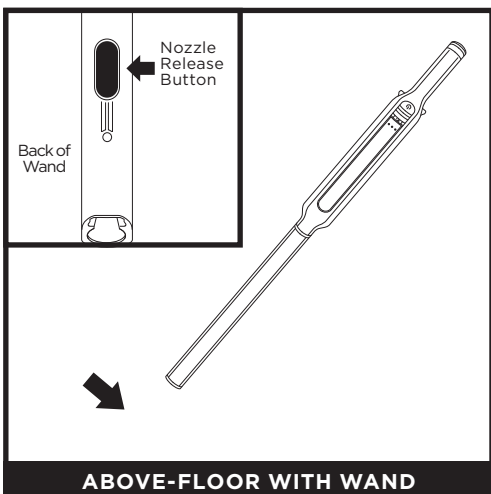
Use the PowerFins™ floor nozzle for powerful cleaning on both bare floors and carpets. The brushroll is activated when the hand vacuum is connected and powered on.



Attach an accessory for great cleaning on stairs, furniture, and other above-floor areas. To attach an accessory, slide it into the opening in the nozzle. To remove, slide the release buttons on both sides of the handle and slide out the accessory.

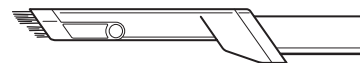


Detach the hand vacuum to clean above-floor areas. To detach, slide the release buttons on both sides of the handle, and lift the hand vacuum off the wand.



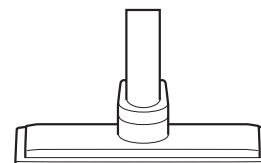
Stand the vacuum upright and press the nozzle release button located at the bottom of the wand, above the nozzle. Lift wand to detach. Great for cleaning baseboards, ceiling fans, window sills, and other hard-to-access areas. To reattach the wand, align it over the neck of the floor nozzle, then slide it on until it clicks into place.

## INCLUDED ACCESSORIES



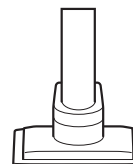
### Duster Crevice Tool

Two cleaning tools in one. The crevice tool gives you extended reach to clean in tight spaces, while the soft brush is ideal for dusting delicate surfaces.



### Wide Upholstery Tool

Wide surface area helps remove pet hair and large debris from mattresses, couches, curtains, and other delicate fabrics such as lampshades.



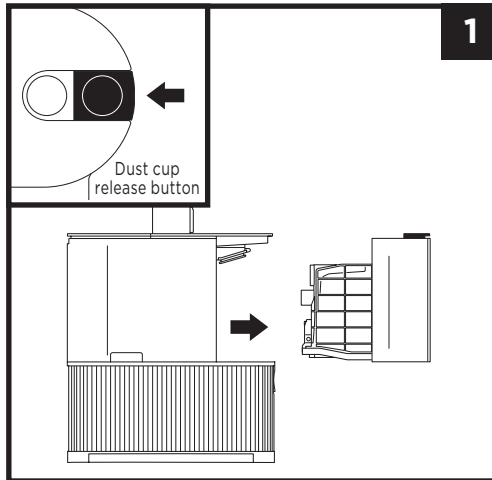
### Upholstery Tool

Picks up pet hair, dust, and large debris from mattresses, couches, curtains, and other delicate upholstered fabrics.

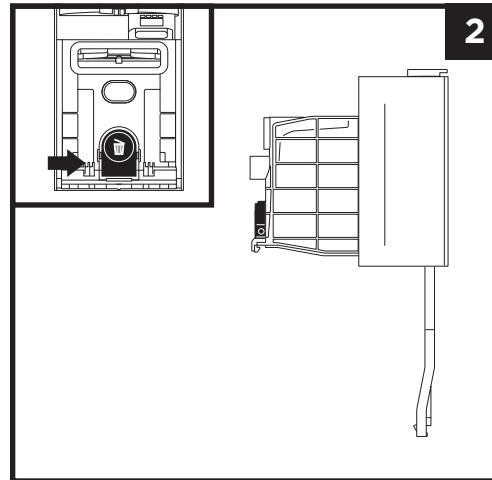
**NOTE:** All accessories are compatible with both the wand and the handheld vacuum.

## MAINTAINING YOUR VACUUM

### EMPTYING THE DOCK DUST BIN



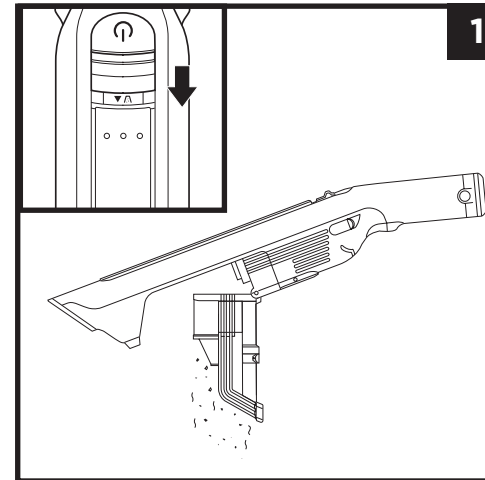
The dock dust bin holds up to 30 days' worth of dust and debris. Empty the dock dust bin when the debris level approaches the Max Fill line. To detach the bin, press the Dust Bin Release button on the top right side of the dock, then slide out the bin.



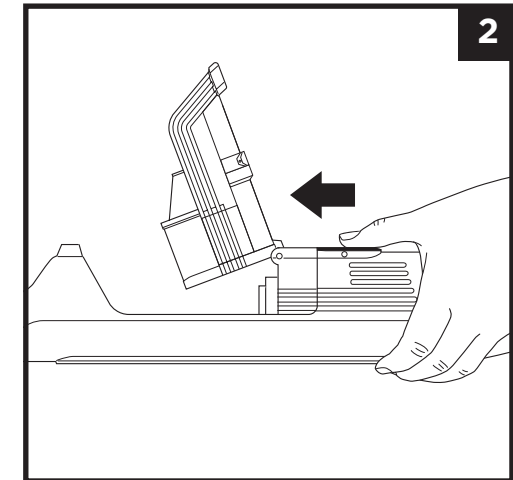
To empty the bin, insert it at least 3 inches deep into a trash receptacle, then press the release button with the trash can icon. The bin lid will drop open, releasing the debris. Lightly tap the bin against the inside of the trash receptacle to knock off any remaining debris. Reinstall the bin by sliding it into the slot in the dock until it clicks into place.

## MAINTAINING YOUR VACUUM

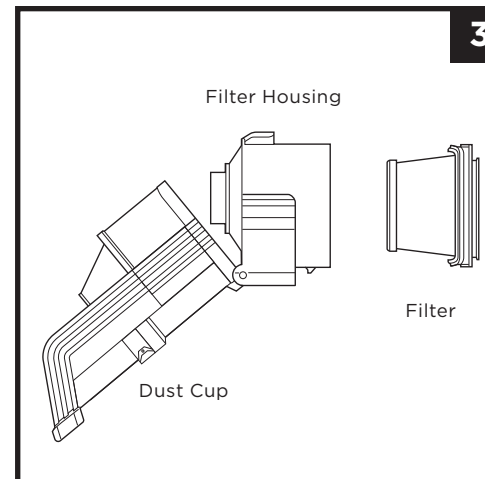
### CLEANING THE DUST CUP AND FILTER



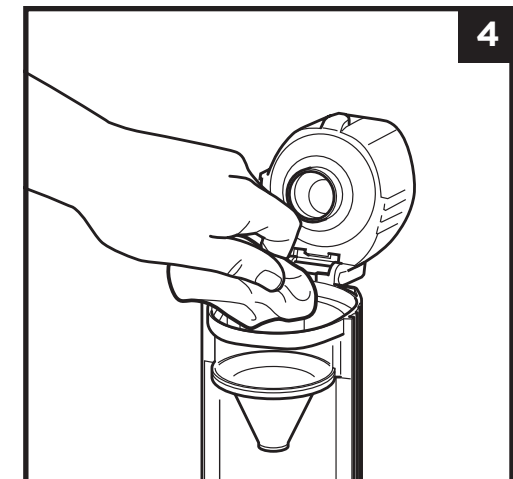
1. With the power off, hold the dust cup over a trash receptacle. Slide the release button back, and the dust cup will swing open. Tap the filter screen lightly to knock off dust and debris.



2. With the dust cup open and the power off, press the filter release latch on the bottom of the handle and pull out the filter housing.



3. Press the tabs on both sides of the filter housing and pull out the filter. To clean the filter, handwash only with water and let air-dry for at least 24 hours before reinstalling. To reinstall the filter, slide it back into the housing, then slide the housing back into place.



4. To deep-clean the dust cup, open the dust cup 90 degrees until it clicks open. Wipe clean with cloth. Rinse the dust cup with water, and wipe clean with a damp cloth. Allow to air-dry completely (at least 24 hours). When the dust cup is completely dry, reinstall it.

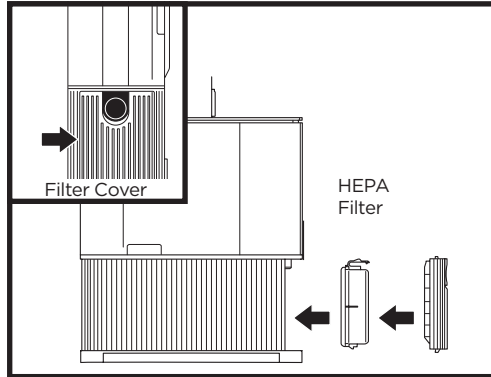
**NOTE:** Do not wash any parts or accessories in a dishwasher.



## MAINTAINING YOUR VACUUM

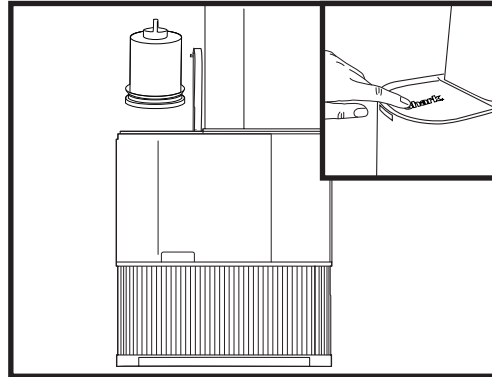
### CLEANING THE DOCK FILTERS

Please clean the filters once a month.



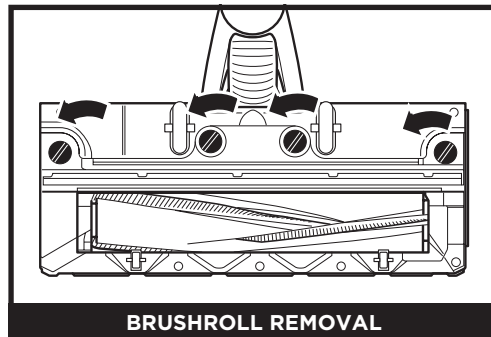
To access the post-motor filter, press the button at the top of the filter door, then tilt the door away from the dock and lift. Remove the post-motor filter from the base. To reinstall the post-motor filter, insert it into the dock and replace the filter door.

For best results, clean the dock filters at least once a month and replace them regularly. To clean filters, rinse with cold water **ONLY** to prevent damage from cleaning chemicals. Allow all filters to air-dry for at least 24 hours before reinstalling them to prevent liquid from being drawn into electrical parts. Maintaining the foam filter will ensure successful Auto-Empty evacuation.



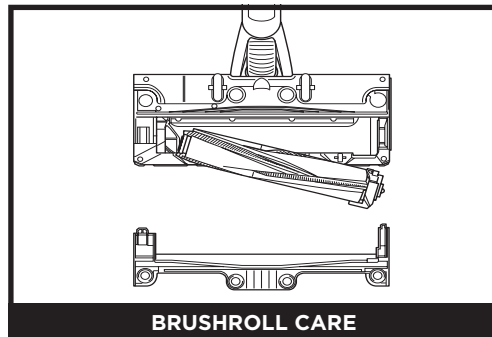
To access the pre-motor filter in the dock, lift the cover on the top left side of the dock. Lift out the foam filter by the handle, then remove the felt filter underneath. Tap the filters over the trash, then rinse with cold water. Allow the filters to air-dry for 24 hours before reinstalling.

### NOZZLE MAINTENANCE



#### BRUSHROLL REMOVAL

1. Turn off the vacuum.
2. Press the nozzle release button to detach the nozzle from the wand.
3. Using a coin, turn the 3 locks counterclockwise to open, then lift off the cover and tilt back the neck of the nozzle.



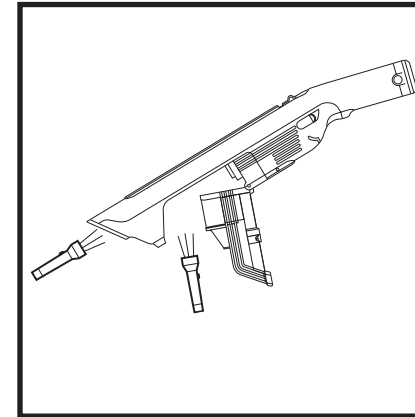
#### BRUSHROLL CARE

4. Clear any blockages and remove any debris from the brushroll and floor nozzle.
5. Tap off loose debris, then wipe the brushroll clean with a dry towel. Handwash the brushroll when needed, using only water, and let it air-dry completely for at least 24 hours.
6. When the brushroll is dry, reinstall it in the nozzle by inserting one end first, then the other, until it clicks into place.

## MAINTAINING YOUR VACUUM

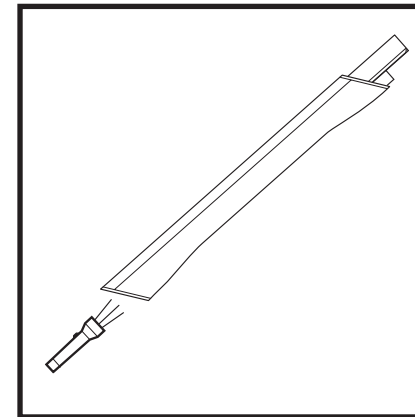
### CHECKING FOR BLOCKAGES

If you run over a hard or sharp object or notice a noise change while vacuuming, check for blockages or objects caught in the brushroll.



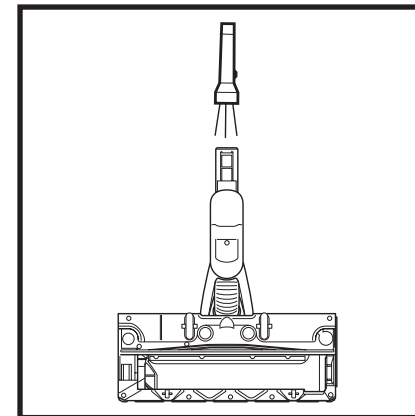
#### Checking for Blockages in the Hand Vacuum:

1. Turn off the vacuum.
2. Remove the hand vacuum from the wand.
3. Check all intake openings to the dust cup and remove any debris or blockages.



#### Checking for Blockages in the Wand:

1. Turn off the vacuum.
2. Detach the hand vacuum and floor nozzle from the wand.
3. Check both ends of the wand for blockages and debris.
4. Clear away any debris or blockages.



#### Checking for Blockages in the Floor Nozzle:

1. Turn off the vacuum.
2. Detach the wand.
3. Using a coin, turn the 3 locks on the bottom of the nozzle counterclockwise to open.
4. Lift off the nozzle cover and tilt back the neck of the nozzle.
5. Check the opening and remove any debris.
6. Replace the cover by sliding the tabs into the slots. Press down firmly on all sides. Turn the locks clockwise to close.



## MAINTAINING YOUR VACUUM

### TROUBLESHOOTING

**⚠ WARNING: To reduce the risk of shock and unintended operation, turn off power and remove the battery before servicing.**

**Vacuum is not picking up debris. No suction or light suction. Top indicator light on hand vacuum is solid yellow (Fig. 1).**

**Refer to Checking for Blockages and Maintaining your Vacuum sections for more information.**

1. Dust cup may be full; empty dust cup.
2. Check floor nozzle for blockages; clear blockages if required.
3. Remove any string, carpet fibers, or hair that may be wrapped around the brushroll.
4. Check connection between hand vacuum and wand for blockages; clear blockages if required.
5. Check filters to see if they need cleaning. Follow instructions for rinsing and completely air-drying the filters before reinstalling them.

**Vacuum lifts area rugs.**

1. Make sure you are not engaging Boost mode. Take care when vacuuming area rugs or rugs with delicately sewn edges.
2. Turn off the unit to disengage from the carpet, then restart.

**My vacuum has a PowerFins™ nozzle but the brushroll doesn't spin. (Fig. 2)**

1. Check the LED battery indicator lights on the hand vacuum. If the middle LED is flashing, then there is an overspeed error. Contact Customer Service at 0800-000-605 or [sharkninja.tw](https://sharkninja.tw).
2. Immediately turn off the vacuum. Remove any blockages before turning the vacuum back on. Make sure the hand vacuum is tilted back far enough for the brushroll to engage while in use.
3. If the floor nozzle has headlights and they are not illuminated, there is a connection issue between hand vacuum, wand, and nozzle. Try detaching the parts, then reconnecting them.

**Vacuum turns off on its own.**

There are several possible reasons for the vacuum turning off on its own, including blockages, battery issues, and overheating. If vacuum turns off on its own, perform the following steps:

1. Turn on the vacuum and check the battery indicator lights on the hand vacuum. If recharging is needed, make sure vacuum power is off before plugging in the charger.
2. Check for the overspeed or motor overheating indicator lights. Empty dust cup and clean filters (See the Cleaning the Dust Cup and Filter section). Empty dust cup and clean filters (See the Cleaning the Dust Cup and Filter section).
3. Check for overspeed or motor overheating indicator lights. Check wand, accessories, and inlet openings and remove any blockages. Check wand, accessories, and inlet openings and remove any blockages.
4. Allow unit and battery to cool for at least 45 minutes, until they return to room temperature.
5. Press the On/Off switch to restart the vacuum.

**NOTE:** If vacuum still does not operate properly, contact Customer Service at **0800-000-605** or [sharkninja.tw](https://sharkninja.tw).

**The indicator light on the vacuum cleaner is flashing.**

- Right indicator light is flashing (Figure A): Please charge the battery.
- Central indicator light illuminates yellow (Figure B): Blocked nozzle, etc. (Please refer to P.15 "Checking for blockages")
- Center indicator light is flashing yellow (Figure C): There is a problem with the nozzle or other electrical system. Please contact customer support.



Fig. A



Fig. B



Fig. C

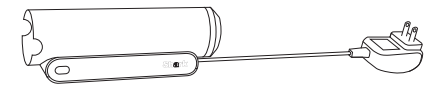
## ADDITIONAL ACCESSORIES AVAILABLE ON SHARKNINJA.TW

- A** Duster Crevice Tool
- B** Replacement Battery
- C** Upholstery Tool
- D** Wide Upholstery Tool
- E** Filter (hand vac)
- F** Battery Charging Sleeve
- G** Pre-Motor Foam Filter
- H** Pre-Motor Felt Filter
- I** HEPA Filter

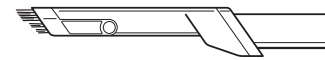
E



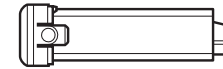
F



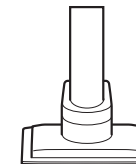
A



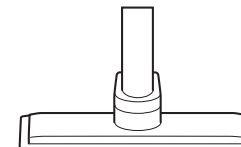
B



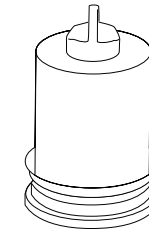
C



D



G



H



I



**NOTE:** Not all accessories come with all units. To order additional accessories, visit [sharkninja.tw](https://sharkninja.tw)

## ONE (1) YEAR LIMITED WARRANTY

The One (1) Year Limited Warranty applies to purchases made from authorized retailers of **OSONOVA PRIVATE LIMITED TAIWAN BRANCH**. Warranty coverage applies to the original owner and to the original product only and is not transferable.

SharkNinja warrants that the unit shall be free from defects in material and workmanship for a period of one (1) year from the date of purchase when it is used under normal household conditions and maintained according to the requirements outlined in the Owner's Guide, subject to the following conditions and exclusions:

What is covered by this warranty?

1. The original unit and/or non-wearable components deemed defective, in SharkNinja's sole discretion, will be repaired or replaced up to one (1) year from the original purchase date.
2. In the event a replacement unit is issued, the warranty coverage ends six (6) months following the receipt date of the replacement unit or the remainder of the existing warranty, whichever is later. SharkNinja reserves the right to replace the unit with one of equal or greater value.

What is not covered by this warranty?

1. Normal wear and tear of wearable parts (such as foam filters, HEPA filters, pads, etc.), which require regular maintenance and/or replacement to ensure the proper functioning of your unit, are not covered by this warranty. Replacement parts are available for purchase at **sharkninja.tw**.
2. Any unit that has been tampered with or used for commercial purposes.
3. Damage caused by misuse (e.g., vacuuming up water or other liquids), abuse, negligent handling, failure to perform required maintenance (e.g., not cleaning the filters or not removing debris from the brushroll), or damage due to mishandling in transit.
4. Consequential and incidental damages.
5. Defects caused by repair persons not authorized by SharkNinja. These defects include damages caused in the process of shipping, altering, or repairing the SharkNinja product (or any of its parts) when the repair is performed by a repair person not authorized by SharkNinja.

How to get service

If your appliance fails to operate properly while in use under normal household conditions within the warranty period, visit **sharkninja.tw** for product care and maintenance self-help. We also ask that you register your product online at **sharkninja.tw** and have the product on hand when you call, so we may better assist you.

How to initiate a warranty claim

You must visit **sharkninja.tw** to initiate a warranty claim. In order to better assist you please register your product prior to calling and have your product with you at the time of your call. You will need the receipt as proof of purchase. A Customer Service Specialist will provide you with return and packing instruction information. We also ask that you register your product online at **sharkninja.tw** and have the product on hand when you call, so we may better assist you.

## ONE (1) YEAR LIMITED BATTERY WARRANTY

The One (1) Year VIP Limited Warranty applies to purchases made from authorized retailers of **OSONOVA PRIVATE LIMITED TAIWAN BRANCH**. Warranty coverage applies to the original owner and to the original product only and is not transferable.

SharkNinja warrants that the battery shall be free from defects in material and workmanship for a period of one (1) year from the date of purchase when it is used under normal household conditions and maintained according to the requirements outlined in the Owner's Guide, subject to the following conditions and exclusions:

What is covered by this warranty?

1. The original battery deemed defective, in SharkNinja's sole discretion, will be replaced up to one (1) years from the original purchase date.
2. In the event a replacement battery is issued, the warranty coverage ends six (6) months following the receipt date of the replacement battery or the remainder of the existing warranty, whichever is later. SharkNinja reserves the right to replace the unit with one of equal or greater value.

What is not covered by this warranty?

1. Normal wear and tear of the battery, which requires optimal temperature storage and operation to ensure its proper functioning. Replacement batteries are available for purchase at **sharkninja.tw**.
2. A battery that has been tampered with or used for commercial purposes.
3. Damage caused by misuse (e.g., exposing battery to liquids or extreme hot and/or cold temperatures), abuse, negligent handling, failure to perform required maintenance, or damage due to mishandling in transit.
4. Consequential and incidental damages.
5. Defects caused by repair persons not authorized by SharkNinja. These defects include damages caused in the process of shipping, altering, or repairing the SharkNinja product (or any of its parts) when the repair is performed by a repair person not authorized by SharkNinja.

How to get service

If your battery fails to operate properly while in use under normal household conditions within the warranty period, visit **sharkninja.tw** for product care and maintenance self-help. So we may better assist you, please register your product online at **sharkninja.tw** and have the product on hand when you call.

How to initiate a warranty claim

You must visit **sharkninja.tw** to initiate a warranty claim. You will need the receipt as proof of purchase. We also ask that you register your product online at **sharkninja.tw** and have the product on hand when you call, so we may better assist you. A Customer Service Specialist will provide you with return and packing instruction information when you call.

# 重要安全說明

僅限家庭使用。使用本吸塵器前請先閱讀所有說明。

如果充電線插頭無法完全插入插座，請翻轉插頭再試一次。  
若仍無法插入，請聯絡合格的電工。請勿強行插入插座或試圖改裝插頭以插入插座。

為了降低觸電及意外運作的風險，維修前請先關閉電源並取出兩顆電池。

## 警告

為了降低火災、觸電、受傷或財產損失的風險，請注意以下事項：

地板吸頭、延長管及內含電力連接的手持吸塵器：

- 1. 本吸塵器由電動吸頭、延長管及手持吸塵器組成。這些元件包含電力連接、電線及活動零件，可能對使用者造成風險。
- 2. 每次使用前，請仔細檢查所有零件是否有任何損壞。若發現有零件受損，請停止使用。
- 3. 僅使用相同規格的替換零件。
- 4. 本吸塵器不含可自行維修的零件。
- 5. 僅按照本手冊中的說明使用本產品。**請勿**將本吸塵器用於本手冊未提及的用途。
- 6. 除了濾網與集塵桶外，**請勿**將吸塵器的任何零件浸入水中或其他液體中。
- 7. 請將本設備及其電線放在兒童無法觸及的地方。**請勿**讓兒童使用本設備。**請勿**將本設備作為玩具使用。在兒童附近使用時需嚴密監督。

一般使用

- 8. 身心感官能力受限或缺乏相關經驗或知識者，可在獲得適當監督或指導，並瞭解相關風險後，使用本設備。兒童不得清潔或維護本產品。

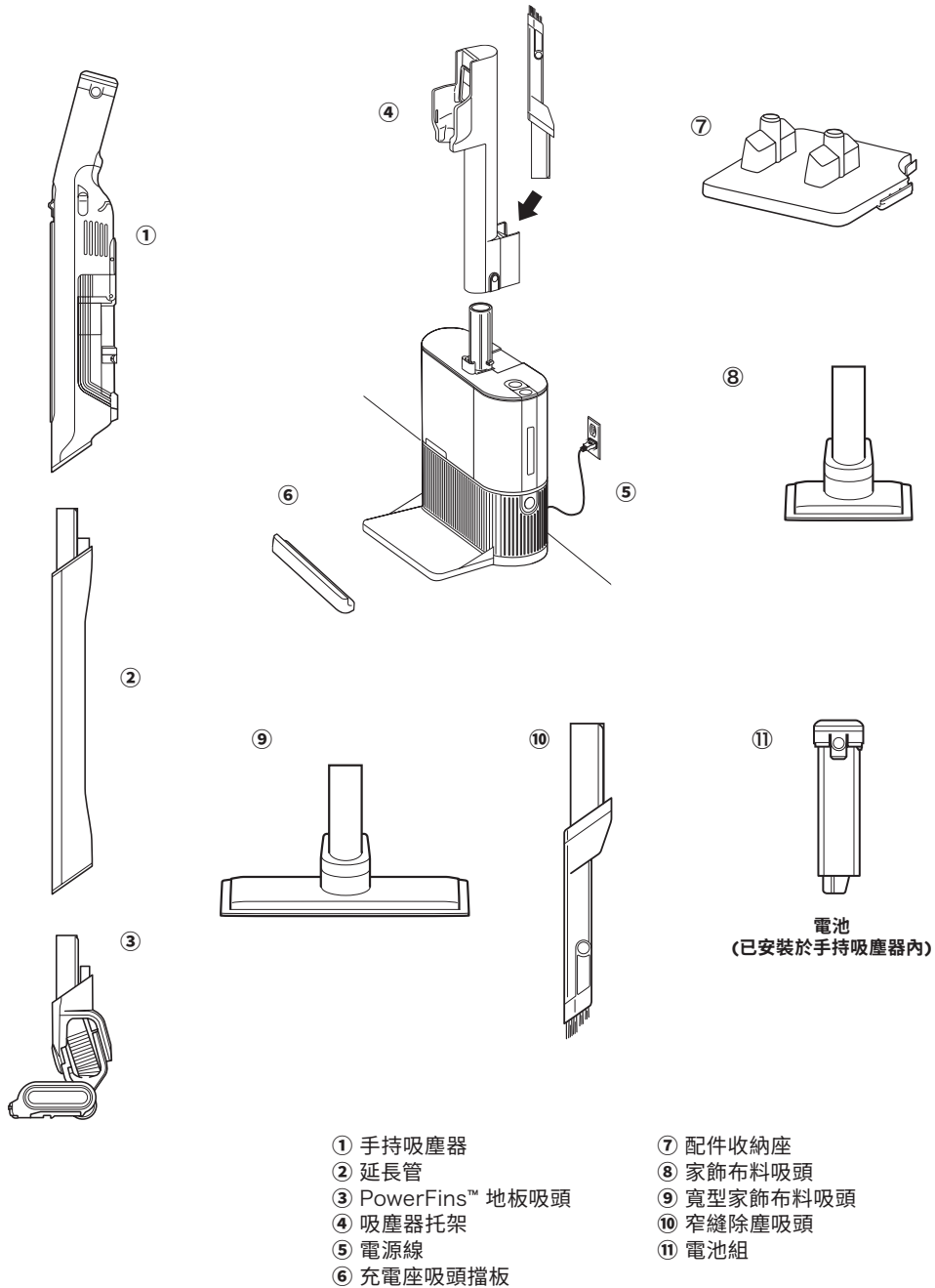
- 9. 在連接或斷開電源線、電動吸頭、充電器、電池或其他電力或機械零件前，請務必關閉吸塵器電源。
- 10. **請勿**用潮濕的手接觸插頭或吸塵器。
- 11. **請勿**在未安裝集塵桶、濾網及毛刷滾輪的情況下使用吸塵器。
- 12. 僅使用 Shark™ 品牌的濾網及配件。
- 13. **請勿**將任何異物放入吸頭或配件開口。請勿在任何開口被堵塞的情況下使用，應保持開口無灰塵、棉絮、頭髮及其他可能阻礙氣流的物質。
- 14. **請勿**在吸頭或配件氣流受阻的情況下使用。若氣流路徑或電動地板吸頭阻塞，請關閉吸塵器電源，並清除所有堵塞物後再重新啟動。
- 15. 請將吸頭及所有吸塵口遠離頭髮、臉部、手指、赤腳或寬鬆衣物。
- 16. **請勿**在吸塵器無法正常運作、摔落、受損、長期放置戶外或掉入水中後繼續使用。
- 17. 清理樓梯時請特別小心。
- 18. 電源開啟時，**請勿**讓吸塵器處於無人看管的狀態。
- 19. 電源開啟時，請隨時保持吸塵器在地毯表面移動，以避免損壞地毯纖維。
- 20. **請勿**將吸塵器放置在不自穩固的表面（如椅子或桌子）上。

- 21. **請勿**用於吸取以下物質：
    - a) 液體
    - b) 大型物件
    - c) 堅硬或尖銳物品（如玻璃、釘子、螺絲或硬幣）
    - d) 大量粉塵（包括石膏粉、壁爐灰燼或餘燼）。請勿將本產品用作電動吸頭的集塵附件。
    - e) 燃燒或冒煙物件（如熱煤炭、菸蒂或火柴）
    - f) 易燃或可燃物質（如打火機油、汽油或煤油）
    - g) 有毒物質（如含氯漂白劑、氨水或排水管清潔劑）
  - 22. **請勿**在下列區域中使用：
    - a) 光線不足的區域
    - b) 潮濕或積水的表面
    - c) 戶外區域
    - d) 封閉空間中，可能存在爆炸性或有毒氣體、蒸氣的場所（如打火機油、汽油、煤油、油漆、稀釋劑、防蛀劑或易燃粉塵）
  - 23. 插拔充電器前請先關閉吸塵器。
  - 24. 在進行調整、清潔、維護或故障排除前，請先關閉吸塵器。
  - 25. 在清潔或例行維護期間，僅可剪除纏繞在毛刷滾輪上的頭髮、纖維或線材，**請勿**剪除其他物品。
  - 26. 務必待濾網完全晾乾後再裝回吸塵器內，以防止液體進入電力零件。
  - 27. **請勿**自行改裝或嘗試修理吸塵器或電池，除非本手冊另有說明。**請勿**使用已被改裝或損壞的電池或吸塵器。損壞或改裝過的電池可能會出現無法預測的行為，導致火災、爆炸或受傷的風險。
  - 28. 拔除插頭前請先關閉所有控制開關。若電源線損壞，必須由製造商、其維修專員或具備相應資格的人員更換，以避免危險。
- 電池組**
- 29. 電池是吸塵器的電源。請仔細閱讀並遵循所有充電說明。
  - 30. 為防止意外啟動，在搬運或提起吸塵器前，請確保已關閉吸塵器電源。**請勿**在手指置於電源開關的情況下搬運本設備。

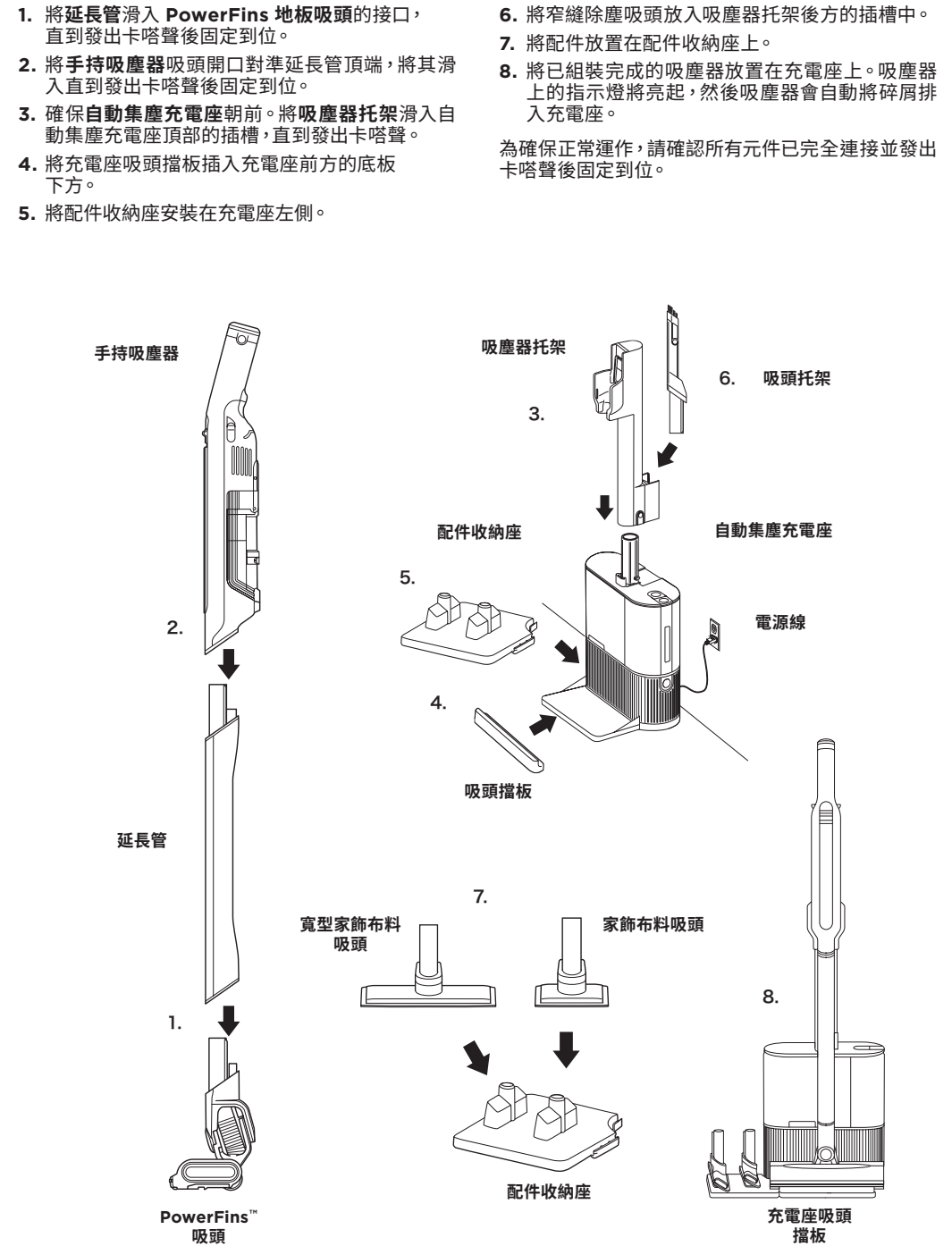
- 31. 只可使用 Shark™ 充電座 XDCKCS150TWAE。使用不正確的充電器可能導致無法充電及/或出現不安全狀況。
- 32. 請僅搭配 Shark™ 電池組 XSBT420EU (14.4V DC，1900mAh) 使用。本吸塵器的包裝內附一顆 XSBT420EU (14.4V DC，1900mAh) 電池組。
- 33. 請將電池遠離所有金屬物件，如迴紋針、硬幣、鑰匙、釘子或螺絲。電池端子短路會增加火災或燒傷風險。
- 34. 在不當使用的狀況下，電池可能會釋出液體。請避免接觸此液體，因其可能引起皮膚刺激或灼傷。若不慎接觸，請立即以清水沖洗。若液體接觸到眼睛，請立即尋求醫療協助。
- 35. 為維持長久的電池壽命，請勿將電池存放於低於 3°C (37.4°F) 或高於 40°C (104°F) 的環境中。
- 36. **請勿**在低於 5°C (40°F) 或高於 40°C (104°F) 的溫度下為電池充電。
- 37. 請將本設備存放於室內。請勿在低於 3°C (37.4°F) 的環境中使用或存放本產品。操作前，請確保本設備處於室溫狀態。
- 38. **請勿**將電池暴露於火源或超過 130°C (265°F) 的高溫環境，以免造成爆炸。
- 39. 充電時，請將電池置於通風良好的區域。
- 40. **請勿**為不可充電的電池充電，以免造成爆炸。

## 請妥善保存此說明

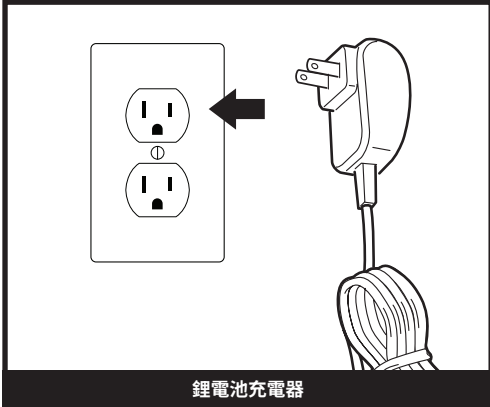
## 組件



## 組件

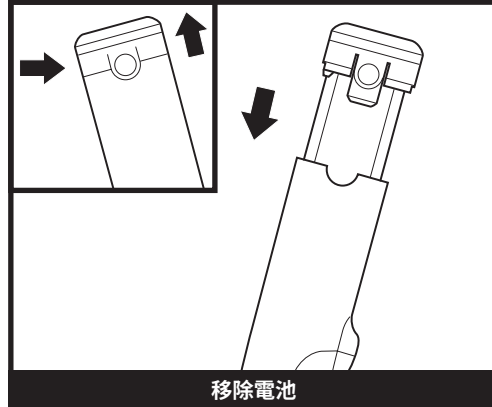


## 為電池充電



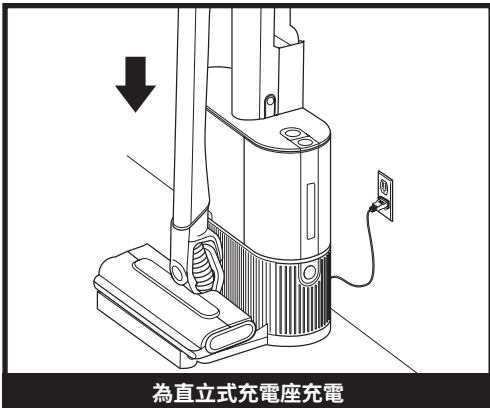
鋰電池充電器

將充電座的電源線插入牆壁插座。



移除電池

若要從手持吸塵器中移除電池，請按下電池蓋上的釋放卡扣，並將電池滑出。重新安裝時，將電池滑入手柄的電池槽中，直到發出卡嗒聲後固定到位。



為直立式充電座充電

當吸塵器本體正確放置於自動集塵充電座時，主裝置上的電池指示燈會閃爍，表示已開始充電。充電完成時，所有三個指示燈將會亮起。

### 選項 1 - 直立式充電座

將組裝好的吸塵器放在充電座上進行充電。請確保延長管上的接點與充電座上的接點對齊。當充電完成並準備再次使用吸塵器時，將其從充電座上拿起。

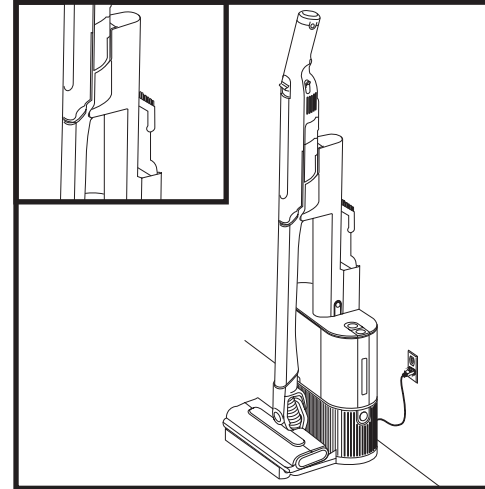
### 選項 2 - 一顆電池放在充電座充電，同時使用另一顆電池

您可以交換電池，在使用一顆電池的同時，為另一顆電池充電。從充電座插槽中取出已充飽電的電池，並將其插入手持吸塵器。將另一顆電池插入充電槽。開始充電時，指示燈將亮起，並在電池充飽後幾分鐘熄滅。

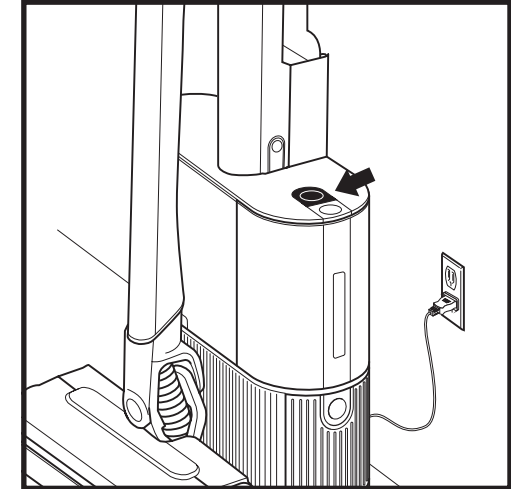
**注意：**當裝置正確放置於充電座時，手持吸塵器上的充電指示燈會閃爍，表示充電已開始。充電完成時，所有三個指示燈將會持續亮起 5 分鐘，然後熄滅。

**注意：**主裝置在出廠時已經有部分電量。為了達到最佳運行時間，第一次使用前請完全充飽電（約 3.5 小時）。讓裝置保持插入充電座並不會損害電池壽命。

## 使用充電座



在預設模式下，每當吸塵器放置到充電座時，集塵桶將會自動清空。



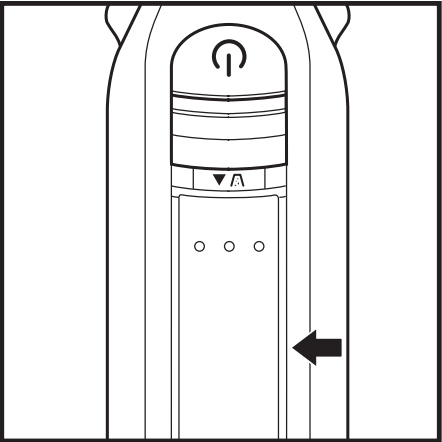
如果您想要關閉此清空功能，請按下充電座頂部的靜音按鈕。月亮圖示亮起時，將會停用自動集塵功能，而充電座僅會對裝置進行充電。若要重新開啟自動集塵功能，只需再次按下靜音按鈕即可。

**注意：**請勿在清空週期進行時取下吸塵器。

鋰電池

鋰電池出廠時並未完全充飽電。在首次使用前，請完全充飽電。首次使用期間，請將每顆電池使用至完全沒電。這可以幫助電池進行調節保養。

指示燈會顯示充電狀態與電池電量



充電狀態



注意： 每顆電池約需要 3.5 小時以充飽電。  
LED 燈會在完全充飽電後 5 分鐘內自動熄滅。

使用中

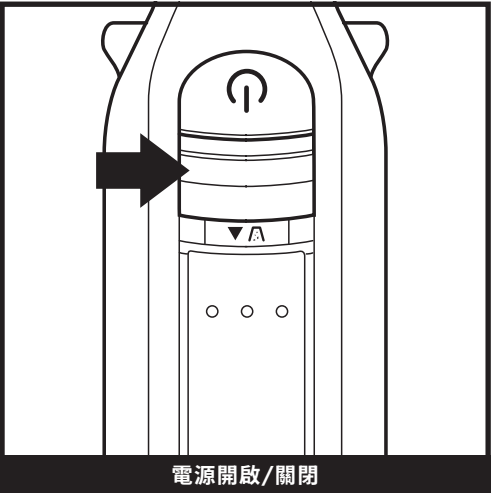


鋰電池回收

當 Shark™ 鋰電池需要更換時，請根據當地法規或條例處理或回收這些電池。在某些地區，將用過的鋰電池丟進垃圾桶或都市固體廢棄物處理是不合法的。請將使用過的電池交回授權的回收中心或零售商進行回收。請聯絡當地的回收中心瞭解已用過電池的棄置地點。

注意：如同所有鋰電池，Shark™ 電池的電量會隨著時間經過，自然地從全新電池的 100% 電量自然衰減。

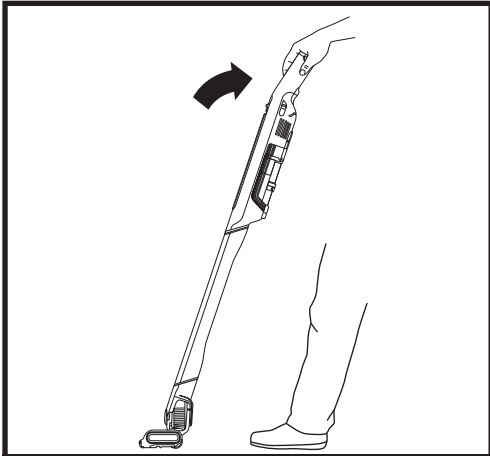
控制開關



按下手柄上的開關按鈕即可開啟電源。再次按下按鈕即可關閉電源。

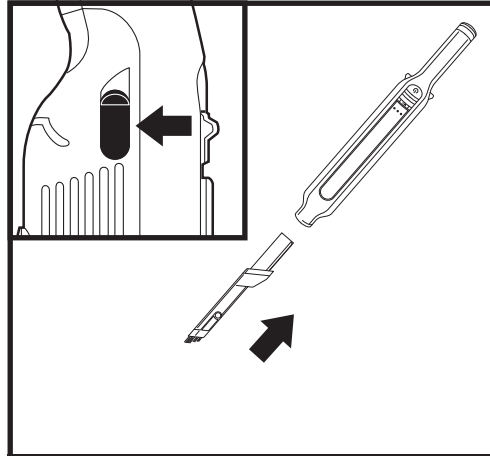


## 清潔模式



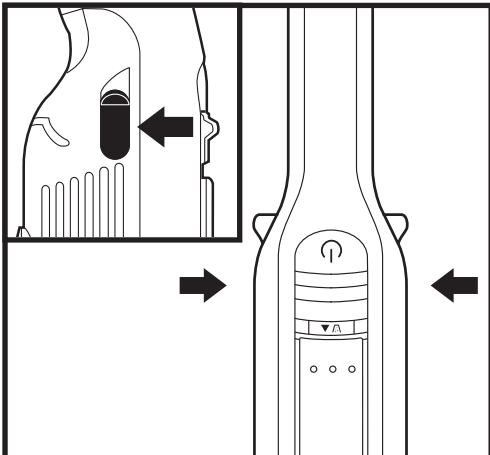
直立

使用 PowerFins™ 地板吸頭，能夠有效清潔未鋪地毯的地板和地毯。當連接手持吸塵器並開啟電源時，會啟動毛刷滾輪。



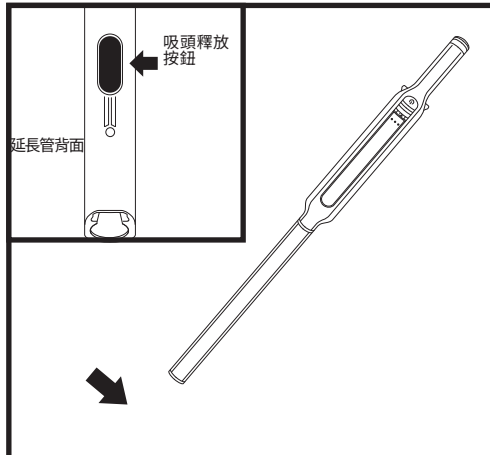
使用配件進行高處清潔

安裝配件以進行樓梯、家具和其他高處區域的有效清潔。若要安裝配件，請將配件滑入吸頭開口。若要移除配件，請按下手柄兩側的釋放按鈕並滑出配件。



使用手持吸塵器進行高處清潔

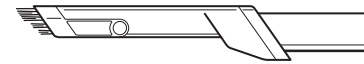
拆下手持吸塵器清潔高處區域。若要拆下手持吸塵器，滑動手柄兩側的釋放按鈕，然後將手持吸塵器從延長管上取下。



使用延長管進行高處清潔

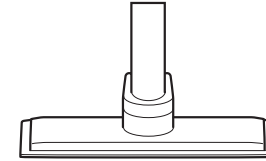
將吸塵器直立放置，按下位於延長管底部、吸頭上方的吸頭釋放按鈕。提起延長管即可拆下。非常適合清潔踢腳板、天花板風扇、窗台以及其他難以觸及的區域。若要重新安裝延長管，請將其對準地板吸頭的頸部，然後將其滑入直到發出卡嗒聲後固定到位。

## 隨附配件



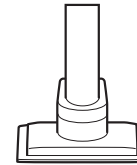
### 窄縫除塵吸頭

結合兩種清潔功能。窄縫吸頭可延伸觸及狹窄空間，柔軟刷頭則適合清潔易損表面上的灰塵。



### 寬型家飾布料吸頭

寬大的表面區域有助於從床墊、沙發、窗簾及燈罩等其他精緻布料上移除寵物毛髮和大型碎屑。



### 家飾布料吸頭

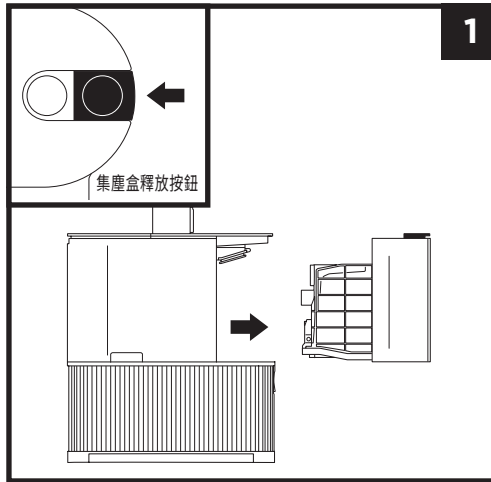
可清除床墊、沙發、窗簾及其他精緻布料上的寵物毛髮、灰塵及大型碎屑。

注意：所有配件皆可與延長管或手持吸塵器搭配使用。

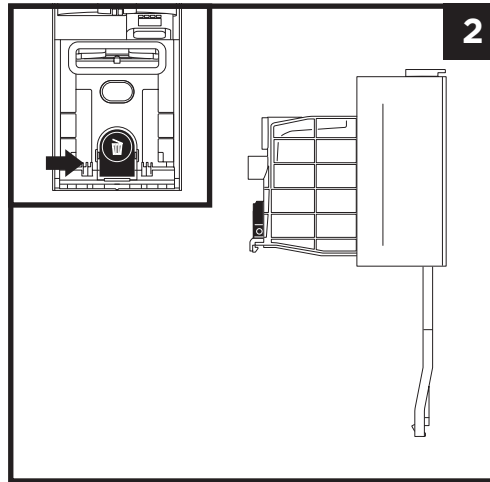


## 保養您的吸塵器

### 清空充電座集塵盒



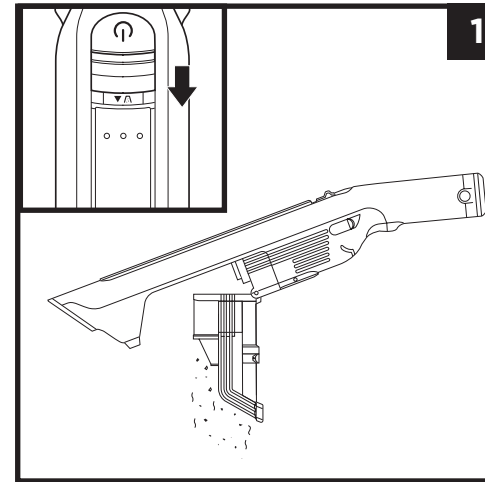
充電座集塵盒可容納最多 30 天的灰塵和碎屑。當碎屑量接近最大裝填線時，請清空充電座集塵盒。若要卸下集塵盒，按下充電座右上方的集塵盒釋放按鈕，然後滑出集塵盒。



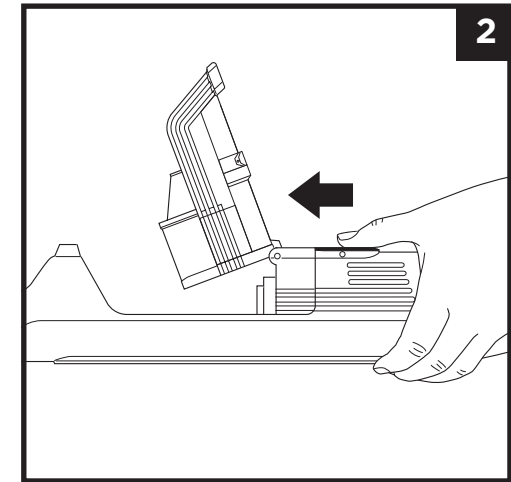
清空集塵盒時，請將其放入垃圾桶中至少 3 英吋深，然後按下附垃圾桶圖示的釋放按鈕。集塵盒蓋會向下打開，釋出碎屑。將集塵盒靠在垃圾桶內側並輕輕拍打，使剩餘的碎屑掉落。將集塵盒滑回充電座的插槽，直到發出卡嗒聲後固定到位，即可裝回集塵盒。

## 保養您的吸塵器

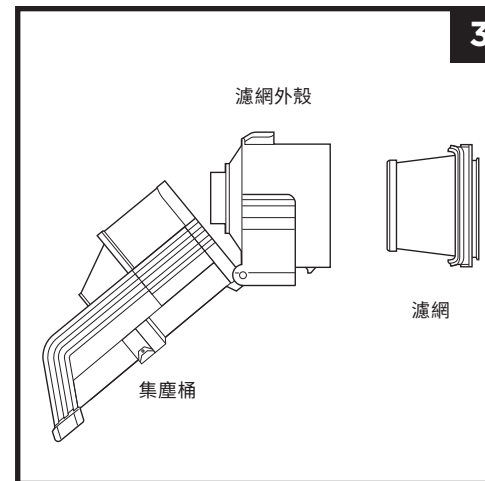
### 清潔集塵桶和濾網



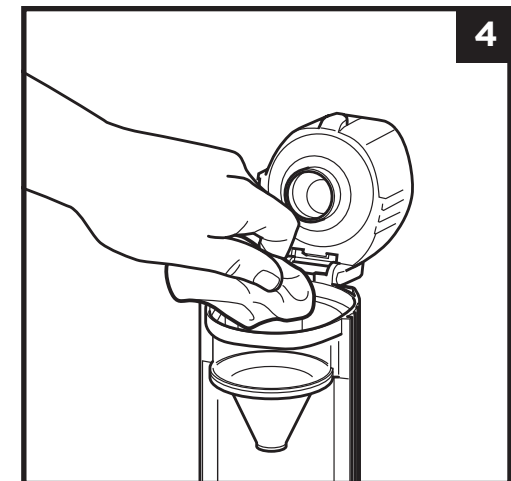
1. 關閉電源，將集塵桶拿到垃圾桶上方。向後滑動釋放按鈕，集塵桶會擺動開啟。輕拍濾網篩網，敲掉灰塵和碎屑。



2. 當集塵桶打開且電源關閉時，按下手柄底部的濾網釋放門鎖，然後拉出濾網外殼。



3. 按下濾網外殼兩側的卡扣，取出濾網。若要清洗濾網，請使用清水手洗濾網，並晾乾至少 24 小時後再重新安裝。若要重新安裝濾網，請將濾網滑回外殼內，然後將外殼推回原位。



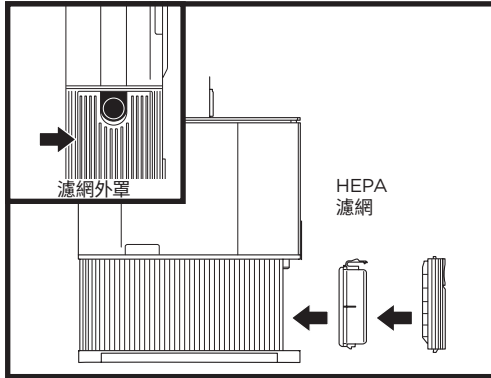
2. 若要深度清潔集塵桶，請將集塵桶打開 90 度，直到發出卡嗒聲後開啟。使用布擦拭乾淨。用水沖洗集塵桶，並用濕布擦拭乾淨。等待其完全晾乾（至少 24 小時）。集塵桶完全晾乾後再重新裝回。

注意：請勿將任何零件或配件放入洗碗機清洗。

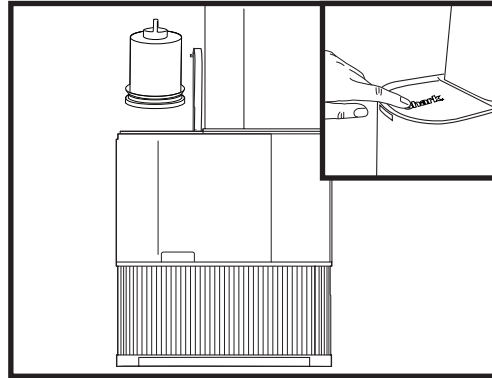
## 保養您的吸塵器

### 清潔充電座濾網

請每個月清潔一次濾網。



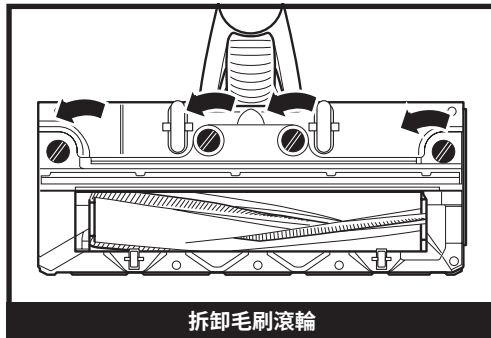
若要取出馬達後置濾網，請按下濾網門頂部的按鈕，然後將濾網門朝充電座反方向傾斜並提起。取出充電座內的馬達後置濾網。若要重新安裝馬達後置濾網，請將濾網放回充電座並蓋上濾網門。



若要取出充電座中的馬達前置濾網，請打開充電座左上方的蓋子。提起泡棉濾網的把手將其取出，然後取出下方的毛氈濾網。在垃圾桶上方輕拍濾網，然後用冷水沖洗。重新安裝前，讓濾網晾乾 24 小時。

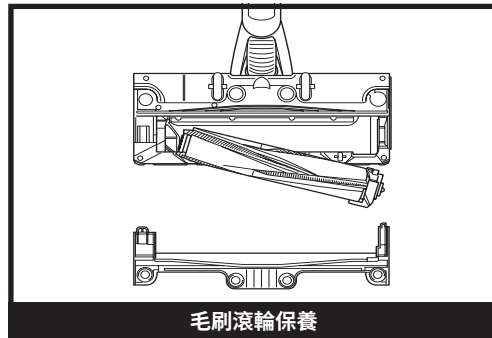
為獲得最佳效果，請每月至少清潔一次充電座濾網，並定期更換。清潔濾網時「僅」用冷水沖洗，以免清潔劑損壞濾網。重新安裝所有濾網前，請晾乾至少 24 小時，以避免液體進入電力零件。保持泡棉濾網的潔淨有助於確保自動清空功能正常運作。

### 吸頭維護



拆卸毛刷滾輪

1. 關閉吸塵器。
2. 按下吸頭釋放按鈕，從延長管上拆下吸頭。
3. 使用硬幣逆時針轉動解開 3 個鎖，然後掀起蓋子並向後傾斜吸頭頸部。



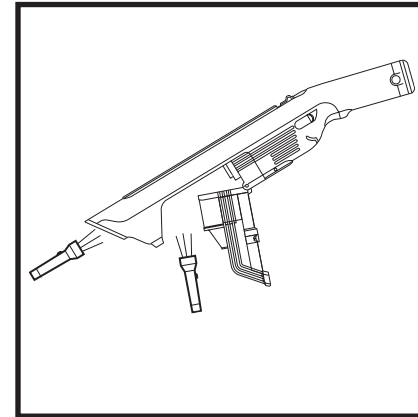
毛刷滾輪保養

4. 清除任何堵塞物，並將毛刷滾輪和地板吸頭上的碎屑移除。
5. 輕拍鬆散的碎屑，然後用乾毛巾將毛刷滾輪擦拭乾淨。如有需要，請僅使用清水手洗毛刷滾輪，並完全晾乾至少 24 小時。
6. 當毛刷滾輪完全乾燥後，將其重新安裝至吸頭中，先插入一端，再插入另一端，直到發出卡嗒聲後固定到位。

## 保養您的吸塵器

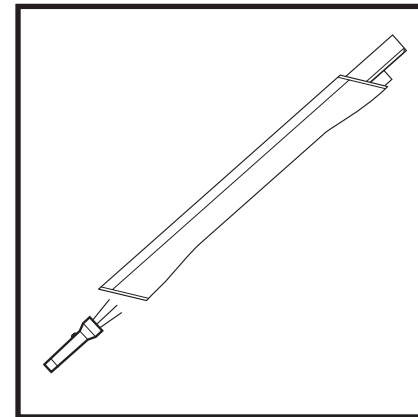
### 檢查是否有堵塞

如果吸塵時捲入硬物或尖銳物品，或聽到異常噪音，請檢查是否有堵塞或物體卡在毛刷滾輪中。



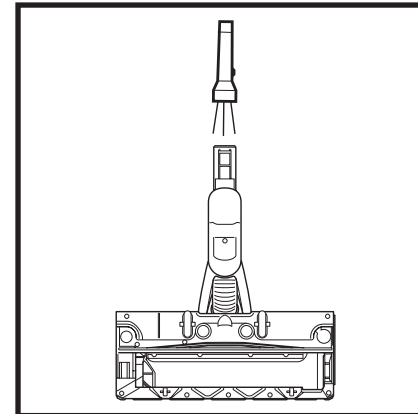
#### 檢查手持吸塵器內的堵塞情況：

1. 關閉吸塵器。
2. 從延長管上拆下手持吸塵器。
3. 檢查通往集塵桶的所有進氣口，並清除任何碎屑或堵塞物。



#### 檢查延長管內的堵塞情況：

1. 關閉吸塵器。
2. 從延長管上拆下手持吸塵器和地板吸頭。
3. 檢查延長管兩端是否有堵塞或碎屑。
4. 清除任何碎屑或堵塞物。



#### 檢查地板吸頭內的堵塞情況：

1. 關閉吸塵器。
2. 拆下延長管。
3. 使用硬幣，逆時針轉動解開吸頭底部的 3 個鎖。
4. 掀起吸頭蓋，並將吸頭頸部向後傾斜。
5. 檢查開口並清除任何碎屑。
6. 將蓋子上的卡扣滑入插槽以重新裝回蓋子。用力按壓所有邊緣。順時針轉動鎖上所有鎖。

保養您的吸塵器

故障排除

**警告：**為了降低觸電或意外運作的風險，維修前請先關閉電源並取出電池。

吸塵器無法吸入碎屑。沒有吸力或吸力不足。手持吸塵器上的頂部指示燈恆亮黃燈（圖 1）。請參閱「檢查是否有堵塞」和「保養您的吸塵器」一節以瞭解更多資訊。

1. 集塵桶可能已滿；請清空集塵桶。
2. 檢查地板吸頭是否有堵塞；如有需要，請清除堵塞物。
3. 移除纏繞在毛刷滾輪上的線材、地毯纖維或頭髮。
4. 檢查手持吸塵器與延長管之間的連接處是否有堵塞；如有需要，請清除堵塞物。
5. 檢查濾網是否需要清潔。請依照說明清洗濾網，並等待完全晾乾後重新安裝。

吸塵器吸起小地毯。

1. 請確認您未啟用強效模式。在小地毯或邊緣精細縫製的地毯上吸塵時，請務必小心。
2. 關閉裝置以鬆開地毯，然後重新啟動。

我的吸塵器配有 PowerFins™ 吸頭，但毛刷滾輪不會旋轉。（圖 2）

1. 檢查手持吸塵器上的 LED 電池指示燈。如果中間的 LED 指示燈在閃爍，則表示出現超速運行錯誤。請致電客服專線 0800-000-605 或造訪 [sharkninja.tw](http://sharkninja.tw)。
2. 立即關閉吸塵器。重新開啟吸塵器前，請先清除任何堵塞物。使用時，請確保手持吸塵器後傾至足夠角度以啟動毛刷滾輪。
3. 如果地板吸頭配有前照燈但未亮起，則表示手持吸塵器、延長管和吸頭之間的連接有問題。請嘗試拆下零件，然後重新連接。

吸塵器自行關閉。

吸塵器自行關閉的原因可能包括堵塞、電池問題或過熱。若吸塵器自行關閉，請按照以下步驟操作：

1. 開啟吸塵器並檢查手持吸塵器上的電池指示燈。若需要充電，請確保吸塵器的電源關閉後再插入充電器。
2. 檢查是否出現超速運行或馬達過熱的指示燈。清空集塵桶並清潔濾網（請參閱「清潔集塵桶和濾網」一節）。清空集塵桶並清潔濾網（請參閱「清潔集塵桶和濾網」一節）。
3. 檢查是否出現超速運行或馬達過熱的指示燈。檢查延長管、配件和進氣口是否有堵塞，並清除任何堵塞物。檢查延長管、配件和進氣口是否有堵塞，並清除任何堵塞物。
4. 讓裝置和電池冷卻至少 45 分鐘，直到恢復至室溫。
5. 按下開啟/關閉開關以重新啟動吸塵器。

注意：若吸塵器仍無法正常運作，請致電客服專線 0800-000-605 或造訪 [sharkninja.tw](http://sharkninja.tw)。

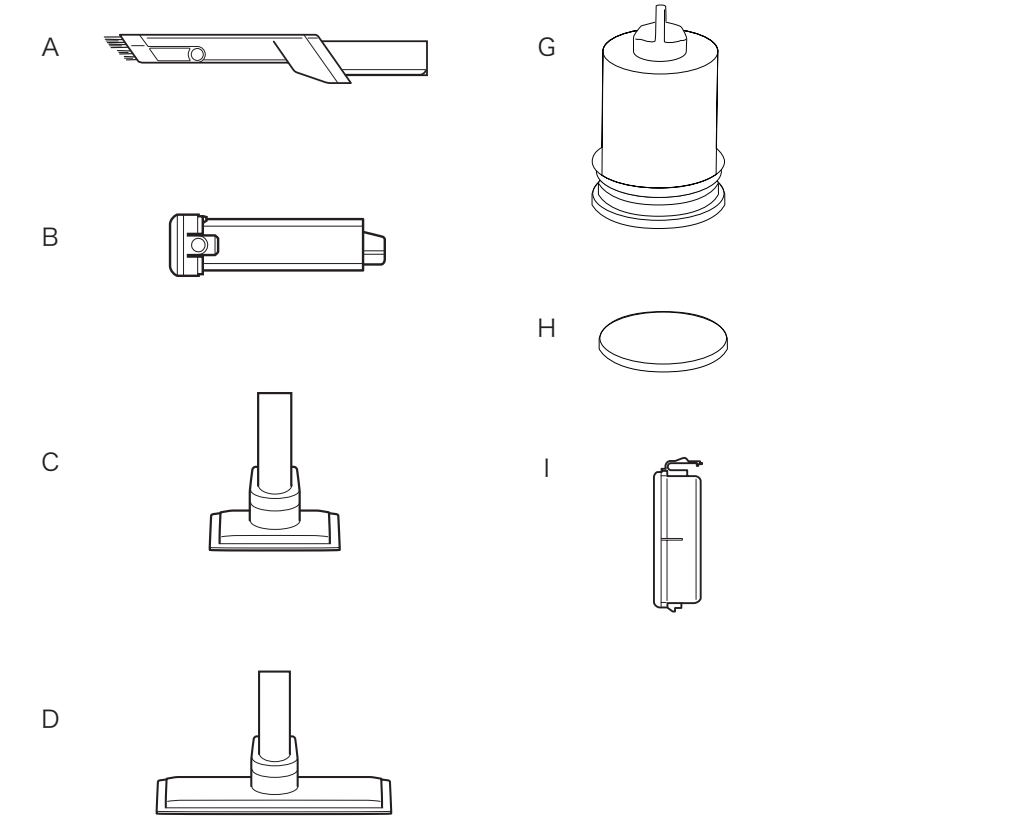
吸塵器上的指示燈閃爍。

- 右側指示燈閃爍（圖 A）：請為電池充電。
- 中間指示燈亮起黃燈（圖 B）：吸頭堵塞等情況（請參考第 15 頁「檢查堵塞情況」）
- 中間指示燈閃爍黃燈（圖 C）：吸頭或其他電力系統出現問題。請聯絡客戶服務部門。



可於 SHARKNINJA.TW 購買的其他配件

- Ⓐ 窄縫除塵吸頭
- Ⓑ 替換電池
- Ⓒ 家飾布料吸頭
- Ⓓ 寬型家飾布料吸頭
- Ⓔ 濾網（手持吸塵器專用）
- Ⓕ 電池充電套筒
- Ⓖ 馬達前置泡棉濾網
- Ⓗ 馬達後置毛氈濾網
- Ⓘ HEPA 濾網



注意：並非所有機型都隨附所有配件。若需訂購額外配件，請造訪 [sharkninja.tw](http://sharkninja.tw)

## 一 (1) 年有限保固

此一 (1) 年有限保固適用於從**新加坡商維諾瓦股份有限公司臺灣分公司**授權零售商購買的產品。保固範圍僅適用於原購買人及原產品，且不得轉讓。

SharkNinja保證在正常家庭使用條件下，並依照《使用者指南》中所示的要求進行維護的情況下，本產品自購買日起一(1)年內不會出現材料或做工上的瑕疵，惟需遵守以下條件與排除項目：

保固涵蓋哪些項目？

1. 原裝置及/或 SharkNinja 自行判定為有瑕疵的非耗損零件，可在原購買日期起一 (1) 年內進行維修或更換。
2. 若為提供更換產品的情況，保固期限將於收到更換產品後六 (6) 個月或原保固期剩餘時間內（取較長者）結束。SharkNinja 保留以等值或更高價值產品進行更換的權利。

保固不涵蓋哪些項目？

1. 正常磨損的零件（如泡棉濾網、HEPA 濾網、清潔墊等），這些零件需定期維護及/或更換以確保裝置正常運作，並不在保固涵蓋範圍內。替換零件可於 **sharkninja.tw** 購買。
2. 任何遭到竄改或用於商業用途的裝置。
3. 因誤用、濫用、疏忽操作（如吸入水或其他液體）、未按要求進行維護（如未清潔濾網或未清除滾刷上的異物），或運輸過程中不當處理所造成的損壞。
4. 衍生性和附帶性損害。
5. 由非 SharkNinja 授權維修人員所造成的瑕疵。此類瑕疵包括由非 SharkNinja 授權人員在進行運送、修改或修理的過程中，所導致的 SharkNinja 產品（或其零件）損壞。

如何獲得維修服務

若您的設備在正常家庭使用條件下於保固期內無法正常運作，請造訪 **sharkninja.tw** 查詢產品保養與維護的自助服務。我們也建議您於 **sharkninja.tw** 完成產品線上註冊，並在致電時備妥產品，以便我們能更有效地協助您。

如何提出產品保固聲明

您必須造訪 **sharkninja.tw** 以提出產品保固聲明。為了更有效地協助您，請於致電前完成產品註冊，並在致電時備妥產品。您需要收據作為購買憑證。客戶服務專員將提供您退回及包裝的相關指示。我們也建議您於 **sharkninja.tw** 完成產品線上註冊，並在致電時備妥產品，以便我們能更有效地協助您。

## 一 (1) 年有限電池保固

此一 (1) 年有限保固適用於從**新加坡商維諾瓦股份有限公司臺灣分公司**授權零售商購買的產品。保固範圍僅適用於原購買人及原產品，且不得轉讓。

SharkNinja 保證在正常家庭使用條件下，並依照《使用者指南》中所示的要求進行維護的情況下，本電池自購買日起一 (1) 年內不會出現材料或做工上的瑕疵，惟需遵守以下條件與排除項目：

保固涵蓋哪些項目？

1.經 SharkNinja 自行判定為有瑕疵的原電池，可在原購買日期起一 (1) 年內進行更換。

2.若為提供更換電池的情況，保固期限將於收到更換電池後六 (6) 個月或原保固期剩餘時間內（取較長者）結束。SharkNinja 保留以等值或更高價值產品進行更換的權利。

保固不涵蓋哪些項目？

1. 電池的正常耗損。如需確保電池正常運作，請在適當溫度下存放和使用。替換電池可於 **sharkninja.tw** 購買。
2. 任何遭到竄改或用於商業用途的電池。
3. 因誤用（如將電池暴露於液體或極端高/低溫環境）、濫用、疏忽操作、未按要求進行維護，或運輸過程中不當處理所造成的損壞。
4. 衍生性和附帶性損害。
5. 由非 SharkNinja 授權維修人員所造成的瑕疵。此類瑕疵包括由非 SharkNinja 授權人員在進行運送、修改或修理的過程中，所導致的 SharkNinja 產品（或其零件）損壞。

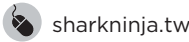
如何獲得維修服務

若您的電池在正常家庭使用條件下於保固期內無法正常運作，請造訪 **sharkninja.tw** 查詢產品保養與維護的自助服務。為了更有效地協助您，請於 **sharkninja.tw** 完成產品線上註冊，並在致電時備妥產品。

如何提出產品保固聲明

您必須造訪 **sharkninja.tw** 以提出產品保固聲明。您將需要收據作為購買憑證。我們也建議您於 **sharkninja.tw** 完成產品線上註冊，並在致電時備妥產品，以便我們能更有效地協助您。致電時，客戶服務專員將提供您退回及包裝的相關指示。

REGISTER YOUR PURCHASE



RECORD THIS INFORMATION

Model Number: \_\_\_\_\_

Date Code: \_\_\_\_\_

Date of Purchase: \_\_\_\_\_  
(Keep receipt)

Store of Purchase: \_\_\_\_\_

TECHNICAL SPECIFICATIONS

Voltage: 14.4V

**TIP:** You can find the model and serial numbers on the QR code label on the bottom of the back of the handheld vacuum and battery.

註冊您購買的產品



請記錄此資訊

型號: \_\_\_\_\_

日期代碼: \_\_\_\_\_

購買日期: \_\_\_\_\_  
(請保留收據)

購買商店: \_\_\_\_\_

技術規格

電壓: 14.4V

**提示:**您可以在手持吸塵器和電池背面底部的 QR 碼標籤上找到型號和序號。

限用物質含有情況標示聲明書

Declaration of the Presence Condition of the Restricted Substances Marking

設備名稱: Shark EVOPOWER Std 自動集塵無線吸塵器 Equipment name				型號(型式): CS150TWAE Type designation (Type)		
單元Unit	限用物質及其化學符號 Restricted substances and its chemical symbolsv					
	鉛 Lead (Pb)	汞 Mercury (Hg)	鎘 Cadmium (Cd)	六價鉻 Hexavalent chromium (Cr <sup>+6</sup> )	多溴聯苯 Polybrominated biphenyls (PBB)	多溴二苯醚 Polybrominated diphenyl ethers (PBDE)
PCBA	○	○	○	○	○	○
電機	○	○	○	○	○	○
充電端子支 撐架	○	○	○	○	○	○
塑膠外殼	○	○	○	○	○	○
內部配線	○	○	○	○	○	○
<p>備考1. `超出0.1 wt %` 及 `超出0.01 wt %` 係指限用物質之百分比含量超出百分比含量基準值。</p> <p>Note 1: “Exceeding 0.1 wt %” and “exceeding 0.01 wt %” indicate that the percentage content of the restricted substance exceeds the reference percentage value of presence condition.</p> <p>備考2. `○`係指該項限用物質之百分比含量未超出百分比含量基準值。</p> <p>Note 2: “○” indicates that the percentage content of the restricted substance does not exceed the percentage of reference value of presence.</p> <p>備考3. `—`係指該項限用物質為排除項目。</p> <p>Note 3: The “—” indicates that the restricted substance corresponds to the exemption.</p>						

掃描以註冊:  
sharkninja.tw  
型號:  
XXXXXXXX  
製造編號:  
Y20A3I09Z1A7

製造編號中前四位為製造日期編號。

In Manufacture Code, the first 4 letters are Manufacture Date Code.

以上圖中“Y20A”為例,Y代表製造月份(參考表A),20代表製造日期,A代表製造年份(參考表B)。

Take “Y20A” in above picture as example, “Y” means Month (refer to Table A), “20” means Date, “A” means Year (refer to Table B).

表A Table A	
月份 Month	編號 Code
1 月 January	A
2 月 February	F
3 月 March	H
4 月 April	J
5 月 May	K
6 月 June	Q
7 月 July	R
8 月 August	S
9 月 September	U
10 月 October	Z
11 月 November	X
12 月 December	Y

表A Table A	
年份 Year	編號 Code
2016	A
2017	F
2018	H
2019	J
2020	K
2021	Q
2022	R
2023	S
2024	U
2025	Z
2026	X
2027	Y
接下來 Next	從A重新開始 Start over with “A”

PLEASE READ CAREFULLY AND KEEP FOR FUTURE REFERENCE.

This Owner's Guide is designed to help you get a complete understanding of your new Shark™ Self-Empty Cordless Vacuum System.

Distributed by:

新加坡商維諾瓦股份有限公司臺灣分公司 104105臺北市中山區南京東路3段168號2樓之1

Illustrations may differ from actual product. We are constantly striving to improve our products; therefore the specifications contained herein are subject to change without notice.

This product may be covered by one or more U.S. patents. See [sharkninja.com/patents](https://sharkninja.com/patents) for more information.

請仔細閱讀並保留以供日後參考。

本《使用者指南》旨在幫助您全面瞭解新的 Shark™ 自動集塵無線吸塵器。

經銷商：

新加坡商維諾瓦股份有限公司臺灣分公司 104105臺北市中山區南京東路3段168號2樓之1

圖例可能與實際產品有所不同。我們將持續努力改善我們的產品，因此本文中的規格可能會有所變更，恕不另行通知。  
本產品可能受到一項或多項美國專利的保護。請參閱 [sharkninja.com/patents](https://sharkninja.com/patents) 以瞭解更多資訊。

---

© 2025 SharkNinja Operating LLC. EVOPOWER, POWERFINS, SHARK, and WANDVAC are trademarks of SharkNinja Operating LLC. RBRC is a trademark of Rechargeable Battery Recycling Corporation.

© 2025 SharkNinja Operating LLC。EVOPOWER、POWERFINS、SHARK 和 WANDVAC 是 SharkNinja Operating LLC 的商標。RBRC 是 Rechargeable Battery Recycling Corporation (充電電池回收公司) 的商標。

CS150TWAE\_IB\_MP\_Mv11