

SharkTM
Clean Sense IQTM
Cordless Vacuum
Clean Sense IQTM
無線吸塵器

IW2241TW Series
IW2241TW 系列

OWNER'S GUIDE
使用者指南



IMPORTANT SAFETY INSTRUCTIONS

FOR HOUSEHOLD USE ONLY • PLEASE READ
ALL INSTRUCTIONS BEFORE USING THIS VACUUM.

If the charging cord plug does not fit fully into the outlet, reverse the plug. If it still does not fit, contact a qualified electrician. **DO NOT** force into outlet or try to modify to fit.

To reduce the risk of shock and unintended operation, turn off power and remove the battery before servicing.



⚠ WARNING

To reduce the risk of fire, electric shock, injury, or property damage:

THE FLOOR NOZZLE, WAND, AND HAND VACUUM CONTAIN ELECTRICAL CONNECTIONS:

1. This vacuum consists of a motorized nozzle, wand, and hand vacuum. These components contain electrical connections, electrical wiring, and moving parts that potentially present risk to the user.
2. Before each use, carefully inspect all parts for any damage. If a part is damaged, discontinue use.
3. Use only identical replacement parts.
4. This vacuum contains no serviceable parts.
5. Use only as described in this manual. **DO NOT** use the vacuum for any purpose other than those described in this manual.
6. With the exception of the filters and dust cup, **DO NOT** expose any parts of the vacuum to water or other liquids.
7. Keep the appliance and its cord out of reach of children. **DO NOT** allow the appliance to be used by children. **DO NOT** allow to be used as a toy. Close supervision is necessary when used near children.

GENERAL USE

8. This appliance can be used by persons with reduced physical, sensory, or mental capabilities or lack of experience or knowledge if they have been given supervision or instruction concerning use of the appliance in a safe way and understand the hazards involved. Cleaning and user maintenance shall not be done by children.

9. Always turn off the vacuum before connecting or disconnecting any current carrying hoses, motorized nozzles, chargers, batteries, or other electrical or mechanical parts.
10. **DO NOT** handle plug or vacuum with wet hands.
11. **DO NOT** use without dust cup, filters, and brushroll in place.
12. Only use Shark™ branded filters and accessories.
13. **DO NOT** put any objects into nozzle or accessory openings. **DO NOT** use with any opening blocked; keep free of dust, lint, hair, and anything that may reduce airflow.
14. **DO NOT** use if nozzle or accessory airflow is restricted. If the air paths or the motorized floor nozzle become blocked, turn the vacuum off. Remove all obstructions before you turn on the unit again.
15. Keep nozzle and all vacuum openings away from hair, face, fingers, uncovered feet, or loose clothing.
16. **DO NOT** use if vacuum is not working as it should, or has been dropped, damaged, left outdoors, or dropped into water.
17. Use extra care when cleaning on stairs.
18. **DO NOT** leave the vacuum unattended while powered on.
19. When powered on, keep the vacuum moving over the carpet surface at all times to avoid damaging the carpet fibers.

20. **DO NOT** place vacuum on unstable surfaces such as chairs or tables.

21. **DO NOT** use to pick up:

- a) Liquids
- b) Large objects
- c) Hard or sharp objects (glass, nails, screws, or coins)
- d) Large quantities of dust (including drywall, fireplace ash, or embers). **DO NOT** use as an attachment to power tools for dust collection.
- e) Smoking or burning objects (hot coals, cigarette butts, or matches)
- f) Flammable or combustible materials (lighter fluid, gasoline, or kerosene)
- g) Toxic materials (chlorine bleach, ammonia, or drain cleaner)

22. **DO NOT** use in the following areas:

- a) Poorly lit areas
- b) Wet or damp surfaces
- c) Outdoor areas
- d) Spaces that are enclosed and may contain explosive or toxic fumes or vapors (lighter fluid, gasoline, kerosene, paint, paint thinners, mothproofing substances, or flammable dust)

23. Turn off the vacuum before plugging in or unplugging the charger.

24. Turn off the vacuum before any adjustment, cleaning, maintenance, or troubleshooting.

25. During cleaning or routine maintenance, **DO NOT** cut anything other than hair, fibers, or string wrapped around the brushroll.

26. Allow all filters to air-dry completely before replacing in the vacuum to prevent liquid from being drawn into electric parts.

27. **DO NOT** modify or attempt to repair the vacuum or the battery yourself, except as indicated in this manual.

DO NOT use the battery or vacuum if it has been modified or damaged. Damaged or modified batteries may exhibit unpredictable behavior resulting in fire, explosion, or risk of injury. **DO NOT** unplug by pulling on the cord. To unplug, grasp the plug, not the cord.

28. Turn off all controls before unplugging.

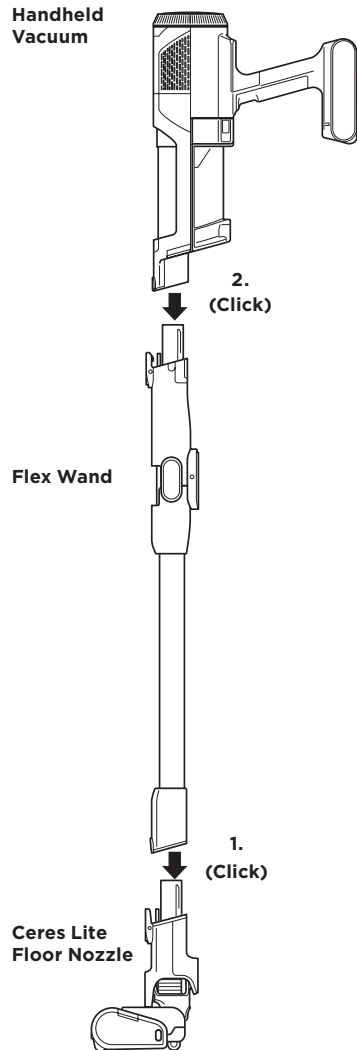
BATTERY PACK

29. The battery is the power source for the vacuum. Carefully read and follow all charging instructions.
30. To prevent unintentional starting, ensure the vacuum is powered off before picking up or carrying the vacuum. **DO NOT** carry the appliance with your finger on the power switch.
31. Use only Shark™ charger dock DK18-180080HS-J. Use of an incorrect charger may result in no charging and/or unsafe conditions.
32. Use only with Shark™ battery pack XPBTR430SLEU.
33. Keep the battery away from all metal objects such as paper clips, coins, keys, nails, or screws. Shorting the battery terminals increases the risk of fire or burns.
34. Under abusive conditions, liquid may be ejected from the battery. Avoid contact with this liquid, as it may cause irritation or burns. If contact occurs, flush with water. If liquid contacts eyes, seek medical help.
35. Battery should not be stored at temperatures below 37.4°F (3°C) or above 104°F (40°C) to maintain long-term battery life.
36. **DO NOT** charge battery at temperatures below 40°F (5°C) or above 104°F (40°C).
37. Store the appliance indoors. **DO NOT** use or store it below 37.4°F (3°C). Ensure the appliance is at room temperature before operating.
38. **DO NOT** expose the battery to fire or temperatures above 265°F (130°C) as it may cause explosion.

SAVE THESE INSTRUCTIONS

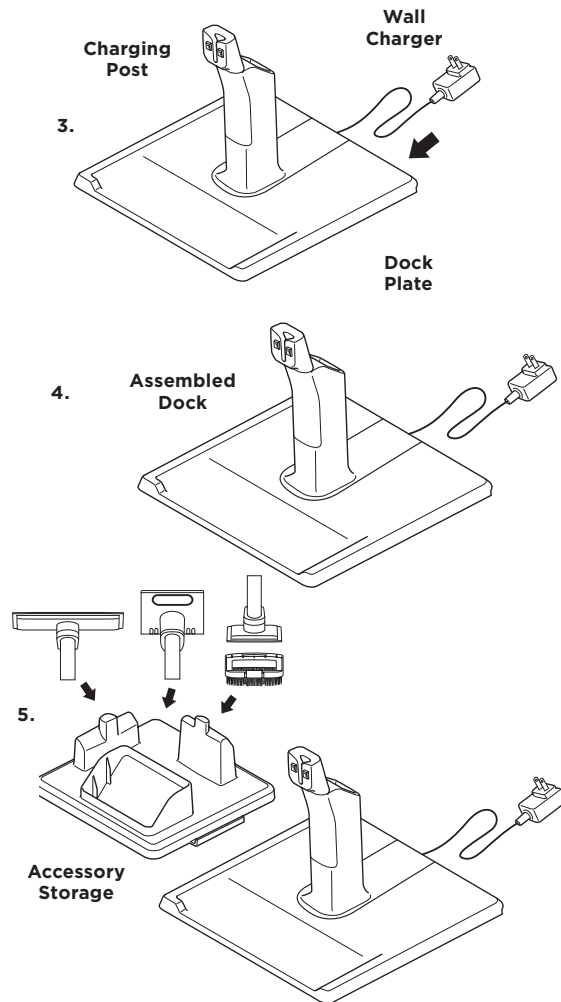
ASSEMBLY

1. Slide the **Wand** onto the neck of the **Floor Nozzle** until it clicks into place.
2. Align the **Hand Vacuum** nozzle opening with the top of the wand and slide it on until it clicks into place.
3. Make sure the **Dock Plate** is facing upright. Slide the **Charging Post** into the slot on back of dock until it clicks.



4. Place the dock on the floor near a wall outlet. Plug the **Wall Charger** into the outlet, then connect the cord to the port on the back of the charging post.
5. Attach the accessory dock to the left side of the Dock Base. Place the Motorized Hand Tool, the Wide Upholstery tool and the Pet Multi-Tool on the accessory dock. Place the Dust Crevice Tool on the back of the charging post for storage.

For proper operation, ensure all components are completely connected and clicked into place.



NOTE: Once the charging post is installed, it can't be removed.

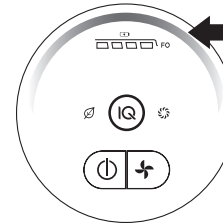
LI-ION BATTERY

Prior to first use, charge the battery completely. A full charge takes approximately 4.5 hours.

RUNTIMES PER FULLY CHARGED BATTERY

With a full charge, the unit will have up to a 40-minute runtime. Visit sharkninja.tw online for more information.

LED BATTERY POWER AND CHARGING INDICATORS



Charging

- LED will pulse yellow when reaching 0-75% charge.
- LED will pulse green from 75% - 100% charge.
- White LED: the battery pack is fully charged.

NOTE: Full charge takes approximately 4.5 hours.

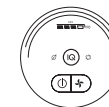
Additional Notes

1. LEDs turn off once the battery is fully charged.
2. Unit will not power on when charger is connected.

In Use



Full Charge



Mid Charge



Low Charge



Nearly Empty



No Charge

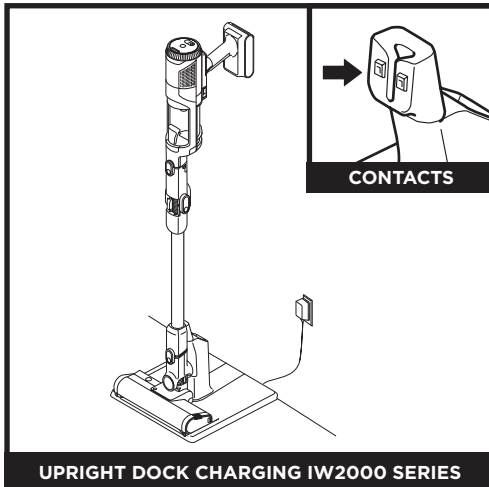
RECYCLING THE LI-ION BATTERY

When the Shark™ Li-ion battery needs to be replaced, dispose of it or recycle it in accordance with local ordinances or regulations. In some areas, it is illegal to place spent lithium-ion batteries in the trash or in a municipal solid waste stream. Return spent batteries to an authorized recycling center or to the retailer for recycling. Contact your local recycling center for information on where to drop off the spent battery.

NOTE: The Shark™ battery, like all lithium-ion batteries, will naturally decrease in capacity over time from the 100% capacity of a new battery.

CHARGING

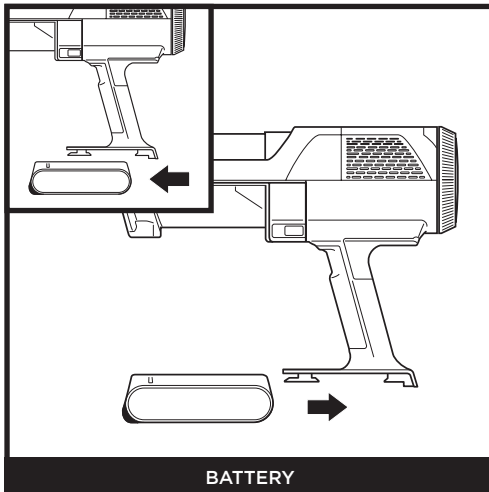
CHARGING WHILE IN STORAGE MODE



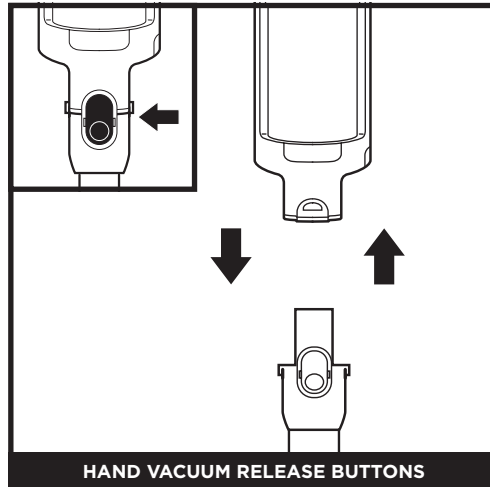
Charge the unit by placing it on the dock. Make sure the contacts on the wand are aligned with the contacts on the charging post.

When charging is complete and you need to use the unit again, lift it off the dock.

REMOVING THE BATTERY



To remove the battery from the hand vacuum, press the release tabs on the battery cap and slide out the battery. To reinstall, slide the battery into the compartment in the handle until it clicks into place.



To detach the hand vacuum from the wand, press the front latch release button on the hand vac where it meets the wand, then lift off the hand vacuum.

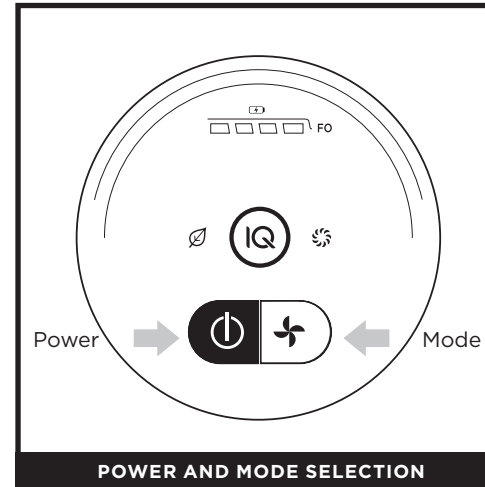
To reattach the hand vacuum to the wand, align the nozzle opening over the top of the wand and slide it on until it clicks into place.

NOTE: When the unit is docked properly, the charging lights on the hand vacuum will blink, indicating that charging has begun. When charging is complete, all three indicator lights will remain on for 5 minutes, then shut off.

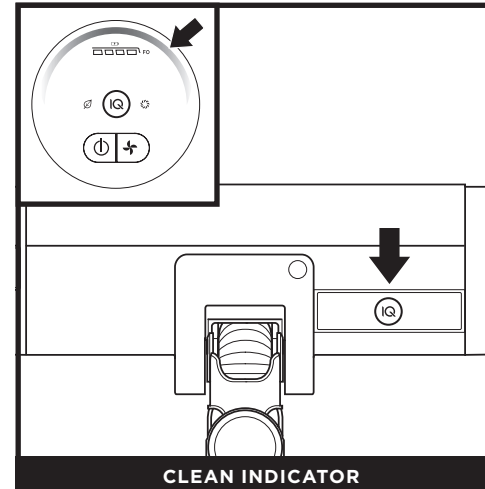
NOTE: The main unit comes with a partial charge. For maximum runtime, charge fully before first use (approximately 4.5 hours). Leaving the unit plugged in will not damage battery life.

CHARGING

CONTROLS AND CLEANING MODES



Press the **On/Off** button on the handle to turn on power. To turn off power, press the button again. To toggle between ECO, IQ, and BOOST modes, press the mode selection button.



The **Clean Indicator** visually confirms when floors are clean. When the unit senses heavy debris, suction will increase for more cleaning power.

When the debris is cleared, suction will decrease to the base power level. For best results, continue cleaning until the indicator returns to its lowest level before moving to the next area.

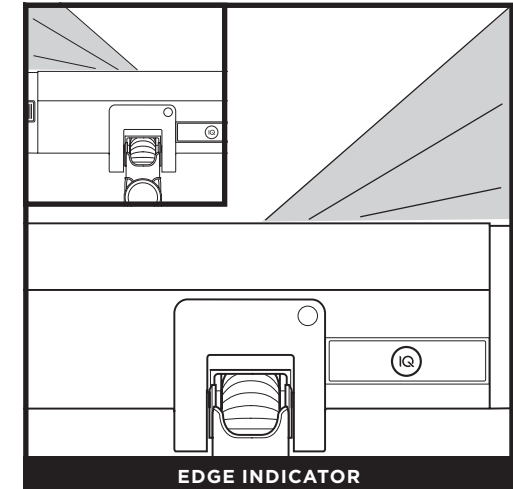
Clean Sense IQ™ Features

DirtDetect: Identifies dirtier high-traffic areas and automatically boosts suction power to pull in hidden messes.

FloorDetect: Brushroll responds to surface changes and automatically adjusts to optimize your clean.

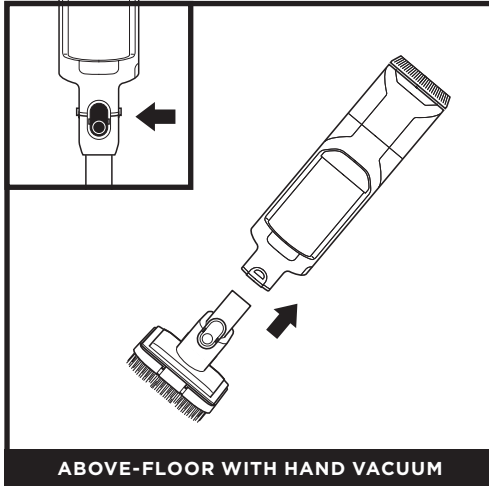
EdgeDetect: Dynamically detects edges and corners and maximizes suction power to remove stubborn dirt.

LightDetect: Senses low-light situations and automatically illuminates dark areas to spot dirt and debris.

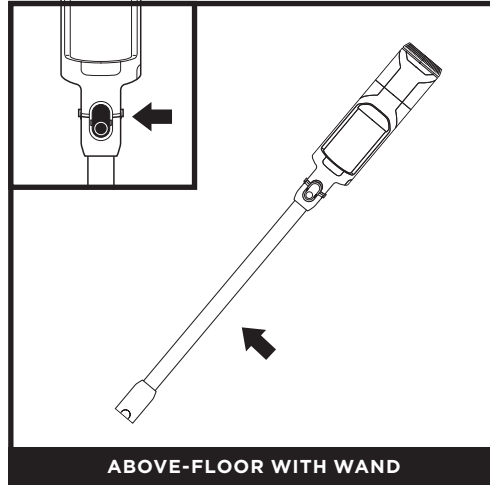


When an edge is detected, the headlights will illuminate the edge to focus on targeted debris.

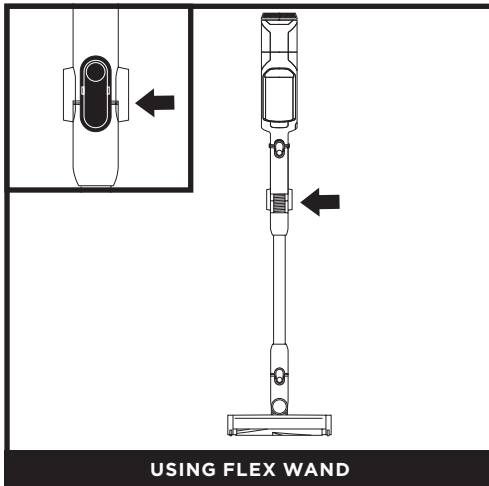
USING YOUR VACUUM



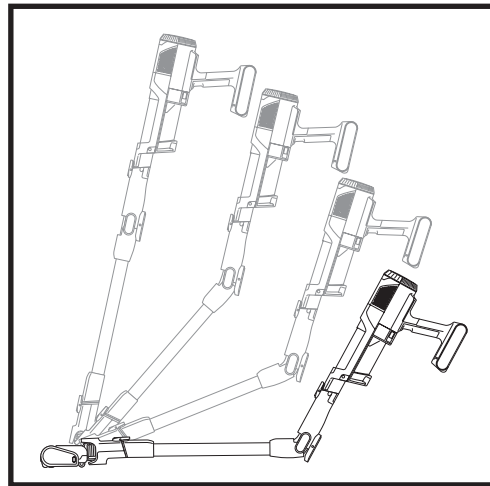
Detach the hand vacuum to clean above-floor areas. Press the front latch release button on the hand vac where it meets the wand, then lift off the hand vacuum. To attach an accessory to the hand vacuum, slide it into the opening in the nozzle. To remove, press the front latch release button on the hand vac where it meets the wand, and slide out the accessory.



To detach the floor nozzle from the wand, step on the nozzle while pressing the nozzle release button at the bottom of the wand. Lift the wand to remove it. To reattach the wand, align it over the neck of the floor nozzle, then slide it on until it clicks into place.



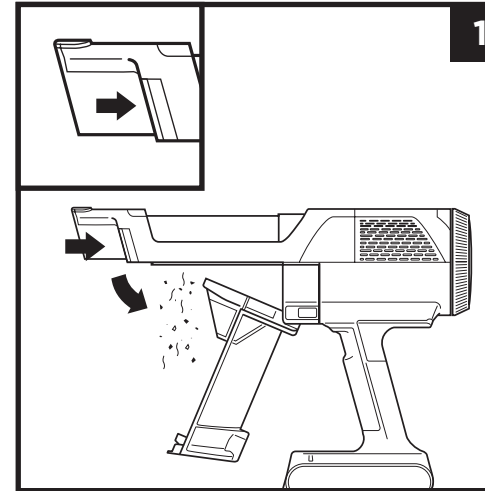
To use your flex wand feature, press the button on the back of the wand.



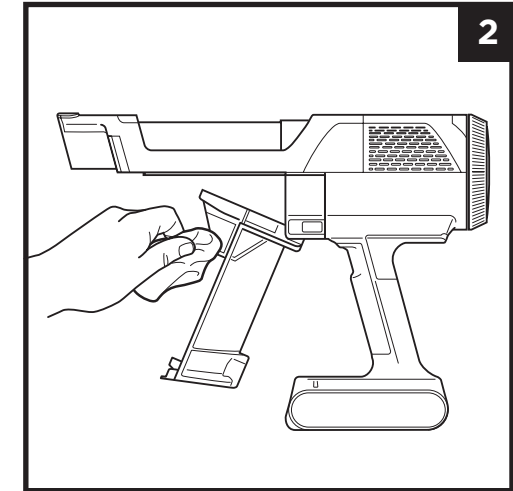
NOTE: All accessories are compatible with both the wand and the hand vacuum.

MAINTAINING YOUR VACUUM

EMPTYING THE HANDHELD VACUUM DUST CUP



1. To empty the handheld vacuum dust cup, turn off the power and hold the hand vac over the trash. Press the release button and the dust cup lid will drop open, releasing debris.

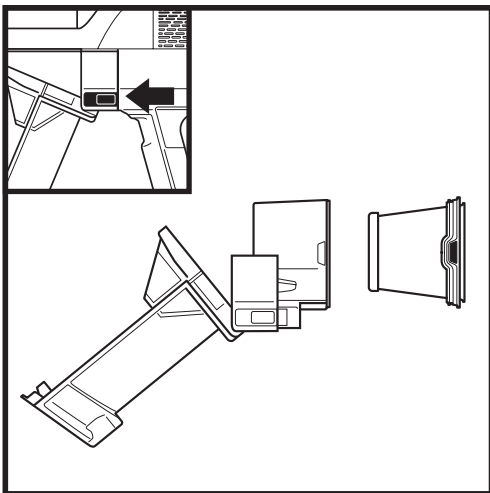


2. Wipe the screen inside the dust cup lightly with a dry cloth to remove dust and dirt.

NOTE: Do not wash any parts or accessories in a dishwasher.

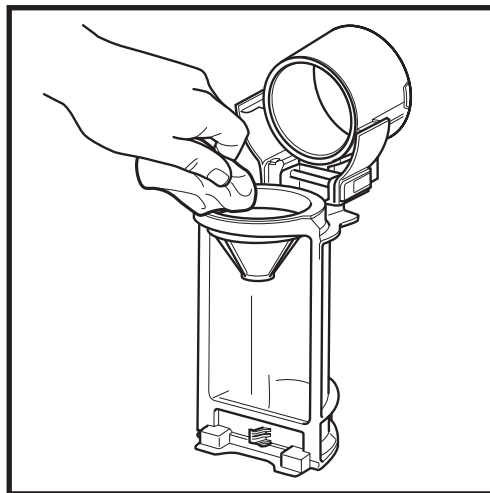
MAINTAINING YOUR VACUUM

CLEANING THE DUST CUP AND FILTERS



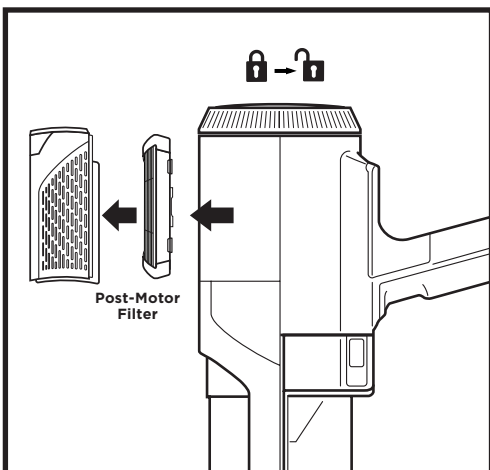
With the dust cup open and the power off, press both release buttons and slide the dust cup out of the hand vac.

Press the tabs on both sides of the filter housing and pull the filter out of the housing. To clean the filter, rinse it with water only and allow it to air-dry for at least 24 hours before reinstalling. To reinstall the filter, slide it back into the housing, then slide the housing back into place.



To deep-clean the dust cup, slide the release button until the lid opens completely. Wipe away any dust and debris with a dry cloth, then rinse it out with water. Use a damp cloth to remove any remaining debris. Allow the dust cup to air-dry completely for at least 24 hours before reinstalling it.

REMOVING THE HAND VAC HEPA FILTER



1. To access the post-motor filter, rotate the filter cover on the handheld vacuum to the unlocked position.
2. Pull off the filter cover and lift out the post-motor filter.
3. Reinsert the filter, then replace the cover and rotate it back to the locked position.

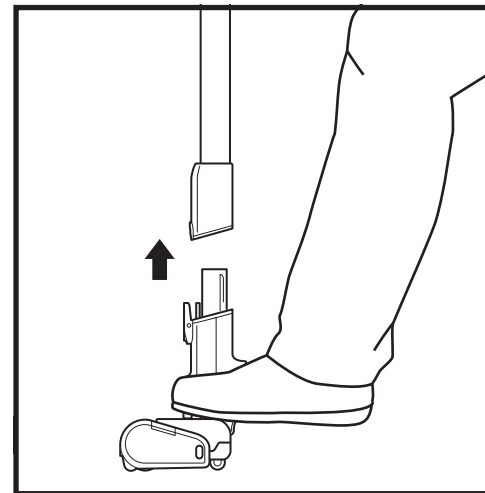
Regularly rinse and replace the filters to maintain your vacuum's suction power. To clean filters, rinse them with water only. **Allow all filters to air-dry completely for up to 48 hours before reinstalling to prevent liquid from being drawn into electric parts.**

Clean the pre-motor filters at least once a month and post-motor filter at least once a year. Tap off loose dirt between washes when needed. More frequent cleaning may sometimes be necessary with heavy use.

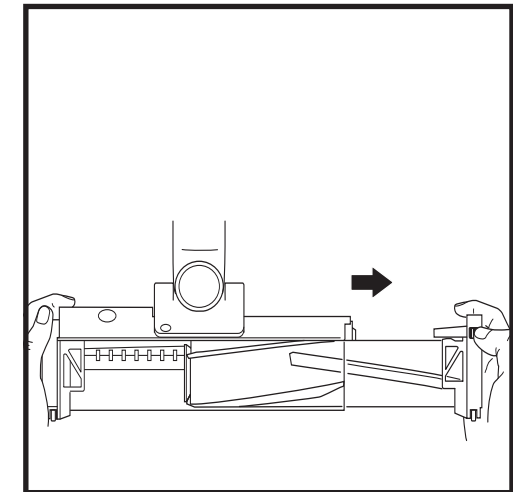
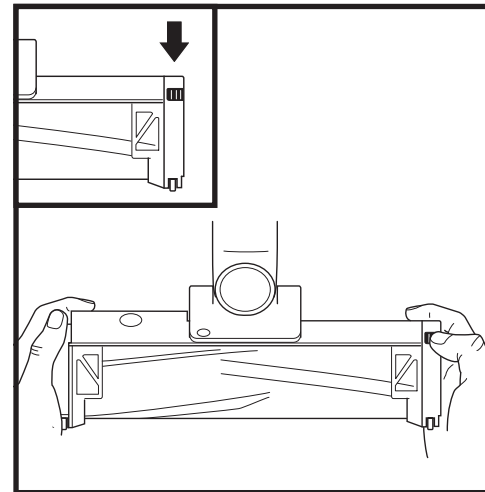
IMPORTANT: DO NOT use soap when cleaning the filters. Use water only. The vacuum will not have suction if the post-motor filter is not installed. Ensure that all filters are installed before using.

MAINTAINING YOUR VACUUM

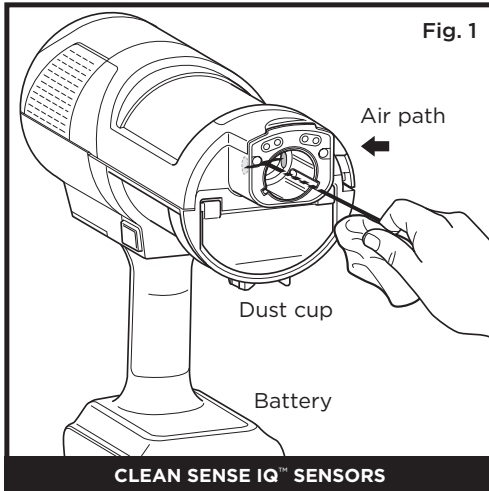
NOZZLE MAINTENANCE



1. Turn off the vacuum.
2. Press the nozzle release button to detach the nozzle from the wand.
3. Press the brushroll release button and slide the brushroll out of the nozzle.
4. Clear any blockages and remove any debris from the brushroll and floor nozzle.
5. Tap off loose debris and wipe the brushroll clean with a dry towel. Hand wash the brushroll if needed, using only water, and then let it air dry completely for at least 24 hours.
6. When the brushroll is dry, reinstall it into the nozzle by inserting it into the nozzle until it clicks.



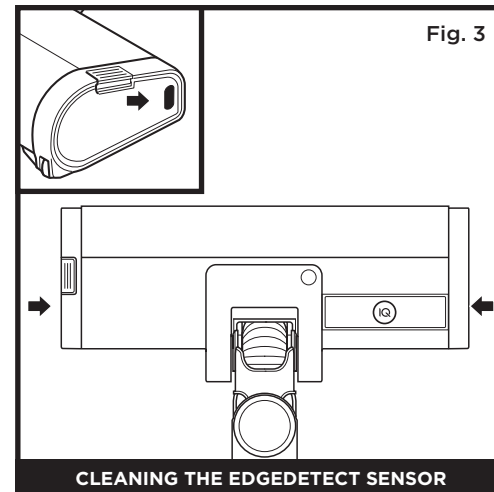
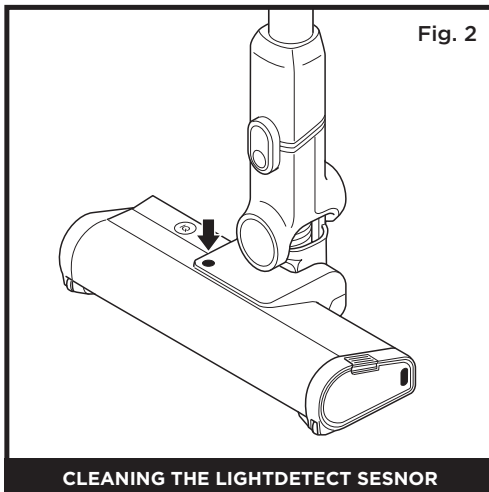
CLEANING THE SENSORS



Make sure to clean the IQ sensors regularly, as hair and other debris may build up and obstruct them. If the sensors are partially obstructed, Clean Sense IQ™ mode will not function as expected.

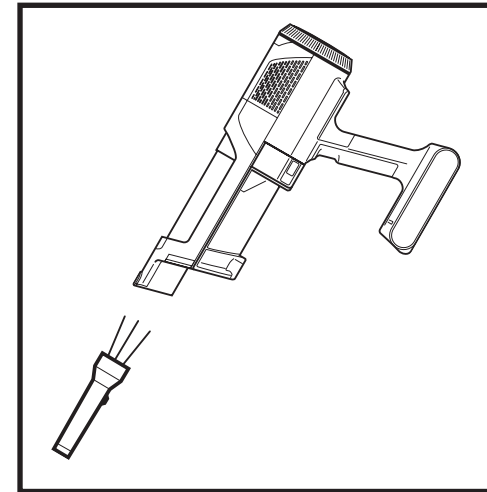
To clean the sensors (Fig. 1):

1. Turn off power and remove the floor nozzle.
2. Locate the DirtDetect Sensor in the nozzle of the hand vac (Fig. 1), the LightDetect Sensor on the top of the nozzle (Fig. 2), and the EdgeDetect sensor on the side of the nozzle (Fig. 3).
3. Gently wipe the sensors with a microfiber cloth and remove all hair and debris.
4. Reattach the floor nozzle to the rest of the unit and turn on power. Verify that the unit is functioning normally.



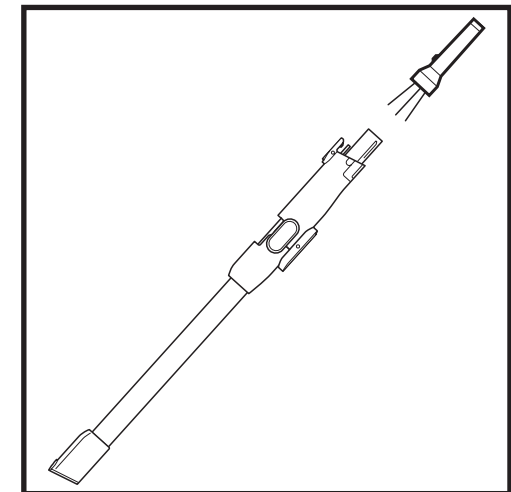
CHECKING FOR BLOCKAGES IN THE VACUUM

If you run over a hard or sharp object or notice a noise change while vacuuming, check for blockages or objects caught in the brushroll.



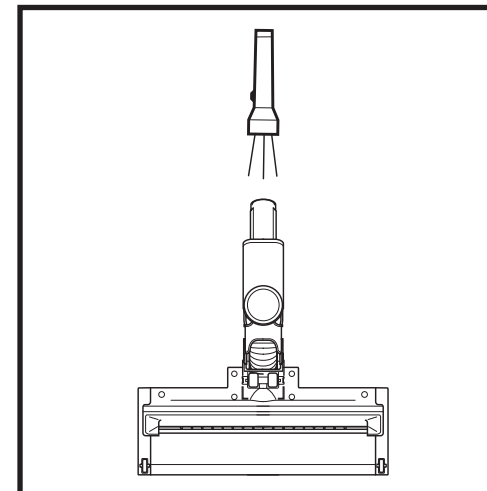
Checking for Blockages in the Hand Vacuum:

1. Turn off the vacuum.
2. Remove the hand vacuum from the wand.
3. Check all intake openings to the dust cup and remove any debris or blockages.



Checking for Blockages in the Wand:

1. Turn off the vacuum.
2. Detach the hand vacuum and floor nozzle from the wand.
3. Check both ends of the wand for blockages and debris.
4. Clear away any debris or blockages.



Checking for Blockages in the Floor Nozzle:

1. Turn off the vacuum.
2. Detach the wand from the floor nozzle.
3. Press the brushroll release button and slide the brushroll out of the nozzle.
4. Clear any blockages and release any debris from the brushroll and floor nozzle.
5. Slide the brushroll back into the nozzle, ensuring everything is lined up and in place.

MAINTAINING YOUR VACUUM

TROUBLESHOOTING

⚠ WARNING: To reduce the risk of shock and unintended operation, turn off power and remove the battery before servicing.

Vacuum is not picking up debris. No suction or light suction. Third indicator light on hand vacuum is solid yellow.

(Refer to Checking for Blockages section for more information.)

1. Dust cup may be full; empty dust cup.
2. Check floor nozzle for blockages; clear blockages if required.
3. Remove any string, carpet fibers, or hair that may be wrapped around the brushroll.
4. Check connection between hand vacuum and wand for blockages; clear blockages if required.
5. Check filters to see if they need cleaning. Follow instructions for rinsing and completely air-drying the filters before reinstalling them.

Vacuum lifts area rugs.

1. Make sure you are not engaging Boost mode. Take care when vacuuming area rugs or rugs with delicately sewn edges.
2. Turn off the unit to disengage from the carpet, then restart.

The brushroll in the floor nozzle doesn't spin.

1. Immediately turn off the vacuum. Remove any blockages before turning the vacuum back on. Make sure the hand vacuum is tilted back far enough for the brushroll to engage while in use.
2. If the floor nozzle has headlights and they are not illuminated, there is a connection issue between the hand vacuum, wand, and nozzle. Try detaching the parts, then reconnecting them.

Vacuum turns off on its own.

There are several possible reasons for the vacuum turning off on its own, including blockages, battery issues, and overheating. If vacuum turns off on its own, perform the following steps:

1. Turn on the vacuum and check the battery indicator lights on the hand vacuum. If recharging is needed, make sure vacuum power is off placing it on the charging dock.
2. Empty dust cup and clean filters (See the Cleaning the Dust Cup and Filter section).
3. Check wand, accessories, and inlet openings and remove any blockages.
4. Allow unit and battery to cool for at least 45 minutes, until they return to room temperature.
5. Press the On/Off switch to restart the vacuum.

Battery Indicator Lights on hand vacuum are flashing.

- Nozzle Ring Light flashes red (Fig. A): Nozzle clog.
(See the Maintaining Your Vacuum section.)

**Contact Customer Service at
0800-000-605 or sharkninja.tw**

if you experience any of the indications listed below:

- ECO and BOOST LEDs are flashing (Fig. B):
Overcurrent or short.
- All LEDs except ECO are flashing (Fig. C):
Motor is overheating.
- All LEDs except ECO and IQ are flashing
(Fig. D): Overspeed.
- All LEDs except BOOST and IQ are flashing
(Fig. E): Communication.
- IQ and BOOST LEDs are flashing (Fig. F): There
may be an electrical problem with the nozzle.
- IQ and UI RING are flashing (Fig. G): DirtDetect
Error. Wipe DirtDetect sensor.
- HEADLIGHTS and IQ LEDs are flashing (Fig. H):
Edge Detect Error.



Fig. A

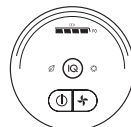


Fig. B

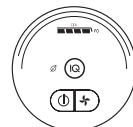


Fig. C

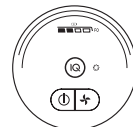


Fig. D

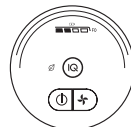


Fig. E

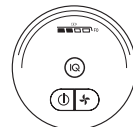


Fig. F



Fig. G

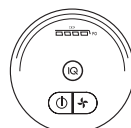
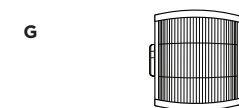
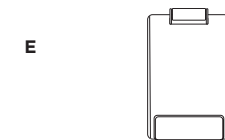
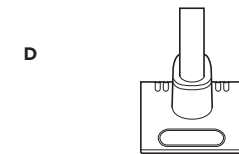
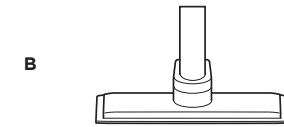
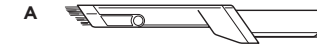


Fig. H

NOTE: If vacuum still does not operate properly, contact Customer Service at sharkninja.tw

REPLACEMENT PARTS AND ACCESSORIES

- A Duster Crevice Tool**
- B Wide Upholstery Tool**
- C Pet Multi-Tool**
- D Motorized Hand Tool**
- E Replacement Battery**
- F Hand Vac Pre-Motor Filter**
- G Hand Vac Post-Motor Filter**



NOTE: Not all accessories come with all units. Please see the enclosed Quick Start Guide for your unit's configuration. To order additional accessories, visit sharkninja.tw

ONE (1) YEAR LIMITED WARRANTY

The One (1) Year Limited Warranty applies to purchases made from authorized retailers of **OSONOVA PRIVATE LIMITED TAIWAN BRANCH**. Warranty coverage applies to the original owner and to the original product only and is not transferable.

SharkNinja warrants that the unit shall be free from defects in material and workmanship for a period of one (1) year from the date of purchase when it is used under normal household conditions and maintained according to the requirements outlined in the Owner's Guide, subject to the following conditions and exclusions:

What is covered by this warranty?

1. The original unit and/or non-wearable components deemed defective, in SharkNinja's sole discretion, will be repaired or replaced up to one (1) year from the original purchase date.
2. In the event a replacement unit is issued, the warranty coverage ends six (6) months following the receipt date of the replacement unit or the remainder of the existing warranty, whichever is later. SharkNinja reserves the right to replace the unit with one of equal or greater value.

What is not covered by this warranty?

1. Normal wear and tear of wearable parts (such as foam filters, HEPA filters, pads, etc.), which require regular maintenance and/or replacement to ensure the proper functioning of your unit, are not covered by this warranty. Replacement parts are available for purchase at **sharkninja.tw**.
2. Any unit that has been tampered with or used for commercial purposes.
3. Damage caused by misuse (e.g., vacuuming up water or other liquids), abuse, negligent handling, failure to perform required maintenance (e.g., not cleaning the filters or not removing debris from the brushroll), or damage due to mishandling in transit.
4. Consequential and incidental damages.
5. Defects caused by repair persons not authorized by SharkNinja. These defects include damages caused in the process of shipping, altering, or repairing the SharkNinja product (or any of its parts) when the repair is performed by a repair person not authorized by SharkNinja.

How to get service

If your appliance fails to operate properly while in use under normal household conditions within the warranty period, visit **sharkninja.tw** for product care and maintenance self-help. Our Customer Service Specialists are also available at **0800-000-605** to assist with product support and warranty service options, including the possibility of upgrading to our VIP warranty service options for select product categories. We also ask that you register your product online at **sharkninja.tw** and have the product on hand when you call, so we may better assist you.

How to initiate a warranty claim

You must call **0800-000-605** to initiate a warranty claim. In order to better assist you please register your product prior to calling and have your product with you at the time of your call. You will need the receipt as proof of purchase. A Customer Service Specialist will provide you with return and packing instruction information. We also ask that you register your product online at **sharkninja.tw** and have the product on hand when you call, so we may better assist you.

ONE (1) YEAR LIMITED BATTERY WARRANTY

The One (1) Year VIP Limited Warranty applies to purchases made from authorized retailers of **OSONOVA PRIVATE LIMITED TAIWAN BRANCH**. Warranty coverage applies to the original owner and to the original product only and is not transferable.

SharkNinja warrants that the battery shall be free from defects in material and workmanship for a period of one (1) year from the date of purchase when it is used under normal household conditions and maintained according to the requirements outlined in the Owner's Guide, subject to the following conditions and exclusions:

What is covered by this warranty?

1. The original battery deemed defective, in SharkNinja's sole discretion, will be replaced up to one (1) year from the original purchase date.
2. In the event a replacement battery is issued, the warranty coverage ends six (6) months following the receipt date of the replacement battery or the remainder of the existing warranty, whichever is later. SharkNinja reserves the right to replace the unit with one of equal or greater value.

What is not covered by this warranty?

1. Normal wear and tear of the battery, which requires optimal temperature storage and operation to ensure its proper functioning. Replacement batteries are available for purchase at **sharkninja.tw**.
2. A battery that has been tampered with or used for commercial purposes.
3. Damage caused by misuse (e.g., exposing battery to liquids or extreme hot and/or cold temperatures), abuse, negligent handling, failure to perform required maintenance, or damage due to mishandling in transit.
4. Consequential and incidental damages.
5. Defects caused by repair persons not authorized by SharkNinja. These defects include damages caused in the process of shipping, altering, or repairing the SharkNinja product (or any of its parts) when the repair is performed by a repair person not authorized by SharkNinja.

How to get service

If your battery fails to operate properly while in use under normal household conditions within the warranty period, visit **sharkninja.tw** for product care and maintenance self-help. Our Customer Service Specialists are also available at **0800-000-605** to assist with product support and warranty service options. So we may better assist you, please register your product online at **sharkninja.tw** and have the product on hand when you call.

How to initiate a warranty claim

You must call **0800-000-605** to initiate a warranty claim. You will need the receipt as proof of purchase. We also ask that you register your product online at **sharkninja.tw** and have the product on hand when you call, so we may better assist you. A Customer Service Specialist will provide you with return and packing instruction information when you call.

重要安全說明

僅限家庭使用 • 使用本吸塵器前請先閱讀所有說明。

如果充電線插頭無法完全插入插座，請翻轉插頭再試一次。
若仍無法插入，請聯絡合格的電工。請勿強行插入插座或改裝插頭以插入插座。

為了降低觸電或意外運作的風險，維修前請先關閉電源並取出電池。



警告

為了降低火災、觸電、受傷或財產損失的風險，請注意以下事項：

地板吸頭、延長管及手持吸塵器內含電源：

1. 本吸塵器由電動吸頭、延長管及手持吸塵器組成。這些元件包含電力連接、電線及活動零件，可能對使用者造成風險。
2. 每次使用前，請仔細檢查所有零件是否有任何損壞。若發現有零件受損，請停止使用。
3. 僅使用相同規格的替換零件。
4. 本吸塵器不含可自行維修的零件。
5. 僅按照本手冊中的說明使用本產品。
請勿將本吸塵器用於本手冊未提及的用途。
6. 除了濾網與集塵桶外，**請勿**將吸塵器的任何零件浸入水中或其他液體中。
7. 請將本設備及其電線放在兒童無法觸及的地方。
請勿讓兒童使用本設備。**請勿**將本設備作為玩具使用。在兒童附近使用時需嚴密監督。

一般使用

8. 身心感官能力受限或缺乏相關經驗或知識者，可在獲得適當監督或指導安全使用本設備之方式，並瞭解相關風險後，使用本設備。兒童不得清潔或維護本產品。

9. 在連接或斷開電源線、電動吸頭、充電器、電池或其他電力或機械零件前，請務必關閉吸塵器電源。
10. **請勿**用潮濕的手接觸插頭或吸塵器。
11. **請勿**在未安裝集塵桶、濾網及毛刷滾輪的情況下使用吸塵器。
12. 僅使用 Shark™ 品牌的濾網及配件。
13. **請勿**將任何異物放入吸頭或配件開口。**請勿**在任何開口被堵塞的情況下使用，應保持開口無灰塵、棉絮、頭髮及其他可能阻礙氣流的物質。
14. **請勿**在吸頭或配件氣流受阻的情況下使用。若氣流路徑或電動地板吸頭阻塞，請關閉吸塵器電源，並清除所有堵塞物後再重新啟動。
15. 請將吸頭及所有吸塵口遠離頭髮、臉部、手指、赤腳或寬鬆衣物。
16. **請勿**在吸塵器無法正常運作、摔落、受損、長期放置戶外或掉入水中後繼續使用。
17. 清理樓梯時請特別小心。
18. 電源開啟時，**請勿**讓吸塵器處於無人看管的狀態。
19. 電源開啟時，**請勿**將吸塵器靜置於地毯表面。

20. **請勿**將吸塵器放置在不穩固的表面（如椅子或桌子）上。
21. **請勿**用於吸取以下物質：
 - a) 液體
 - b) 大型物件
 - c) 堅硬或尖銳物品（如玻璃、釘子、螺絲或硬幣）
 - d) 大量粉塵（包括石膏粉、壁爐灰燼或餘燼）。
請勿將本產品用作電動工具的集塵附件。
 - e) 燃燒或冒煙物件（如熱煤炭、菸蒂或火柴）
 - f) 易燃或可燃物質（如打火機油、汽油或煤油）
 - g) 有毒物質（如含氯漂白劑、氨水或排水管清潔劑）
22. **請勿**在下列區域中使用：
 - a) 光線不足的區域
 - b) 潮濕或積水的表面
 - c) 戶外區域
 - d) 封閉空間中，可能存在爆炸性或有毒氣體、蒸氣的場所（如打火機油、汽油、煤油、油漆、稀釋劑、防蛀劑或易燃粉塵）
23. 插拔充電器前請先關閉吸塵器。
24. 在進行調整、清潔、維護或故障排除前，請先關閉吸塵器。
25. 在清潔或例行維護期間，僅可剪除纏繞在毛刷滾輪上的頭髮、纖維或線材，**請勿**剪除其他物品。
26. 等候所有濾網皆完全晾乾後再裝回吸塵器內，以防止液體進入電力零件。
27. **請勿**自行修改或嘗試修理吸塵器或電池，除非本手冊另有說明。
請勿使用已修改或損壞的電池或吸塵器。已受損或修改的電池可能會出現不可預測的行為，因而引起火災、爆炸或受傷的風險。
請勿透過拉扯電源線來拔除插頭。若要拔除插頭，請握住插頭，而非電源線。
28. 拔除插頭前請先關閉所有控制開關。

電池組

29. 電池提供吸塵器的電源。請仔細閱讀並遵循所有充電說明。
30. 為防止意外啟動，在搬運或提起吸塵器前，請確保已關閉吸塵器電源。
請勿在手指置於電源開關的情況下搬運本設備。
31. 只可使用 Shark™ 電源供應器 DK18-180080HS-J。使用不正確的充電器可能導致無法充電及/或出現不安全狀況。
32. 請僅搭配 Shark™ 電池組 XPBTR430SLEU 使用。
33. 請將電池遠離所有金屬物件，如迴紋針、硬幣、鑰匙、釘子或螺絲。電池端子短路會增加火災或燒傷風險。
34. 在不當使用的狀況下，電池可能會釋出液體。請避免接觸此液體，因其可能引起皮膚刺激或灼傷。若不慎接觸，請立即以清水沖洗。若液體接觸到眼睛，請立即尋求醫療協助。
35. 為維持長久的電池壽命，**請勿**將電池存放於低於 3°C (37.4°F) 或高於 40°C (104°F) 的環境中。
36. **請勿**在低於 5°C (40°F) 或高於 40°C (104°F) 的溫度下為電池充電。
37. 請將本設備存放於室內。**請勿**在低於 3°C (37.4°F) 的環境中使用或存放本產品。操作前，請確保本設備處於室溫狀態。
38. **請勿**將電池暴露於火源或超過 130°C (265°F) 的高溫環境，以免造成爆炸。

請妥善保存此說明

組件

1. 將**延長管**滑入**地板吸頭**的接口，直到發出卡嗒聲後固定到位。
2. 將**手持吸塵器**吸頭開口對準延長管頂端，將其滑入直到發出卡嗒聲後固定到位。
3. 確保**充電座底板**正面朝上。將**充電支架**滑入充電座背面的插槽，直到聽到「喀」一聲。

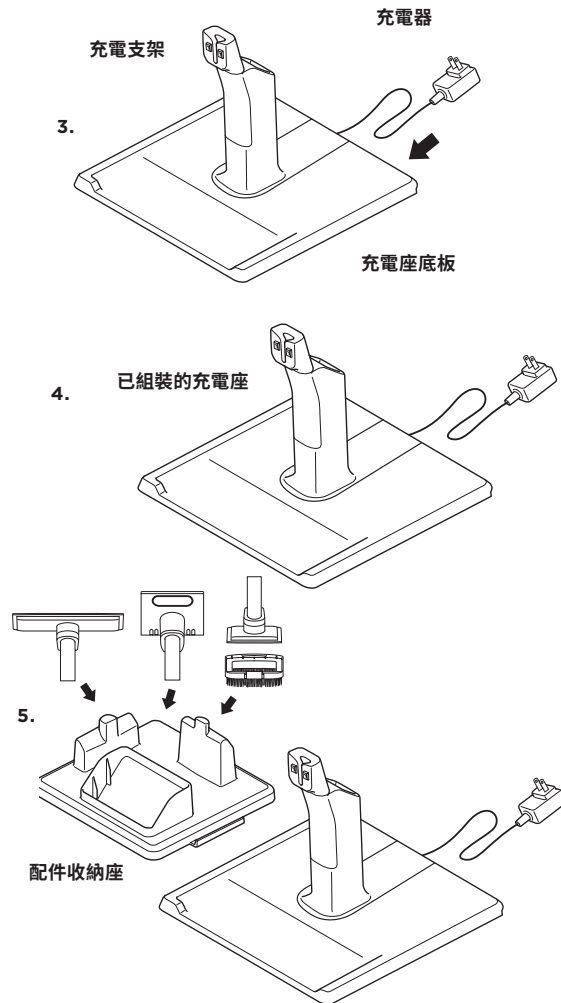
4. 將充電座放在靠近牆壁插座的地板上。將**充電器**插入插座，然後將電源線連接到充電支架背面的連接埠。
5. 將配件 收納座安裝在底座的左側。將手持電動吸頭、家飾布料吸頭和寵物多功能吸頭放置在配件收納座上。將窄縫除塵吸頭放置在充電支架的背面以供收納。

為確保正常運作，請確認所有元件已完全連接並發出卡嗒聲後固定到位。

手持吸塵器

可調式延長管

Ceres Lite
地板吸頭



注意：充電支架安裝完成後，將無法再拆卸。

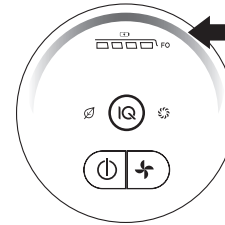
鋰電池

首次使用前，請將電池完全充電。完全充電約需 4.5 小時。

每顆電池完全充電後的運行時間

在完全充電電的情況下，裝置的運行時間可達 40 分鐘。請造訪 sharkninja.tw 以瞭解更多資訊。

LED 電池電力與充電指示燈



充電中



LED 指示燈在電量 0-75% 時會閃爍黃燈。



LED 指示燈在電量 75%-100% 時會閃爍綠燈。



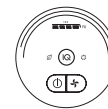
白色 LED 指示燈：表示電池已完全充電。

注意：完全充電約需 4.5 小時。

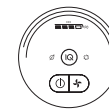
其他注意事項

1. 電池完全充電後，LED 指示燈會熄滅。
2. 連接充電器時，裝置無法開啟電源。

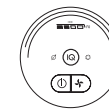
使用中



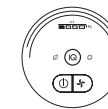
完全
充電



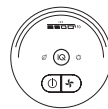
中等
電量



低
電量



即將
沒電



完全
沒電

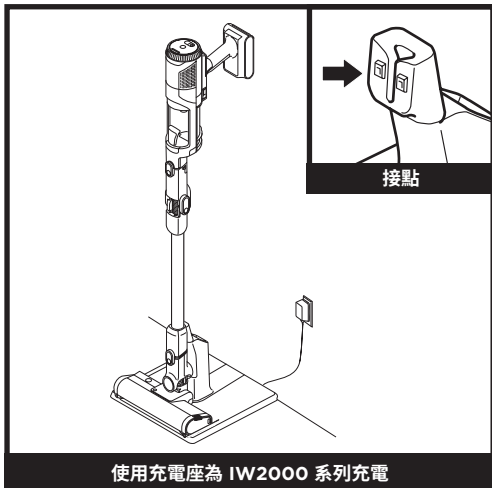
鋰電池回收

當 Shark™ 鋰電池需要更換時，請根據當地法規或條例處理或回收這些電池。在某些地區，將用過的鋰電池丟進垃圾桶或都市固體廢物處理是不合法的。請將使用過的電池交回授權的回收中心或零售商進行回收。請聯絡當地的回收中心瞭解已用過電池的棄置地點。

注意：如同所有鋰電池，Shark™ 電池的容量會隨著時間經過，自然地從全新電池的 100% 電量自然衰減。

充電中

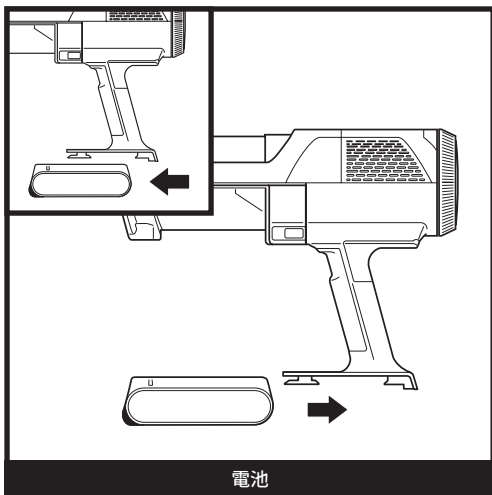
在儲存模式下充電



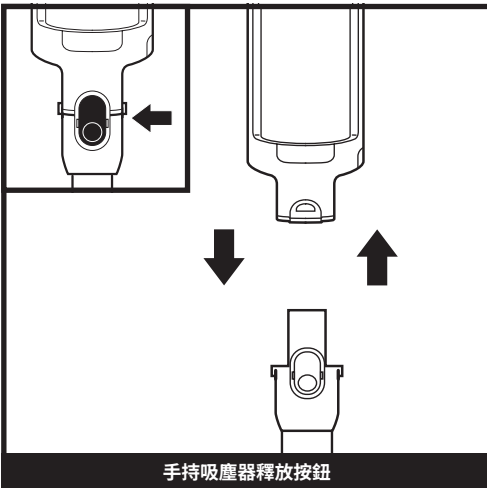
將裝置放在充電座上進行充電。請確保延長管上的接點與充電座上的接點對齊。

當充電完成並準備再次使用吸塵器時，將其從充電座上拿起。

移除電池



若要從手持吸塵器中移除電池，請按下電池蓋上的釋放卡扣，並將電池滑出。重新安裝時，將電池滑入手柄的電池槽中，直到發出卡嗒聲後固定到位。



若要從延長管上卸下手持吸塵器，請按下手持吸塵器前端與延長管連接處的門鎖釋放按鈕，然後取下手持吸塵器。

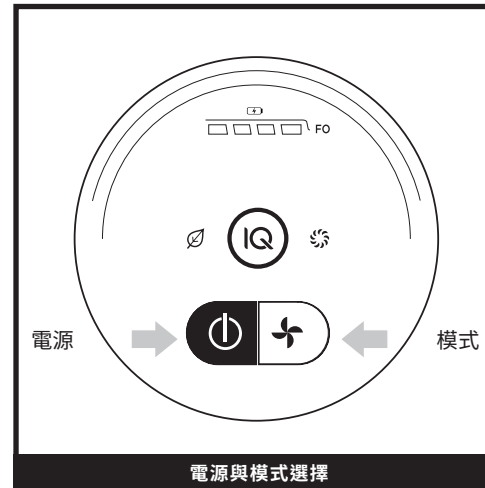
若要將手持吸塵器重新連接到延長管，請將吸頭開口對準延長管頂端，將其滑入直到發出卡嗒聲後固定到位。

注意：當裝置正確放置於充電座時，手持吸塵器上的充電指示燈會閃爍，表示充電已開始。充電完成時，所有三個指示燈將會持續亮起 5 分鐘，然後熄滅。

注意：主裝置在出廠時已經有部分電量。為了達到最佳運行時間，第一次使用前請完全充電（約 4.5 小時）。讓裝置保持插入充電座並不會損害電池壽命。

充電中

控制和清潔模式



按下手柄上的開關按鈕即可開啟電源。再次按下按鈕即可關閉電源。若要在節能、IQ 和強效模式之間切換，請按下模式選擇按鈕。

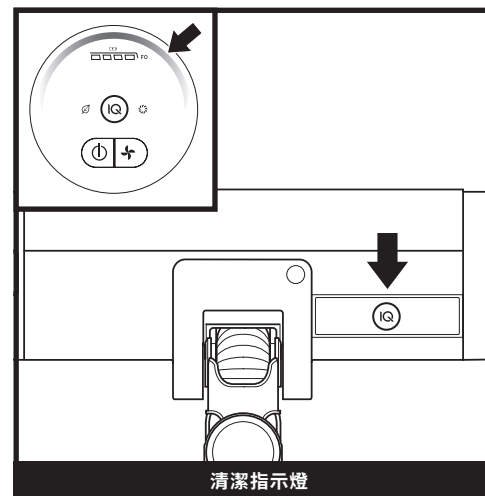
Clean Sense IQ™ 功能

灰塵偵測：識別清潔區域的灰塵量，自動增強吸力，以清除隱藏的灰塵與污垢。

地板偵測：毛刷滾輪可感應地板表面變化，自動調整以最佳化清潔效果。

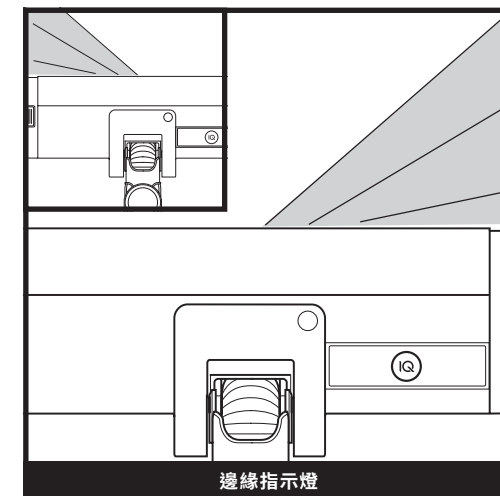
邊緣偵測：動態偵測邊緣與角落，最大化吸力以清除頑固髒污。

光源偵測：感應低光環境，自動照亮黑暗區域，以便發現灰塵和碎屑。



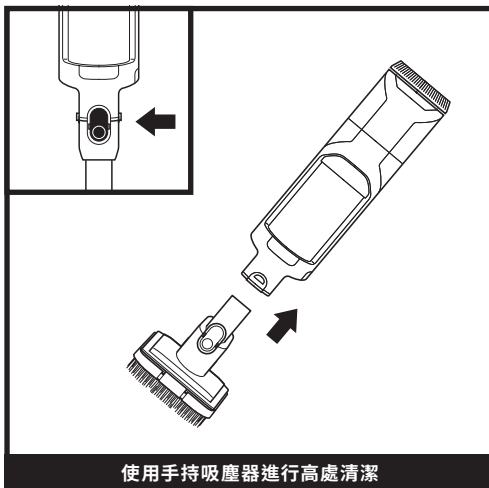
清潔指示燈可視覺化顯示地板何時清潔乾淨。當裝置偵測到大量碎屑時，吸力將自動增強以提供更強的清潔力。

當碎屑被清理乾淨後，吸力將降低回到基礎水準。為獲得最佳效果，請繼續清潔直到指示燈返回最低等級後，再移動到下一個區域。



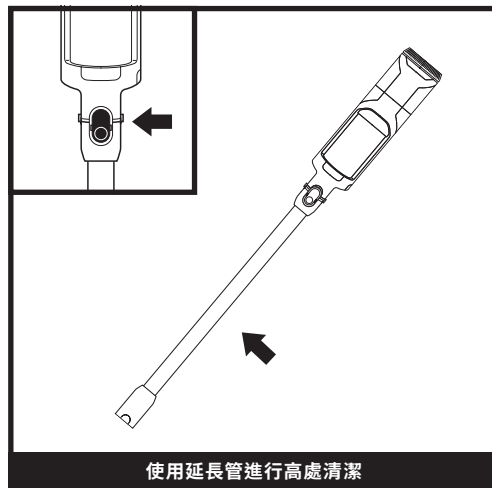
偵測到邊緣時，前燈將照亮該區域，以集中清潔目標碎屑。

使用您的吸塵器



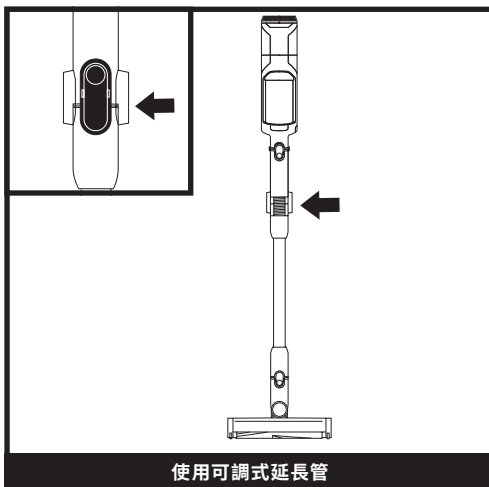
使用手持吸塵器進行高處清潔

拆下手持吸塵器清潔高處區域。按下手持吸塵器前端與延長管連接處的門鎖釋放按鈕，然後取下手持吸塵器。若要安裝配件至手持吸塵器，請將配件滑入吸頭開口。若要卸下配件，按下手持吸塵器前端與延長管連接處的門鎖釋放按鈕，然後滑出配件。



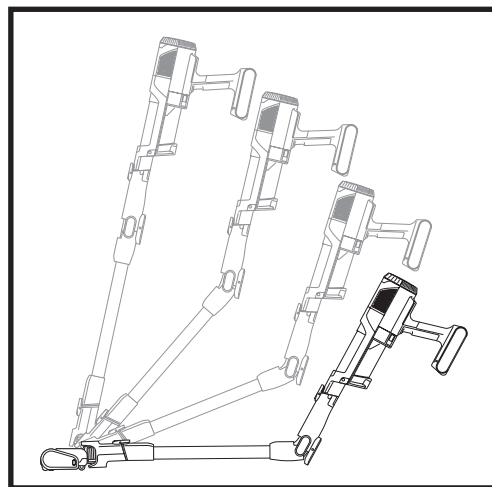
使用延長管進行高處清潔

若要從延長管上卸下地板吸頭，請踩住吸頭，同時按下延長管底部的吸頭釋放按鈕。提起延長管將其取下。若要重新安裝延長管，請將其對準地板吸頭的頸部，然後將其滑入直到發出卡嗒聲後固定到位。



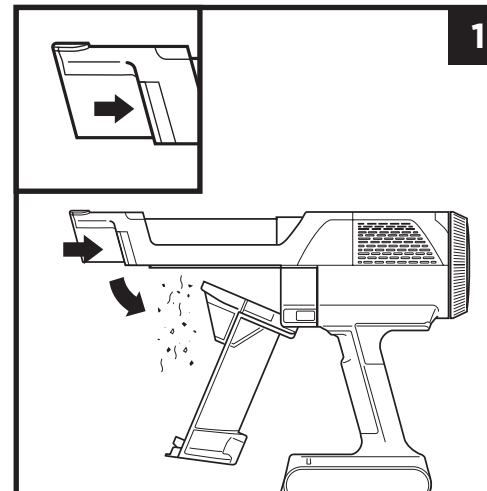
使用可調式延長管

若要使用可調式延長管功能，請按下延長管背部的按鈕。



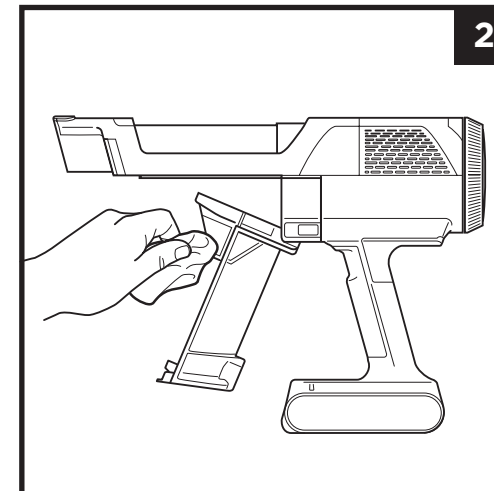
保養您的吸塵器

清空手持吸塵器的集塵桶



1

1. 若要清空手持吸塵器的集塵桶，請關閉電源並將手持吸塵器放在垃圾桶上方。按下釋放按鈕，集塵桶蓋將打開，讓碎屑掉出來。



2

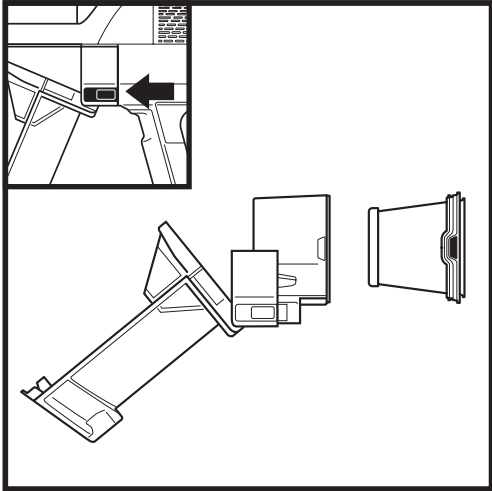
2. 用乾布輕輕擦拭集塵桶內部的濾網，清除灰塵與髒污。

注意：所有配件皆可與延長管或手持吸塵器搭配使用。

注意：請勿將任何零件或配件放入洗碗機清洗。

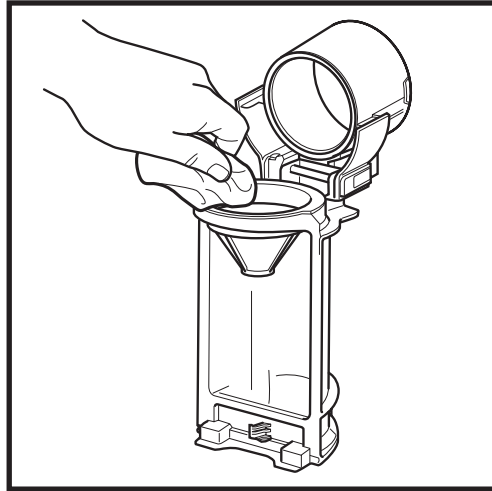
保養您的吸塵器

清潔集塵桶和濾網



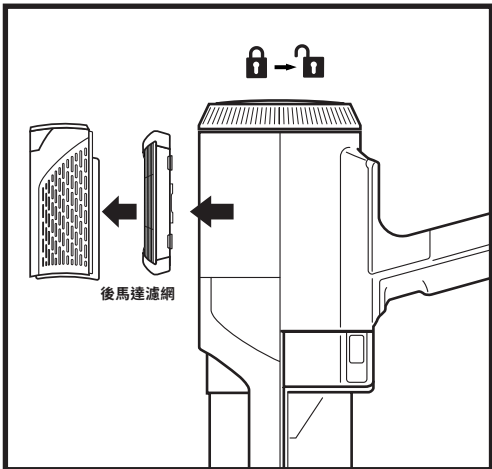
在集塵桶開啟且電源關閉的情況下，按下兩側的按鈕，然後將集塵桶從手持吸塵器中滑出。

按下濾網外殼兩側的卡扣，取出濾網。若要清洗濾網，請僅使用清水清洗濾網，確認完全晾乾（至少24小時）後再重新安裝。若要重新安裝濾網，請將濾網滑回外殼內，然後將外殼推回原位。



若要深度清潔集塵桶，請滑動釋放按鈕，直到蓋子完全開啟。使用乾布擦除灰塵與碎屑，然後用水沖洗乾淨。使用濕布擦除任何殘留的碎屑。重新安裝前，請確認集塵桶完全晾乾至少 24 小時。

移除手持吸塵器 HEPA 濾網



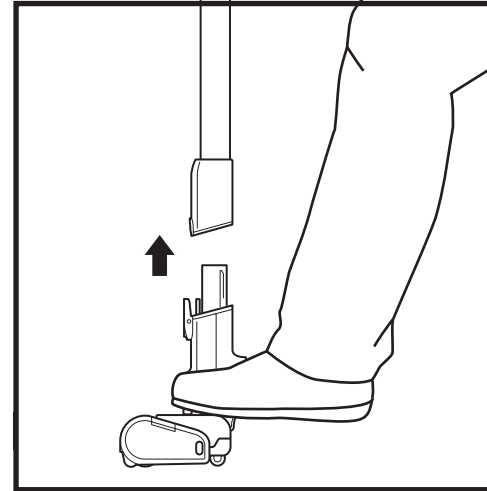
1. 若要取出馬達後置濾網，請旋轉手持吸塵器上的濾網蓋，將其轉至解鎖位置。
2. 拆下濾網蓋，然後取出馬達後置濾網。
3. 重新裝回濾網，然後裝回濾網蓋，並旋轉回鎖定位置。

請定期沖洗與更換濾網，以維持吸塵器的吸力。清潔濾網時，請僅使用清水沖洗。重新安裝所有濾網前，請完全晾乾至少 48 小時，以避免液體進入電力零件。請至少每月清潔一次馬達前置濾網，並每年至少清潔一次馬達後置濾網。如有需要，可在兩次清洗之間輕拍濾網鬆散的灰塵。若頻繁使用吸塵器，可能需要更頻繁地清潔濾網。

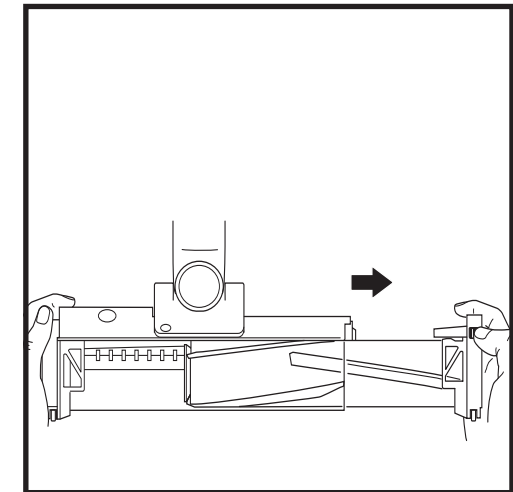
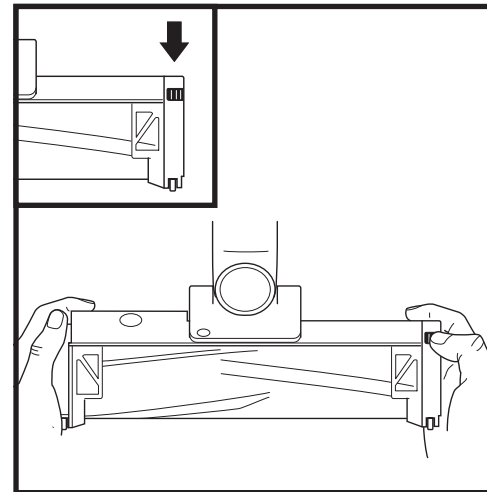
重要事項：請勿使用肥皂清潔濾網。只能用清水沖洗。若未安裝濾網，吸塵器將無法產生吸力。使用前，請確保所有濾網均已正確安裝。

保養您的吸塵器

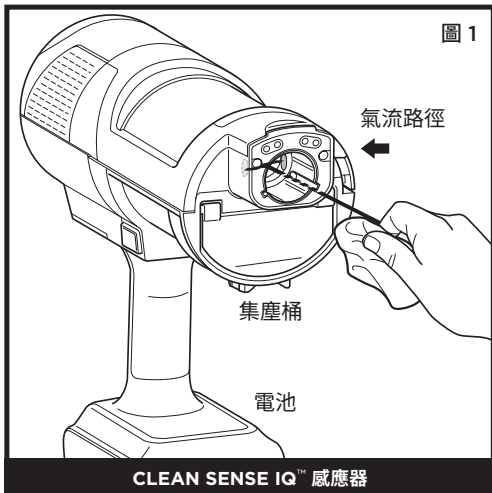
吸頭維護



1. 關閉吸塵器。
2. 按下吸頭釋放按鈕，從延長管上拆下吸頭。
3. 按下毛刷滾輪釋放按鈕，然後將毛刷滾輪從吸頭中滑出。
4. 清除任何堵塞物，並將毛刷滾輪和地板吸頭上的碎屑移除。
5. 輕拍鬆散的碎屑，並用乾毛巾將毛刷滾輪擦拭乾淨。如有需要，可使用清水手洗毛刷滾輪，然後完全晾乾至少 24 小時。
6. 當毛刷滾輪完全乾燥後，將其重新安裝至吸頭中，確保插入吸頭直到發出卡嗒聲後固定到位。



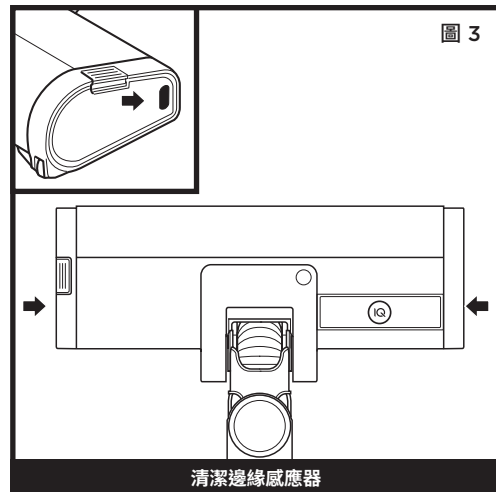
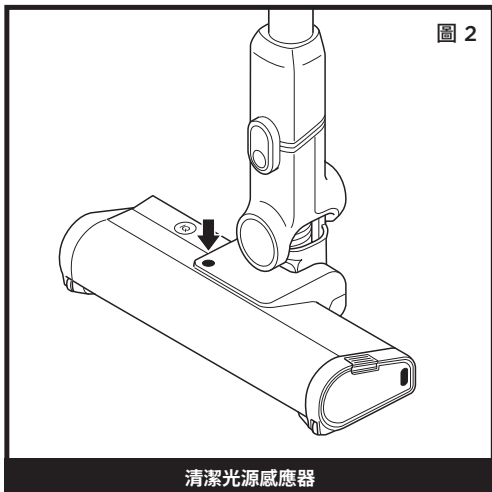
清潔感應器



請務必定期清潔 IQ 感應器，因為毛髮與其他碎可能會累積並阻塞感應器。如果感應器部分被阻擋，Clean Sense IQ™ 模式將無法正常運作。

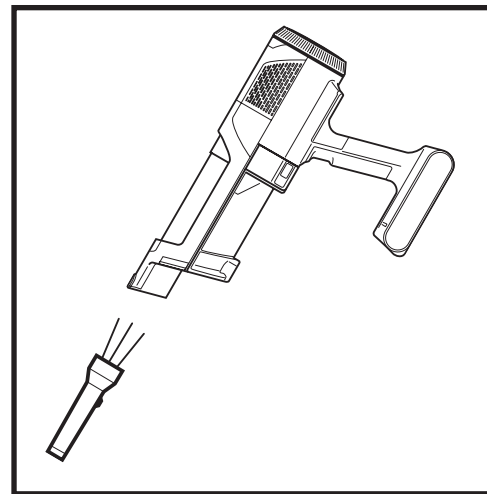
若要清潔感應器 (圖 1)：

1. 關閉電源並移除地板吸頭。
2. 找到手持吸塵器吸頭內的灰塵感應器 (圖 1)、吸頭頂部的光源感應器 (圖 2) 以及吸頭側面的邊緣感應器 (圖 3)。
3. 使用超細纖維布輕輕擦拭感應器，並清除所有毛髮與碎屑。
4. 重新安裝地板吸頭至裝置，然後開啟電源。確認裝置是否運作正常。



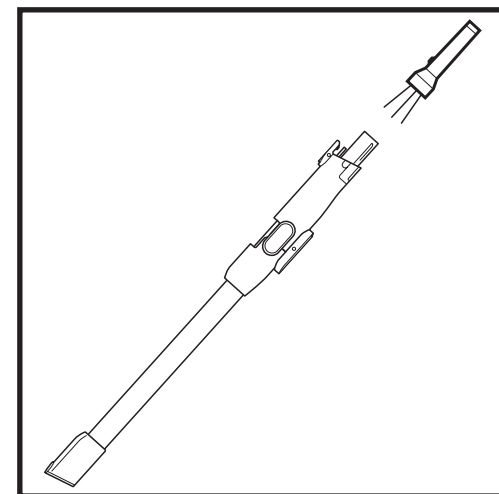
檢查吸塵器內的堵塞情況

如果吸塵時捲入硬物或尖銳物品，或聽到異常噪音，請檢查是否有堵塞或物體卡在毛刷滾輪中。



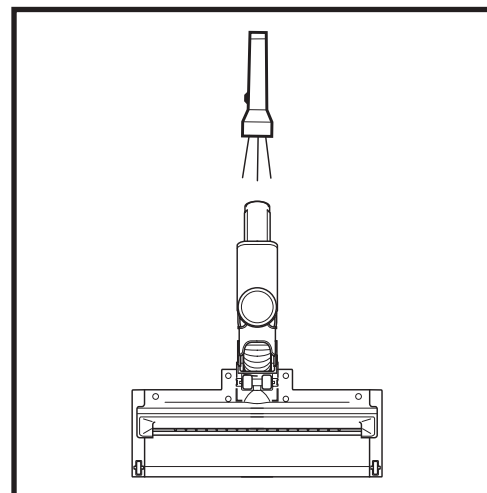
檢查手持吸塵器內的堵塞情況：

1. 關閉吸塵器。
2. 從延長管上拆下手持吸塵器。
3. 檢查通往集塵桶的所有進氣口，並清除任何碎屑或堵塞物。



檢查延長管內的堵塞情況：

1. 關閉吸塵器。
2. 從延長管上拆下手持吸塵器和地板吸頭。
3. 檢查延長管兩端是否有堵塞或碎屑。
4. 清除任何碎屑或堵塞物。



檢查地板吸頭內的堵塞情況：

1. 關閉吸塵器。
2. 從地板吸頭上拆下延長管。
3. 按下毛刷滾輪釋放按鈕，然後將毛刷滾輪從吸頭中滑出。
4. 清除任何堵塞物，並移除毛刷滾輪和地板吸頭上的碎屑。
5. 將毛刷滾輪滑回吸頭，確保所有零件正確對齊並固定到位。

保養您的吸塵器

故障排除

警告：為了降低觸電或意外運作的風險，維修前請先關閉電源並取出電池。

吸塵器無法吸入碎屑。沒有吸力或吸力不足。手持吸塵器上的第三個指示燈恆亮黃燈。
(請參閱「檢查是否有堵塞」一節瞭解更多資訊。)

1. 集塵桶可能已滿；請清空集塵桶。
2. 檢查地板吸頭是否有堵塞；如有需要，請清除堵塞物。
3. 移除纏繞在毛刷滾輪上的線材、地毯纖維或頭髮。
4. 檢查手持吸塵器與延長管之間的連接處是否有堵塞；如有需要，請清除堵塞物。
5. 檢查濾網是否需要清潔。請依照說明清洗濾網，並等待完全晾乾後再重新安裝。

吸塵器吸起小地毯。

1. 請確認您未啟用強效模式。在小地毯或邊緣精細縫製的地毯上吸塵時，請務必小心。
2. 關閉裝置以鬆開地毯，然後重新啟動。

地板吸頭上的毛刷滾輪不會轉動。

1. 立即關閉吸塵器。重新開啟吸塵器前，請先清除任何堵塞物。使用時，請確保手持吸塵器後傾至足夠角度以啟動毛刷滾輪。
2. 如果地板吸頭配有前照燈但未亮起，則表示手持吸塵器、延長管和吸頭之間的連接有問題。請嘗試拆下零件，然後重新連接。

吸塵器自行關閉。

吸塵器自行關閉的原因可能包括堵塞、電池問題或過熱。若吸塵器自行關閉，請按照以下步驟操作：

1. 開啟吸塵器並檢查手持吸塵器上的電池指示燈。若需要充電，請確保吸塵器電源已關閉，然後將其放置在充電座上。
2. 清空集塵桶並清潔濾網（請參閱「清潔集塵桶和濾網」一節）。
3. 檢查延長管、配件和進氣口是否有堵塞，並清除任何堵塞物。
4. 讓裝置和電池冷卻至少 45 分鐘，直到恢復至室溫。
5. 按下開啟/關閉開關以重新啟動吸塵器。

手持吸塵器上的指示燈閃爍。

- 吸頭環狀指示燈閃爍紅燈（圖 A）：吸頭阻塞。
(請參閱「保養您的吸塵器」一節。)

如果您遇到下列任何指示燈情況，請致電 0800-000-605 聯絡客服中心或造訪 sharkninja.tw：

- 節能和強效指示燈閃爍（圖 B）：過電流或短路。
- 除節能外，強效 LED 指示燈均閃爍（圖 C）：馬達過熱。
- 除節能和 IQ 外，所有 LED 指示燈均閃爍（圖 D）：超速運行。
- 除強效和 IQ 外，所有 LED 指示燈均閃爍（圖 E）：通訊。
- IQ 和強效指示燈閃爍（圖 F）：吸頭可能存在電力問題。
- IQ 和 UI 環形燈閃爍（圖 G）：灰塵偵測 錯誤。
- 請擦拭灰塵偵測感應器。
- 前照燈和 IQ 指示燈閃爍（圖 H）：邊緣偵測錯誤。

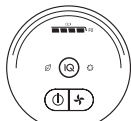


圖 A

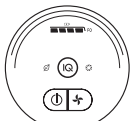


圖 B

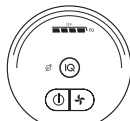


圖 C

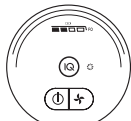


圖 D



圖 E

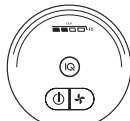


圖 F



圖 G

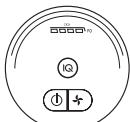


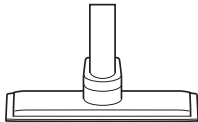
圖 H

替換零件與配件

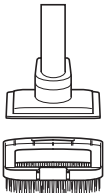
- Ⓐ 窄縫除塵吸頭
- Ⓑ 家飾布料吸頭
- Ⓒ 寵物多功能吸頭
- Ⓓ 手持電動吸頭
- Ⓔ 替換電池
- Ⓕ 吸塵器馬達前置濾網
- Ⓖ 吸塵器馬達後置濾網



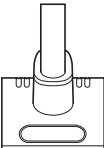
Ⓑ



Ⓒ



Ⓓ



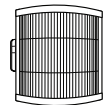
Ⓔ



Ⓕ



Ⓖ



注意：若吸塵器仍無法正常運作，請前往 sharkninja.tw 聯絡客服中心

注意：並非所有機型都隨附所有配件。請參閱隨附的《快速入門指南》以瞭解您的裝置配置。若需訂購額外配件，請造訪 sharkninja.tw

一 (1) 年有限保固

此一 (1) 年有限保固適用於從**新加坡商維諾瓦股份有限公司臺灣分公司授權零售商購買的產品**。保固範圍僅適用於原購買人及原產品，且不得轉讓。

SharkNinja 保證在正常家庭使用條件下，並依照《使用者指南》中規定的要求進行保養的情況下，本產品自購買日起一 (1) 年內不會出現材料或工藝上的缺陷，惟需遵守以下條件與排除項目：

保固範圍包括哪些項目？

1. 原裝置及/或 SharkNinja 全權判定為有缺陷的非耗損零件，可在原購買日期起一 (1) 年內進行維修或更換。
2. 若提供更換產品，保固期限將於收到更換產品後六 (6) 個月或原保固期剩餘時間內（取較長者）結束。SharkNinja 保留以等值或更高價值產品進行更換的權利。

保固範圍不包括哪些項目？

1. 正常耗損的零件（如泡棉濾網、HEPA 濾網、清潔墊等）。這些零件需定期維護和/或更換以確保設備正常運作，並不在保固範圍內。替換零件可於 **sharkninja.tw** 購買。
2. 任何遭到修改或用於商業用途的裝置。
3. 因誤用、濫用、疏忽操作（如吸入水或其他液體）、未按要求進行維護（如未清潔濾網或未清除滾刷上的異物），或運輸過程中不當處理所造成的損壞。
4. 衍生性和附帶性損害。
5. 非 SharkNinja 授權維修人員進行維修所導致的損壞。此類損壞包括由非 SharkNinja 授權人員在進行運送、修改或維修的過程中，所導致的 SharkNinja 產品（或其零件）損壞。

如何獲得維修服務

若您的裝置在正常家庭使用條件下於保固期內無法正常運作，請造訪 **sharkninja.tw** 查詢產品保養與維護的自助服務。您也可透過致電 **0800-000-605** 聯絡我們的客戶服務專員，他們能為您提供產品支援與保固服務選項，並有可能為特定產品類別提供 VIP 保固升級選項。我們也建議您於 **sharkninja.tw** 完成產品線上註冊，且在聯絡時將產品準備好在一旁，以便我們能更有效地協助您。

如何申請保固服務

您必須致電 **0800-000-605** 以啟動保固申請流程。為了更有效協助您，請於致電前完成產品註冊，並在致電時備妥產品。您將需要收據作為購買憑證。客戶服務專員將提供您產品送回及包裝的相關指示。我們也建議您於 **sharkninja.tw** 完成產品線上註冊，且在聯絡時將產品準備好在一旁，以便我們能更有效地協助您。

一 (1) 年有限電池保固

此一 (1) 年有限保固適用於從**新加坡商維諾瓦股份有限公司臺灣分公司授權經銷商購買的產品**。保固範圍僅適用於原購買人及原產品，且不得轉讓。

SharkNinja 保證在正常家庭使用條件下，並依照《使用者指南》中規定的要求進行保養的情況下，本電池自購買日起一 (1) 年內不會出現材料或工藝上的缺陷，惟需遵守以下條件與排除項目：

保固範圍包括哪些項目？

1. 經 SharkNinja 全權判定為有缺陷的原電池，可在原購買日期起一 (1) 年內進行更換。
2. 若提供更換電池，保固期限將於收到更換電池後六 (6) 個月或原保固期剩餘時間內（取較長者）結束。SharkNinja 保留以等值或更高價值產品進行更換的權利。

保固範圍不包括哪些項目？

1. 電池的正常耗損。如需確保電池正常運作，請在適當溫度下儲存和使用。替換電池可於 **sharkninja.tw** 購買。
2. 遭到修改或用於商業用途的電池。
3. 因誤用、濫用、疏忽操作（如將電池暴露於液體或極端高/低溫環境）、未按要求進行維護，或運輸過程中不當處理所造成的損壞。
4. 衍生性和附帶性損害。
5. 非 SharkNinja 授權維修人員進行維修所導致的損壞。此類損壞包括由非 SharkNinja 授權人員在進行運送、修改或維修的過程中，所導致的 SharkNinja 產品（或其零件）損壞。

如何獲得維修服務

若您的電池在正常家庭使用條件下於保固期內無法正常運作，請造訪 **sharkninja.tw** 查詢產品保養與維護的自助服務。您也可透過致電 **0800-000-605** 聯絡我們的客戶服務專員，他們能為您提供產品支援與保固服務選項。為了更有效協助您，請於 **sharkninja.tw** 完成產品線上註冊，並在致電時備妥產品。

如何申請保固服務

您必須致電 **0800-000-605** 以啟動保固申請流程。您將需要收據作為購買憑證。我們也建議您於 **sharkninja.tw** 完成產品線上註冊，且在聯絡時將產品準備好在一旁，以便我們能更有效地協助您。致電時，客戶服務專員將提供您產品退回及包裝的相關指示。

REGISTER YOUR PURCHASE



RECORD THIS INFORMATION

Model Number: _____

Date Code: _____

Date of Purchase: _____
(Keep receipt)

Store of Purchase: _____

TIP: You can find the model and serial numbers on the QR code label on the bottom of the back of the hand vacuum and battery.

TECHNICAL SPECIFICATIONS

Voltage: 14.8V

註冊您購買的產品



請記錄此資訊

型號: _____

日期代碼: _____

購買日期: _____
(請保留收據)

購買商店: _____

提示:您可以在手持吸塵器和電池背面底部的 QR 碼標籤上找到型號和序號。

技術規格

電壓: 14.8V

限用物質含有情況標示聲明書

Declaration of the Presence Condition of the Restricted Substances Marking

設備名稱: Shark Clean Sense IQ 無線吸塵器 Equipment name				型號(型式): IW2241TW Type designation (Type)		
單元Unit	限用物質及其化學符號 Restricted substances and its chemical symbolsv					
	鉛 Lead (Pb)	汞 Mercury (Hg)	鎘 Cadmium (Cd)	六價鉻 Hexavalent chromium (Cr ⁺⁶)	多溴聯苯 Polybrominated biphenyls (PBB)	多溴二苯醚 Polybrominated diphenyl ethers (PBDE)
PCBA	○	○	○	○	○	○
電機	○	○	○	○	○	○
充電端子支撐架	○	○	○	○	○	○
塑膠外殼	○	○	○	○	○	○
內部配線	○	○	○	○	○	○
備考1. `超出0.1 wt %` 及 `超出0.01 wt %`係指限用物質之百分比含量超出百分比含量基準值。 Note 1: “Exceeding 0.1 wt %” and “exceeding 0.01 wt %” indicate that the percentage content of the restricted substance exceeds the reference percentage value of presence condition. 備考2. `○`係指該項限用物質之百分比含量未超出百分比含量基準值。 Note 2: “O” indicates that the percentage content of the restricted substance does not exceed the percentage of reference value of presence. 備考3. `—`係指該項限用物質為排除項目。 Note 3: The “-” indicates that the restricted substance corresponds to the exemption.						

掃描以註冊:
sharkninja.tw
型號:
XXXXXXXX
製造編號:
Y20A3109Z1A7



製造編號中前四位為製造日期編號。
In Manufacture Code, the first 4 letters are Manufacture Date Code.
以上圖中“Y20A”為例,Y代表製造月份(參考表A),20代表製造日期,A代表製造年份(參考表B)。
Take “Y20A” in above picture as example, “Y” means Month (refer to Table A), “20” means Date, “A” means Year (refer to Table B).

表A Table A	
月份 Month	編號 Code
1 月 January	A
2 月 February	F
3 月 March	H
4 月 April	J
5 月 May	K
6 月 June	Q
7 月 July	R
8 月 August	S
9 月 September	U
10 月 October	Z
11 月 November	X
12 月 December	Y

表A Table A	
年份 Year	編號 Code
2016	A
2017	F
2018	H
2019	J
2020	K
2021	Q
2022	R
2023	S
2024	U
2025	Z
2026	X
2027	Y
接下來 Next	從A重新開始 Start over with “A”

Disassembly instructions:

- Batteries must be removed from the appliance before being discarded.
- The appliance must be disconnected from the mains before removing the battery.
- Batteries should be disposed of safely.
- Press the battery latch and remove the battery from the appliance.



拆卸指南

- 在報廢之前，必須將電池從電器中取出
- 取出電池前，必須中斷電器與電源的連接
- 應安全處理電池
- 壓住電池卡榫後將電池自電器中移開。

PLEASE READ CAREFULLY AND KEEP FOR FUTURE REFERENCE.

This Owner's Guide is designed to help you get a complete understanding of your new Shark™ Clean Sense IQ™ Cordless Vacuum.

104105臺北市中山區南京東路3段168號2樓之1
2F.-1, No. 168, Sec. 3, Nanjing E. Rd., Zhongshan Dist., Taipei City 104105.
Customer Support: 0800-000-605

製造商 Manufacturer: SharkNinja Operating LLC
進口商: 新加坡商維諾瓦股份有限公司台灣分公司
Importer: OSONOVA PRIVATE LIMITED TAIWAN BRANCH
地址: 104105台北市中山區南京東路3段168號2樓之1
Address: 2F.-1, No. 168, Sec. 3, Nanjing E. Rd., Zhongshan Dist., Taipei City 104105.
電話 Tel: 0800-000-605
sharkninja.tw

Illustrations may differ from actual product. We are constantly striving to improve our products; therefore the specifications contained herein are subject to change without notice.

This product may be covered by one or more U.S. patents. See sharkninja.com/patents for more information.

請仔細閱讀並保留以供日後參考。

本《使用者指南》旨在幫助您全面瞭解新的 Shark™ Clean Sense IQ™ 無線吸塵器。

104105臺北市中山區南京東路3段168號2樓之1
2F.-1, No. 168, Sec.3, Nanjing E. Rd., Zhongshan Dist., Taipei City 104105.
客戶支援部門: 0800-000-605

製造商 Manufacturer: SharkNinja Operating LLC
進口商: 新加坡商維諾瓦股份有限公司台灣分公司
進口商: OSONOVA PRIVATE LIMITED TAIWAN BRANCH
地址: 104105台北市中山區南京東路3段168號2樓之1
地址: 2F.-1, No. 168, Sec.3, Nanjing E. Rd., Zhongshan Dist., Taipei City 104105
電話 Tel: 0800-000-605
sharkninja.tw

圖例可能與實際產品有所不同。我們將持續努力改善我們的產品，因此本文中的規格可能會有所變更，恕不另行通知。

本產品可能受到一項或多項美國專利的保護。請參閱 sharkninja.com/patents 以瞭解更多資訊。

© 2025 SharkNinja Operating LLC. SHARK and CLEAN SENSE IQ are trademarks of SharkNinja Operating LLC.
RBRC is a trademark of Rechargeable Battery Recycling Corporation.

© 2025 SharkNinja Operating LLC。SHARK 和 CLEAN SENSE IQ 是 SharkNinja Operating LLC 的商標。
RBRC 是 Rechargeable Battery Recycling Corporation (充電電池回收公司) 的商標。

IW2241TW_IB_TW_REV_Mv1