



重要安全說明

使用前請閱讀所有說明 • 僅供家庭使用

	請閱讀並複習操作與使用說明。
	表示若忽略與該符號相關的警告，將存在可能導致人身傷害、死亡或重大財產損失的危險。
	僅供家庭使用。
	表示連接 USB-C 線以為裝置充電的位置。
使用電器產品時，應一律遵循基本安全注意事項，包括以下內容：	

⚠警告：為降低受傷、火災、電擊或財產損失的風險，必須一律遵循基本安全注意事項，包括以下編號警告及後續說明。請勿將本設備用於非原設計用途。

- 1 使用本設備及其配件前，請先閱讀所有說明。
- 2 僅使用與馬達底座底部標示之超低電壓相符的電源供應器。
- 3 操作 BlastBlade™ 刀片時**請務必**小心。刀片鋒利，請小心處理。**僅能**透過握持馬達底座以拿取 BlastBlade 刀片。操作 BlastBlade 刀片時若未小心使用，將有造成割傷的風險。
- 4 拆箱與設定設備時請慢慢進行並小心操作。本設備內含鬆開的鋒利刀片，若操作不當可能造成傷害。
- 5 請清點所有內容物，以確保您擁有正確、安全操作本設備所需的全部零件。
- 6 使用前，請清洗所有可能接觸食物的零件。請依本使用者指南中的清洗說明進行。
- 7 **請勿**攪拌高溫液體、起泡液體或碳酸液體，否則可能導致壓力升高，進而造成灼傷或其他使用者受傷的風險。
- 8 **請勿**將調理杯裝填超過**最高水位線**。
- 9 刀片鋒利。請小心處理。
- 10 加料與操作時請保持手部、頭髮與衣物遠離調理杯。**請勿將手伸入調理杯或靠近 BlastBlade 刀片的位置。即使飲用蓋已移除，刀片仍可能啟動。**
- 11 處理前請移除所有餐具。未移除餐具可能導致攪拌調理杯受損或破裂，進而造成人身傷害。
- 12 為避免因電池損壞而導致火災風險，**請勿**將馬達底座浸入任何形式的液體中。
- 13 **請勿**將產品存放於戶外或浸入液體中。
- 14 **請勿**讓兒童操作本設備或當作玩具使用。在兒童附近使用任何設備時需密切監督。
- 15 本設備**不適合**身體、感官或心智能力受限者，或缺乏經驗與知識者單獨使用，除非負責其安全的人員在旁監督或指導設備的使用方式。
- 16 每次使用前，請檢查 BlastBlade 刀片是否損壞。
- 17 **請勿**嘗試自行磨利刀片。
- 18 **請勿**讓裝置的任何部位接觸高溫表面，包括爐具或其他加熱設備。
- 19 **請務必**在乾燥且平坦的表面上使用本設備。
- 20 加料與操作時請保持手部、頭髮與衣物遠離調理杯。

重要安全說明

使用前請閱讀所有說明・僅供家庭使用

- 21 僅使用產品隨附或 SharkNinja 建議的附件與配件。使用非 SharkNinja 建議或販售的配件可能導致火災、電擊或受傷。
- 22 操作與處理設備時，請避免接觸運轉中的零件。
- 23 請勿在調理杯空無一物時操作設備。
- 24 請勿將任何設備所提供的調理杯或配件放入微波爐中加熱。
- 25 請勿執行研磨操作。
- 26 操作前請確認已移除調理杯中的所有用具。未移除用具可能會導致調理杯破裂，造成人身傷害與財產損失。
- 27 請勿嘗試破壞安全鎖機制。操作前請確認調理杯與飲用蓋已正確安裝。
- 28 請勿讓調理杯與配件暴露於極端溫度變化中，否則可能導致損壞。
- 29 使用時切勿讓設備處於無人看管的狀態。
- 30 若發現杯壁有未混合的食材，請使用電源按鈕關閉設備，並用刮刀將食材刮下。
- 31 BlastBlade 刀片仍在旋轉時，請勿嘗試從馬達底座移除調理杯和/或飲用蓋。待設備完全停止後再取下蓋子和/或調理杯。
- 32 請勿在攪拌前後長時間存放食材。某些食物可能含有活性成分或釋放會膨脹的氣體，若留存於密封調理杯中，將造成壓力升高，進而可能導致受傷風險。
- 33 若設備過熱，將啟動熱保護裝置並暫時停用馬達。若要重設，請使用電源按鈕關閉 Ninja Blast™ 無線調理機，並等待約 15 分鐘冷卻後再重新使用。
- 34 未加入液體至調理杯時，請勿處理乾燥食材。本裝置不適用於乾攪作業。
- 35 請僅在蓋上飲用蓋時操作。
- 36 請勿將調理杯放入冰箱或冷凍庫。
- 37 更換配件或接近使用中的移動零件前，請關閉設備並中斷電源連接。
- 38 請勿誤用本設備，以避免潛在的傷害。
- 39 請使用原廠的 5V type-C 充電線充電。請勿將高溫液體倒入調理機，因蒸氣可能會突然噴發導致高溫液體外溢，造成危險。僅能搭配原廠馬達基座使用。

▲警告：調理機自馬達基座移開前，應確保已關閉電源。使用前，請務必清潔與食物接觸的各部件。電器內含鋰電池，報廢時請依當地回收規定處理。電器報廢前應取出電池。取出電池前電器應切斷電源。應安全的丟棄電池。

電池使用

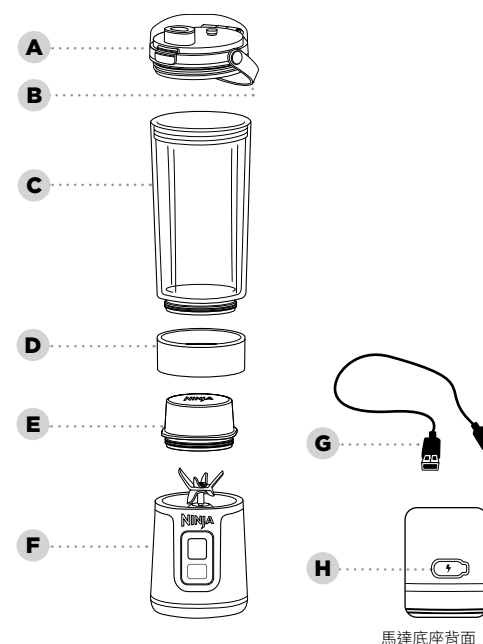
- 1 電池是 Ninja Blast™ 無線調理機的電力來源。請仔細閱讀並遵循所有充電說明。
- 2 即使本設備已嚴重損壞，也請勿將其焚燒。鋰電池可能會在火中爆炸。請務必妥善回收由鋰電池供電的產品。
- 3 由於本產品無電源線，請在未使用、清潔或從飲用蓋飲用時，確保已關閉，以防止刀片意外啟動。
- 4 請將電池遠離所有金屬物件，如迴紋針、硬幣、鑰匙、釘子或螺絲。電池端子短路會增加火災或燒傷風險。
- 5 在不當使用的狀況下，電池可能會釋出液體。請避免接觸此液體，因其可能引起皮膚刺激或灼傷。若不慎接觸，請立即以清水沖洗。若液體接觸到眼睛，請立即尋求醫療協助。
- 6 本裝置內含無法更換的電池，以及可能對使用者造成風險的活動零件。

請妥善保存此說明

零件

- A 飲用蓋
- B 提把
- C 調理杯
- D 調理杯蓋*
- E 刀片蓋*
- F 含 BlastBlade 刀片的馬達底座
- G USB-C 充電線
- H 充電連接埠

*配件與裝置顏色依型號而異。



充電

使用隨附的充電線和 5V 3A 電源供應器為裝置充電，直到 LED 指示燈恆亮綠燈。充電連接埠位於馬達底座背面。

第一次使用前

重要事項：請在繼續操作前閱讀本使用者指南開頭的所有警告。

備註：

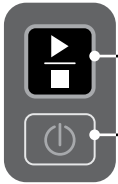
- 請以握住馬達底座的方式拿取 BlastBlade 刀片。
- 所有配件皆不含 BPA。所有配件（馬達底座除外）皆可放置於洗碗機上層清洗。請勿使用加熱烘乾循環。放入洗碗機前，請確認蓋子與調理杯已從馬達底座移除。操作 BlastBlade 刀片時請小心。

請移除裝置上的所有包裝材料。拆封 BlastBlade 刀片時請小心，因為刀片鋒利。

使用帶手柄的洗碗用具，在溫熱的肥皂水中清洗調理杯、蓋子與 BlastBlade 刀片，以避免直接接觸刀片。清潔時請勿將馬達底座浸入水中。處理 BlastBlade 刀片時請小心，因為刀片鋒利。

請徹底沖洗並風乾所有適用的零件。

使用控制面板



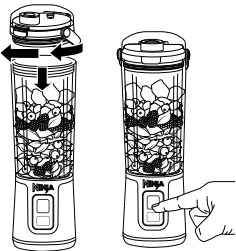
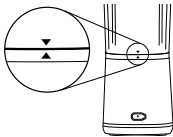
- 程序：**
- 開始/停止按鈕**
按一次開始/停止按鈕以啟動 30 秒的攪拌循環。
- 電源按鈕**
按下電源按鈕可 **開啟**或 **關閉**裝置。

故障排除	LED 指示燈顯示	解決方法
調理杯與底座未對齊	白燈閃爍	請使用馬達底座與調理杯背後的箭頭，確保調理杯與馬達底座對齊。
刀片卡住	橘燈閃爍	移除卡在刀片上的食材，然後重新啟動攪拌程序。
需要充電	紅燈恆亮	請為裝置充電。
充電線異常	紅燈和藍燈閃爍	充電線故障，請拔除並使用正確的 5V 3A 充電線。
等待裝置冷卻時間	橘燈順時針轉動	請將裝置靜置於室溫下15 分鐘後再使用。
充電中	白燈和紅燈閃爍	請致電客服專線 0800-000-605。
攪拌中	左下角與右上角紅燈閃爍	請致電客服專線 0800-000-605。

使用調理杯

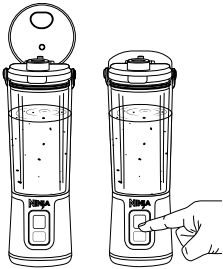
重要事項：請在繼續操作前閱讀本使用者指南開頭的所有警告。

- 1** 確保馬達底座已完全充電，並將調理杯上的箭頭與馬達底座背後的箭頭對齊，以正確安裝調理杯。



- 2** 按下 **開始/停止** 按鈕以**開啟**裝置，直到開始/停止按鈕的燈亮起。
- 3** 加入食材前，先倒入液體至**最低水位線**，再加入固體食材。若使用冰塊，請務必最後加入。**請勿**將食材裝填超過**最高水位線**。將蓋子順時針旋緊以固定在調理杯上。
- 4** 按下開始/停止按鈕，進行 30 秒的攪拌循環。

- 5** 開啟飲用蓋直接飲用，或移除蓋子將攪拌內容物倒入其他容器中。調理杯裝滿時**請勿**從馬達底座上取下。從馬達底座上取下前，請先清空調理杯。
- 6** 攪拌完成後，按下 **開始/停止** 按鈕**關閉**裝置。從飲用蓋飲用及攪拌機不再使用時，請**關閉**馬達底座。
- 7** 請參閱「保養與維護」一節，瞭解清潔與收納說明。



保養與維護

清潔

移除蓋子後刀片可能仍在運轉。清潔時若未蓋上蓋子，或 BlastBlade 刀片外露時，請務必將裝置關閉。

手洗

使用溫熱的肥皂水清洗調理杯、蓋子與 BlastBlade 刀片。使用洗碗用具或布料清潔馬達底座上的 BlastBlade 刀片。處理馬達底座上的 BlastBlade 刀片時請小心，因為刀片鋒利。請用乾淨的濕布擦拭馬達底座。**請勿**將馬達底座浸入水中。請徹底沖洗並風乾所有適用的零件。

馬達底座

USB-C 連接埠具備防水功能，因此馬達底座可於水槽中沖洗；**但請勿**將馬達底座放入洗碗機或浸入水中。清潔前請確認沒有插入 USB-C 充電器。清潔後，請讓 USB-C 充電連接埠風乾 30 分鐘再進行充電。

深度清潔

洗碗機

調理杯與飲用蓋可放置於洗碗機上層清洗。**請勿**使用加熱烘乾循環。放入洗碗機前，請先將調理杯與飲用蓋從馬達底座上移除。

收納

- 請直立收納裝置，並將蓋子、調理杯與馬達底座完整組裝後一起存放。
- 請勿**將已攪拌或未攪拌的食材長時間存放於含 BlastBlade 刀片的調理杯中。
- 請勿**將物品堆放在調理杯上。將其餘附件與裝置一同存放，或放置於不會造成損壞或引發危險的櫃子中。

訂購替換零件


欲訂購額外零件與附件，請造訪 sharkninja.tw。

故障排除指南

⚠警告：為降低觸電與設備意外運作的風險，請在進行故障排除前將裝置關閉。

進行故障排除時，請確認裝置未在充電中。請確認裝置已完全充電，且調理杯已正確對齊。

控制面板無法關閉。

- 請按下  按鈕以**開啟**或**關閉**裝置。

無法均勻攪拌；食材卡住。

- 裝填調理杯時，請先加入液體至**最低水位線**，再加入新鮮水果或蔬菜，接著加入葉菜類蔬菜或香草。再來加入種子、粉末或堅果醬。最後加入冰塊或冷凍食材。
- 若食材經常卡住，加入一些液體通常會有所幫助。請確認您已裝填調理杯至**最低水位線**或以上。您也可以**在攪拌時搖晃調理機**，或將攪拌機倒置後啟動攪拌循環，再正放，以便攪動食材。

飲用蓋難以安裝至調理杯。

- 將已組裝的馬達底座與調理杯放置於水平表面。將飲用蓋放在調理杯頂部並對齊螺紋，使飲用蓋平放。順時針旋轉至密合為止。

調理杯難以安裝至馬達底座。

- 將馬達底座放置於水平表面。將調理杯放在馬達底座頂部並對齊螺紋，使調理杯平放。順時針旋轉至密合為止。當調理杯正確安裝時，顯示器上的 LED 指示燈會恆亮紫燈。

此一 (1) 年有限保固適用於從**新加坡商維諾瓦股份有限公司臺灣分公司**授權零售商購買的產品。保固範圍僅適用於原購買人及原產品，且不得轉讓。

SharkNinja 保證在正常家庭使用條件下，並依照《使用者指南》中所示的要求進行維護的情況下，本產品自購買日起一 (1) 年內不會出現材料或做工上的瑕疵，惟需遵守以下條件與排除項目：

保固涵蓋哪些項目？

- 原裝置及/或 SharkNinja 自行判定為有瑕疵的非耗損零件，可在原購買日期起一 (1) 年內進行維修或更換。
- 若為提供更換產品的情況，保固期限將於收到更換產品後六 (6) 個月或原保固期剩餘時間內（取較長者）結束。SharkNinja 保留以等值或更高價值產品進行更換的權利。

保固不涵蓋哪些項目？

- 正常磨損的零件（如攪拌容器、蓋子、杯子、刀片、攪拌機底座、可拆式內鍋、料理架、烤盤等），這些零件需定期維護及/或更換以確保裝置正常運作，並不在保固涵蓋範圍內。替換零件可於 sharkninja.tw 購買。
- 任何遭到竄改或用於商業用途的裝置。
- 因誤用、濫用、疏忽操作、未執行必要保養（如未保持馬達座凹槽清潔，避免食物殘渣或其他異物堆積），或因運送過程中搬運不當所造成的損壞。
- 衍生性和附帶性損害。
- 由非 SharkNinja 授權維修人員所造成的瑕疵。此類瑕疵包括由非 SharkNinja 授權人員在進行運送、修改或修理的過程中，所導致的 SharkNinja 產品（或其零件）損壞。

如何獲得維修服務

若您的設備在正常家庭使用條件下於保固期內無法正常運作，請造訪 sharkninja.tw 查詢產品保養與維護的自助服務。

產品保固註冊

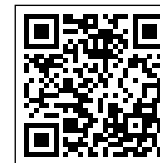
請至 sharkninja.tw 上傳有效購買憑證（須包含購買日期與商品明細，如發票、出貨單或其他相關證明），並登錄產品序號，即可完成線上保固註冊。

限用物質含有情況標示聲明書

Declaration of the Presence Condition of the Restricted Substances Marking

設備名稱: Ninja Blast 無線調理機 Equipment name		型號(型式): BC100TWBK/BC100TWWH Type designation (Type)				
單元Unit	限用物質及其化學符號 Restricted substances and its chemical symbolsv					
	鉛 Lead (Pb)	汞 Mercury (Hg)	鎘 Cadmium (Cd)	六價鉻 Hexavalent chromium (Cr ⁺⁶)	多溴聯苯 Polybrominated biphenyls (PBB)	多溴二苯醚 Polybrominated diphenyl ethers (PBDE)
PCB	○	○	○	○	○	○
轉動馬達	○	○	○	○	○	○
塑膠外殼	○	○	○	○	○	○
內部配線	○	○	○	○	○	○
金屬刀頭	○	○	○	○	○	○
備考1. `超出0.1 wt %`及`超出0.01 wt %`係指限用物質之百分比含量超出百分比含量基準值。 Note 1: “Exceeding 0.1 wt %” and “exceeding 0.01 wt %” indicate that the percentage content of the restricted substance exceeds the reference percentage value of presence condition. 備考2. `○`係指該項限用物質之百分比含量未超出百分比含量基準值。 Note 2: “○” indicates that the percentage content of the restricted substance does not exceed the percentage of reference value of presence. 備考3. `—`係指該項限用物質為排除項目。 Note 3: The “—” indicates that the restricted substance corresponds to the exemption.						

掃描以註冊：
sharkninja.tw
 型號：
BC105COTW
 製造編號：
Y20A3109Z1A7



製造編號中前四位為製造日期編號。

In Manufacture Code, the first 4 letters are Manufacture Date Code.

以左圖中“Y20A”為例，Y代表製造月份(參考表A)，20代表製造日期，A代表製造年份(參考表B)。

Take “Y20A” on the left picture as example, “Y” means Month (refer to Table A), “20” means Date, “A” means Year (refer to Table B).

參考表A / Table A	
月份 Month	編號 Code
1月 January	A
2月 February	F
3月 March	H
4月 April	J
5月 May	K
6月 June	Q
7月 July	R
8月 August	S
9月 September	U
10月 October	Z
11月 November	X
12月 December	Y

參考表B / Table B	
年份 Year	編號 Code
2016	A
2017	F
2018	H
2019	J
2020	K
2021	Q
2022	R
2023	S
2024	U
2025	Z
2026	X
2027	Y
接下來 Next	從A座新開始 Start over with “A”



BLAST™ PORTABLE BLENDER
BC105COTW | Owner's Guide



IMPORTANT SAFETY INSTRUCTIONS

PLEASE READ ALL INSTRUCTIONS BEFORE USE • FOR HOUSEHOLD USE ONLY

	Read and review instructions for operation and use.
	Indicates the presence of a hazard that can cause personal injury, death or substantial property damage if the warning included with this symbol is ignored.
	For household use only.
	Indicates location to attach USB-C cord for charging unit.
When using electrical appliances, basic safety precautions should always be followed, including the following:	

- ⚠WARNING:** To reduce the risk of injury, fire, electrical shock or property damage, basic safety precautions must always be followed, including the following numbered warnings and subsequent instructions. Do not use appliance for other than intended use.
- 1 Read all instructions prior to using the appliance and its accessories.
 - 2 Use only a power supply with an extra low voltage corresponding to the marking on the bottom of the motor base.
 - 3 **ALWAYS** exercise care when handling the BlastBlade™ Assembly. The blades are sharp, handle carefully. **ONLY** grasp the BlastBlade Assembly by the motor base. Failure to use care when handling the BlastBlade Assembly will result in a risk of laceration.
 - 4 Take your time and exercise care during unpacking and appliance setup. This appliance contains sharp, loose blades that can cause injury if mishandled.
 - 5 Take inventory of all contents to ensure you have all parts needed to properly and safely operate your appliance.
 - 6 Before use, wash all parts that may contact food. Follow washing instructions covered in this Owner's Guide.
 - 7 **DO NOT** blend hot liquids, effervescent, or carbonated liquids, as doing so may cause pressure buildup, resulting in risk of burns or other injuries to the user.
 - 8 **DO NOT** fill the blending vessel past the **MAX FILL** line.
 - 9 Blades are sharp. Handle carefully.
 - 10 Keep hands, hair, and clothing out of the vessel when loading and operating. **DO NOT put your hands inside the vessel or anywhere near the BlastBlade Assembly. Blades can still activate when the sip lid is removed.**
 - 11 Remove utensils prior to processing. Failure to remove may cause the blending vessel to be damaged or to shatter, which may cause personal injury.
 - 12 To protect against the risk of fire from battery damage, **DO NOT** submerge the motor base in any form of liquid.
 - 13 **DO NOT** store outdoors or allow the product to be submerged in liquid.
 - 14 **DO NOT** allow children to operate this appliance or use as a toy. Close supervision is necessary when any appliance is used near children.
 - 15 This appliance is **NOT** intended to be used by people with reduced physical, sensory, or mental capabilities, or lack of experience and knowledge, unless they have been given supervision or instruction concerning use of the appliance by a person responsible for their safety.
 - 16 Before each use, inspect BlastBlade Assembly for damage. If a blade is bent or damage is suspected, contact SharkNinja to arrange for replacement.
 - 17 **DO NOT** attempt to sharpen blades.
 - 18 **DO NOT** allow any part of the unit to contact hot surfaces, including stoves and other heating appliances.
 - 19 **ALWAYS** use the appliance on a dry and level surface.

IMPORTANT SAFETY INSTRUCTIONS

PLEASE READ ALL INSTRUCTIONS BEFORE USE • FOR HOUSEHOLD USE ONLY

- 20 Keep hands, hair, and clothing out of the vessel when loading and operating.
- 21 **ONLY** use attachments and accessories that are provided with the product or are recommended by SharkNinja. The use of attachments not recommended or sold by SharkNinja may cause fire, electric shock, or injury.
- 22 During operation and handling of the appliance, avoid contact with moving parts.
- 23 **DO NOT** operate the appliance with an empty container.
- 24 **DO NOT** microwave any containers or accessories provided with the appliance.
- 25 **DO NOT** perform grinding operations.
- 26 Before operation, ensure all utensils are removed from containers. Failure to remove utensils can cause the vessel to shatter and potentially result in personal injury and property damage.
- 27 **DO NOT** attempt to defeat the interlock mechanism. Ensure the vessel and sip lid are properly installed before operation.
- 28 **DO NOT** expose the containers and accessories to extreme temperature changes. They may experience damage.
- 29 **NEVER** leave the appliance unattended while in use.
- 30 If you find unmixed ingredients sticking to the sides of the cup, turn off the appliance using the Power Button, and use a scraper to dislodge ingredients.
- 31 **DO NOT** attempt to remove the vessel and/or sip lid from the motor base while the BlastBlade Assembly is still spinning. Allow the appliance to come to a complete stop before removing lid and/or vessel.
- 32 **DO NOT** store ingredients for extended amounts of time before or after blending them. Some foods may contain active ingredients or release gases that will expand if left in a sealed container, resulting in excessive pressure buildup that can pose a risk of injury.
- 33 If the appliance overheats, a thermal switch will activate and temporarily disable the motor. To reset, turn **OFF** the Ninja Blast™ Portable Blender using the Power Button and allow it to cool for approximately 15 minutes before using again.
- 34 **DO NOT** process dry ingredients without adding liquid to the blending vessel. Unit is not intended for dry blending.
- 35 Operate **ONLY** with the sip lid on.
- 36 **DO NOT** refrigerate or freeze blender.
- 37 Switch off the appliance and disconnect from supply before changing accessories or approaching parts that move in use.
- 38 **DO NOT** misuse the appliance to avoid potential injury.
- 39 Only use 5V type-C cord for charging. Do not pour high heat liquid into the blender, the steam may cause hot liquid to overflow the container. Use only with its original motor base.

⚠WARNING: Before removing the blender from its base, ensure that the power is turned off and clean surfaces that come into contact with food. Before disposing of the appliance, the battery should be removed. The appliance must be powered off before removing the battery, and the battery should be disposed of safely.

BATTERY USE

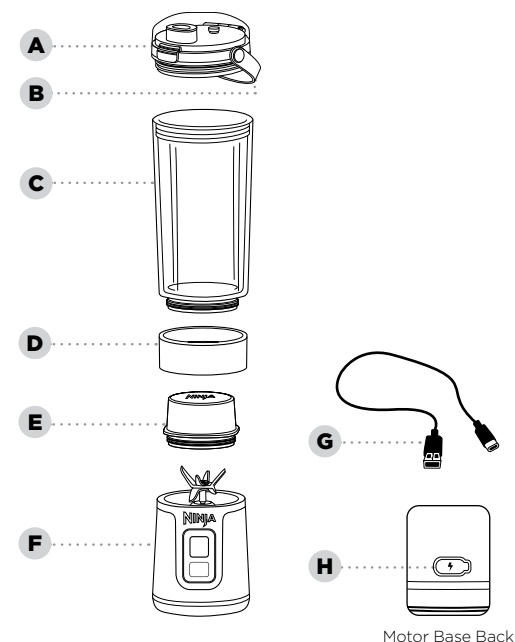
- 1 The battery is the power source for the Ninja Blast™ Portable Blender. Carefully read and follow all charging instructions.
- 2 **DO NOT** incinerate this appliance even if it is severely damaged. The lithium-ion batteries can explode in a fire. Always properly recycle products powered by lithium-ion batteries.
- 3 Since there is no power cord, prevent accidental blade activation by ensuring the blender is turned **OFF** when not in use, while cleaning, or when drinking from the sip lid.
- 4 Keep the battery away from all metal objects such as paper clips, coins, keys, nails, or screws. Shorting the battery terminals together increases the risk of fire or burns.
- 5 Under abusive conditions, liquid may be ejected from the battery. Avoid contact with this liquid, as it may cause irritation or burns. If contact occurs, flush with water. If liquid contacts eyes, seek medical help.
- 6 This unit contains batteries that are only replaceable by skilled persons.
- 7 This unit contains batteries that are non-replaceable and moving parts that potentially present risk to the user.

SAVE THESE INSTRUCTIONS

PARTS

- A Sip Lid
- B Carry Handle
- C Blending Vessel
- D Vessel Cap*
- E Blade Cover*
- F Motor Base with BlastBlade Assembly
- G USB-C Charging Cord
- H Charging Port

*Accessories and unit color may vary by model.



CHARGING ⚡

Charge the unit using the provided charging cord and a 5V 3A power supply until the LEDs illuminate solid green. Charging port is located at the back of the motor base.

BEFORE FIRST USE

IMPORTANT: Review all warnings at the beginning of this Owner's Guide before proceeding.

NOTES:

- Handle the BlastBlade Assembly by grasping around the motor base.
- All attachments are BPA free. All attachments **EXCEPT** the motor base are top-rack dishwasher safe. **DO NOT** use a heated dry cycle. Ensure lid and vessel are removed from motor base before placing in the dishwasher. Exercise care when handling BlastBlade Assembly.

Remove all packaging materials from the unit. Exercise care when unpacking BlastBlade Assembly, as the blade are sharp.

Wash vessel, lid, and BlastBlade Assembly in warm, soapy water using a dishwashing utensil with a handle to avoid direct contact with the blades. **DO NOT** submerge the motor base in water when cleaning. Exercise care when handling BlastBlade Assembly, as the blades are sharp.

Thoroughly rinse and air-dry all appropriate parts.

USING THE CONTROL PANEL

PROGRAMS:

START/STOP BUTTON
Press Start/Stop button once to activate the 30-second blend cycle.

POWER BUTTON
Press Power button to turn unit **ON** and **OFF**.

TROUBLESHOOTING	LED Shows	Solutions
Vessel and Base are Not Aligned	Flashing WHITE	Ensure vessel and motor base are aligned using the arrows on the back of motor base and vessel.
Blades are Blocked	Flashing ORANGE	Move lodged ingredients from blade and restart blend program.
Needs Charge	Solid RED	Charge unit.
Abnormal charger	Flashing RED and BLUE	Defective charger, unplug and find correct 5V 3A charger.
Unit Cool Down Time Out	Clockwise-moving ORANGE LEDs	Let unit sit at room temp for 15 minutes before using again.
While Charging	Flashing WHITE and RED	Call Customer Service at 0800-000-605.
While Blending	Flashing RED in the bottom left and top right	Call Customer Service at 0800-000-605.

USING THE BLENDING VESSEL

IMPORTANT: Review all warnings at the beginning of this Owner’s Guide before proceeding.

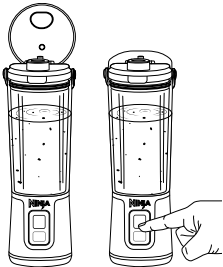
1 Ensure the motor base is fully charged and the vessel is properly installed by aligning vessel arrow with motor base arrow located on the back of the motor base.

2 Turn unit **ON** by pressing the button until Start/Stop button lights illuminate.

3 Add ingredients, starting with liquids to the **MIN LIQUID** line then solid ingredients. If using ice, always add last. **DO NOT** fill ingredients past the **MAX FILL** line. Secure lid onto the vessel, twisting clockwise to tighten.

4 Blend for a 30-second blend cycle by pressing the Start/Stop button.

- Open the sip lid to sip, or remove the lid to pour out blender outputs into another container. **DO NOT** remove vessel from motor base when filled. Empty vessel prior to removing from motor base.
- After blending, power **OFF** the unit by pressing the button. Motor base should be turned **OFF** when drinking from the sip lid and when blender is no longer in use.
- Refer to the Care & Maintenance section for cleaning and storage instructions.



CARE & MAINTENANCE

CLEANING

Blades can still operate when the lid is removed. Always turn the unit OFF when cleaning without the lid on or when the BlastBlade Assembly is exposed.

Hand-Washing

Wash vessel, lid, and BlastBlade Assembly with warm, soapy water. Use a dishwashing utensil or cloth to clean the BlastBlade Assembly on the motor base. Exercise care when handling the BlastBlade Assembly on the motor base as the blades are sharp. Wipe the motor base with a clean, damp cloth. **DO NOT** submerge the motor base in water. Thoroughly rinse and air-dry all appropriate parts.

Motor Base

The USB-C port is water resistant, which means the motor base can get rinsed in the sink; **HOWEVER** **DO NOT** put the motor base in the dishwasher or submerge it in water. Ensure the USB-C charger is not inserted before cleaning. After cleaning, let the USB-C charging port air-dry for 30 minutes before charging the unit.

DEEPER CLEAN

Dishwasher

Vessel and sip lid are top-rack dishwasher safe. **DO NOT** use a heated dry cycle. Ensure the vessel and sip lid are removed from the motor base before being placed in the dishwasher.

STORING

Store the unit upright and with the lid, vessel, and motor base fully assembled.

DO NOT store blended or unblended ingredients in the vessel with the BlastBlade Assembly for prolonged periods of time.

DO NOT stack items on top of the vessel. Store any remaining attachments alongside the unit or in a cabinet where they will not be damaged or create a hazard.

ORDERING REPLACEMENT PARTS

To order additional parts and attachments, visit sharkninja.tw.

TROUBLESHOOTING GUIDE

⚠WARNING: To reduce the risk of shock and unintended operation, turn **OFF** unit before troubleshooting.

Ensure the unit is not charging when troubleshooting. Ensure the unit is fully charged and vessel is properly aligned.

Control panel doesn't turn off.

- Press the  button to turn the unit **ON** and **OFF**.

Doesn't mix well; ingredients get stuck.

- When filling the vessel, start with liquid to the **MIN LIQUID** line, then fresh fruit or veggies, followed by leafy greens or herbs. Add your seeds, powders, or nut butters. Finish with ice or frozen ingredients.
- If ingredients are routinely getting stuck, adding some liquid will usually help. Ensure you have filled the vessel to or above the **MIN LIQUID** line. You can also shake the blender while blending or turn the blender upside down, start a blend cycle, and turn it right side up to move ingredients while blending.

Sip lid is hard to assemble on the vessel.

- Set the assembled motor base and vessel on a level surface. Place the sip lid on the top of the vessel and align the threads so the sip lid sits flat. Turn clockwise until you have a tight seal.

Vessel is hard to assemble on the motor base.

- Set the motor base on a level surface. Place the vessel on the top of the motor base and align the threads so the vessel sits flat. Turn clockwise until you have a tight seal. The LEDs on the display will be solid purple when the vessel is properly installed.

Shark | NINJA

ONE (1) YEAR LIMITED WARRANTY

NJA_1_YR_IB_LMTD_WRTY_TW_EN

The One (1) Year Limited Warranty applies to purchases made from authorized retailers of **OSONOVA PRIVATE LIMITED TAIWAN BRANCH**. Warranty coverage applies to the original owner and to the original product only and is not transferable.

SharkNinja warrants that the unit shall be free from defects in material and workmanship for a period of one (1) year from the date of purchase when it is used under normal household conditions and maintained according to the requirements outlined in the Owner's Guide, subject to the following conditions and exclusions:

What is covered by this warranty?

1. The original unit and/or non-wearable parts deemed defective, in SharkNinja's sole discretion, will be repaired or replaced up to one (1) year from the original purchase date.
2. In the event a replacement unit is issued, the warranty coverage ends six (6) months following the receipt date of the replacement unit or the remainder of the existing warranty, whichever is later. SharkNinja reserves the right to replace the unit with one of equal or greater value.

What is not covered by this warranty?

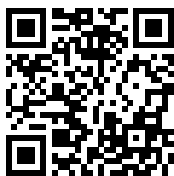
1. Normal wear and tear of wearable parts (such as blending vessels, lids, cups, blades, blender bases, removable pots, racks, pans, etc.), which require regular maintenance and/or replacement to ensure the proper functioning of your unit, are not covered by this warranty. Replacement parts are available for purchase at **sharkninja.tw**.
2. Any unit that has been tampered with or used for commercial purposes.
3. Damage caused by misuse, abuse, negligent handling, failure to perform required maintenance (e.g., failure to keep the well of the motor base clear of food spills and other debris), or damage due to mishandling in transit.
4. Consequential and incidental damages.
5. Defects caused by repair persons not authorized by SharkNinja. These defects include damages caused in the process of shipping, altering, or repairing the SharkNinja product (or any of its parts) when the repair is performed by a repair person not authorized by SharkNinja.

How to get service

If your appliance fails to operate properly while in use under normal household conditions within the warranty period, visit **sharkninja.tw** for product care and maintenance self-help. Our Customer Service Specialists are also available at **0800-000-605** to assist with product support and warranty service options. So we may better assist you, please register your product online at **sharkninja.tw** and have the product on hand when you call.

How to initiate a warranty claim

You must call **0800-000-605** to initiate a warranty claim. You will need the receipt as proof of purchase. We also ask that you register your product online at **sharkninja.tw** and have the product on hand when you call, so we may better assist you. A Customer Service Specialist will provide you with return and packing instruction information.



註冊您購買的產品



sharkninja.tw



使用行動裝置掃描 QR 碼

REGISTER YOUR PURCHASE



sharkninja.tw



Scan QR code using mobile device

請記錄此資訊

型號: _____

序號: _____

購買日期: _____
(請保留收據)

購買商店: _____

RECORD THIS INFORMATION

Model Number: _____

Serial Number: _____

Date of Purchase: _____
(Keep receipt)

Store of Purchase: _____

技術規格

電壓: 5V \pm 0.5A-3A

TECHNICAL SPECIFICATIONS

Voltage: 5V \pm 0.5A-3A

經銷商:

新加坡商維諾瓦股份有限公司臺灣分公司
104105臺北市中山區南京東路3段168號2樓之1
2F.-1, No. 168, Sec. 3, Nanjing E. Rd., Zhongshan Dist.,
Taipei City 104105, Taiwan (R.O.C.)

Distributed by:

OSONOVA PRIVATE LIMITED TAIWAN BRANCH
2F.-1, No. 168, Sec. 3, Nanjing E. Rd., Zhongshan Dist.,
Taipei City 104105, Taiwan (R.O.C.)
sharkninja.tw

圖例可能與實際產品有所不同。我們將持續努力改善我們的產品，因此本文中的規格可能會有所變更，恕不另行通知。

NINJA 和 NINJA BLAST 是 SharkNinja Operating LLC 的商標。

Illustrations may differ from actual product. We are constantly striving to improve our products, therefore the specifications contained herein are subject to change without notice.

NINJA and NINJA BLAST are trademarks of SharkNinja Operating LLC.

© 2025 SharkNinja Operating LLC

BC105COTW_IB_TC_E_MP_Mv16

