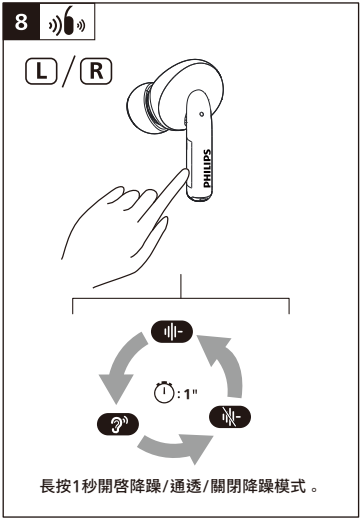
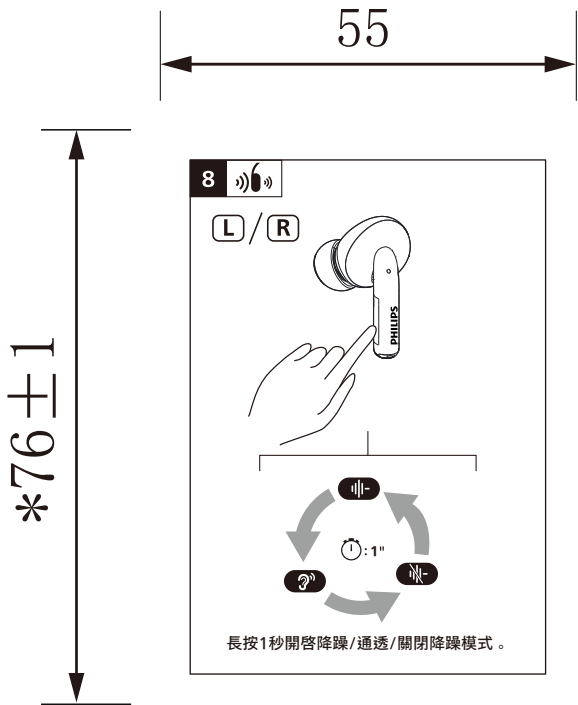
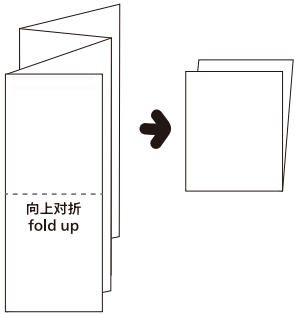
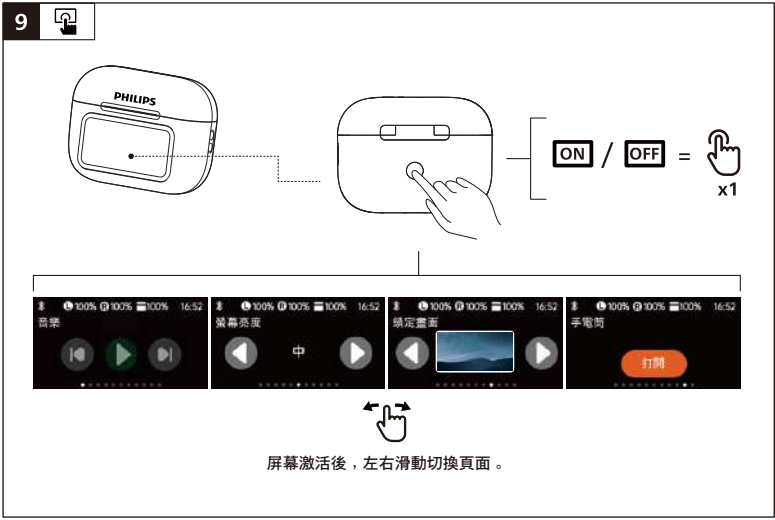


展开尺寸220*152mm
成型尺寸55*76mm

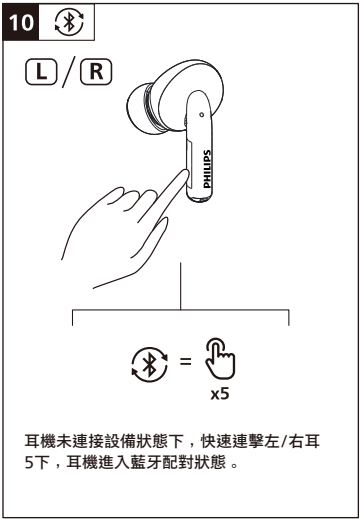
风琴折



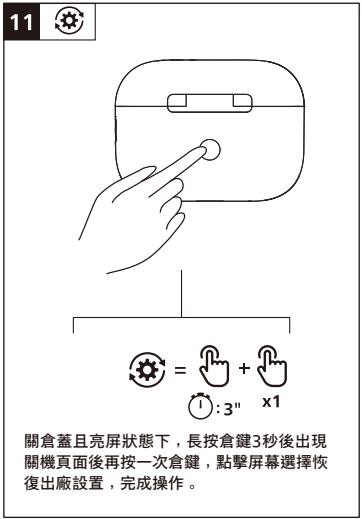
長按1秒開啓降躁/通透/關閉降躁模式。



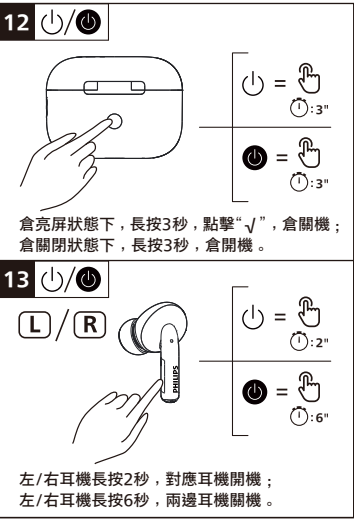
屏幕激活後，左右滑動切換頁面。



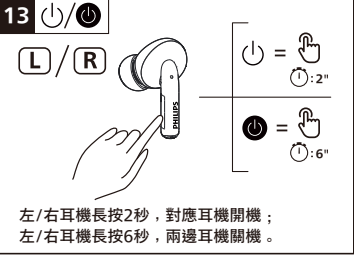
耳機未連接設備狀態下，快速連擊左/右耳5下，耳機進入藍牙配對狀態。



開盒蓋且亮屏狀態下，長按倉鍵3秒後出現關機頁面後再按一次倉鍵，點擊屏幕選擇恢復出廠設置，完成操作。



倉亮屏狀態下，長按3秒，點擊“√”，倉開機；倉關閉狀態下，長按3秒，倉開機。



左/右耳機長按2秒，對應耳機開機；左/右耳機長按6秒，兩邊耳機開機。

PHILIPS

Headphones
TAT2630



www.philips.com/welcome



Welcome to Philips!

For an optimal experience register your product at:
Para especificações e dados de garantia do produto no Brasil, acesse o website abaixo:
Pour une expérience optimale, enregistrez votre produit à l'adresse suivante:
Per un'esperienza ottimale registra il tuo prodotto su:
www.philips.com/welcome

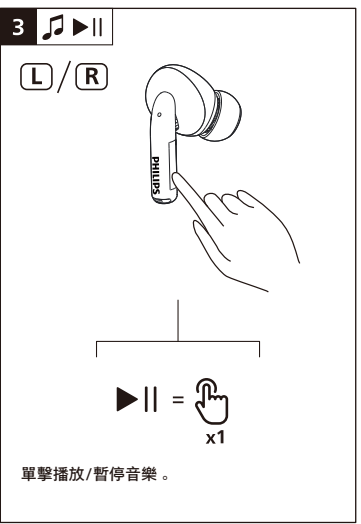
Philips and the Philips Shield Emblem are registered trademarks of Koninklijke Philips NV, and are used under license. This product has been manufactured by and is sold under the responsibility of MMD Hong Kong Holding Limited or one of its affiliates, and MMD Hong Kong Holding Limited is the warrantor in relation to this product.
Authorised Representative: UKCA Experts Ltd, Dept 302, 43 Owston Road, Carcroft, Doncaster, DN9 8DA United Kingdom
Este equipamento opera em caráter secundário, isto é, não tem direito à proteção contra interferência prejudicial, mesmo de estações do mesmo tipo, e não pode causar interferência a sistemas operando em caráter primário.
Lea cuidadosamente este instructivo antes de usar su aparato.



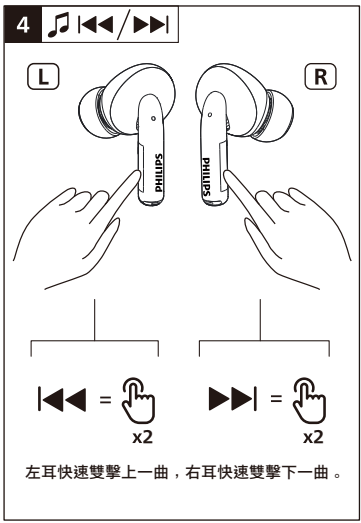
*取下耳機的絕緣膜，將耳機放入充電倉內關上倉蓋，長按倉鍵2秒激活設備，充電倉即可開始充電。



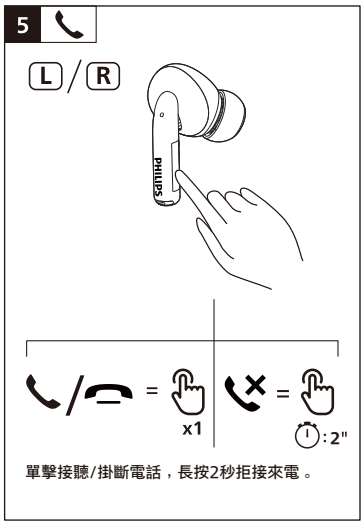
請選擇“Philips TAT2630”進行連接。



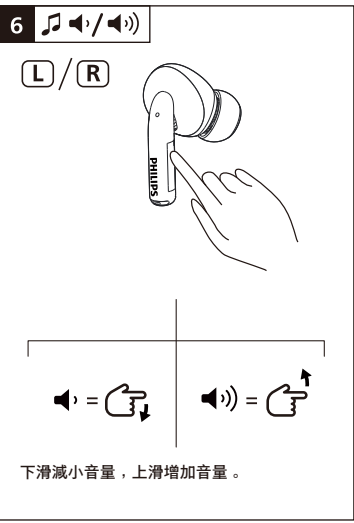
單擊播放/暫停音樂。



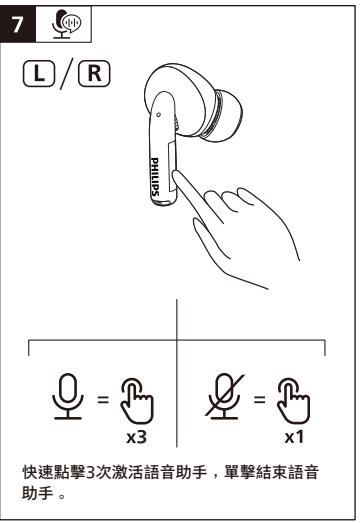
左耳快速雙擊上一曲，右耳快速雙擊下一曲。



單擊接聽/掛斷電話，長按2秒拒接來電。



下滑減小音量，上滑增加音量。



快速點擊3次激活語音助手，單擊結束語音助手。