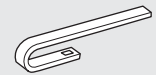


ATTENTION

Remove the yellow squeeze protectant prior to use



A

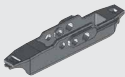


HOOK ARM

Required:

H-Base*

H-Adapter*

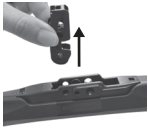


*Preinstalled

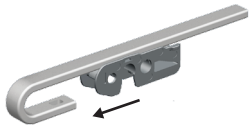
A1 Apply force to extract



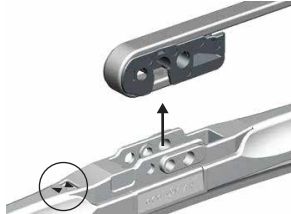
A2



A3



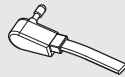
A4



A5



B



1/4" SIDE PIN

Required:

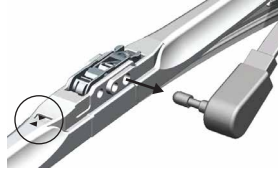
H-Base*

H-Adapter*



*Preinstalled

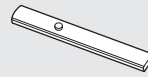
B1



B2



D



SINGLE STUD BAYONET

Required:

H-Base*

H-Adapter*



*Preinstalled

D1



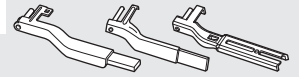
D2



D3



E

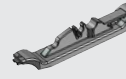


SIDE LOCK

Required:

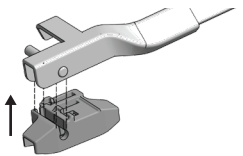
B-Base

C-Adapter



See **SECTION Z** before proceeding

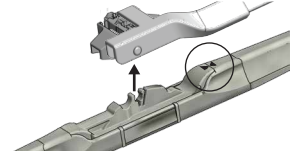
E1



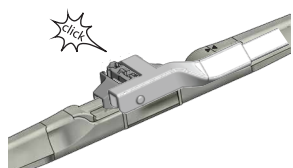
E2



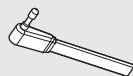
E3



E4



C



3/16" SIDE PIN

Required:

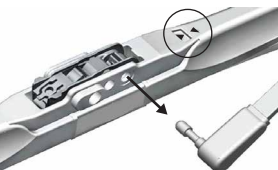
H-Base*

H-Adapter*



*Preinstalled

C1



C2

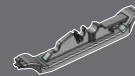


Z

BASE SWAP

Required:

B-Base



Tool may be needed

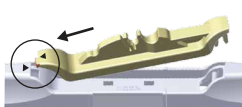
Z1



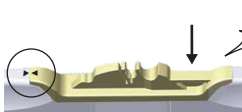
Z2



Z3



Z4



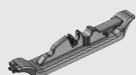
G LARGE PUSH BUTTON (19 mm)



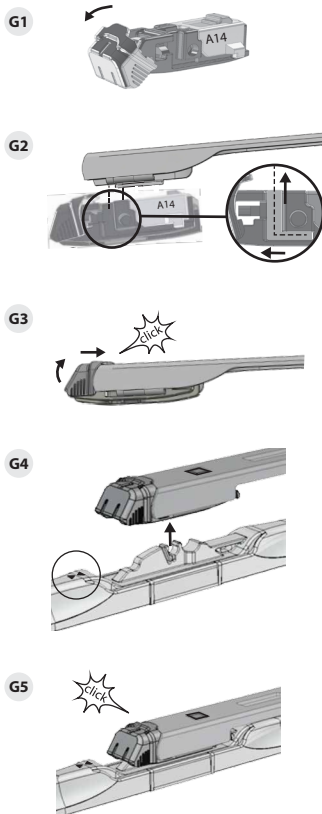
Required:

B-Base

B-Adapter



See SECTION Z before proceeding



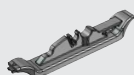
H SMALL PUSH BUTTON (16 mm)



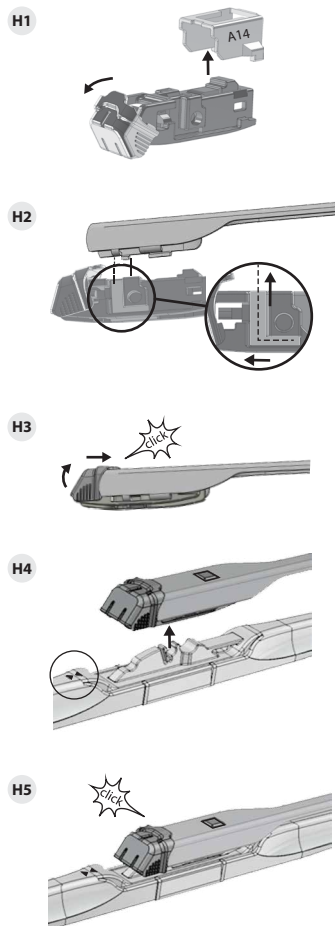
Required:

B-Base

B-Adapter



See SECTION Z before proceeding



I PINCH TAB: TYPE 1

Required:

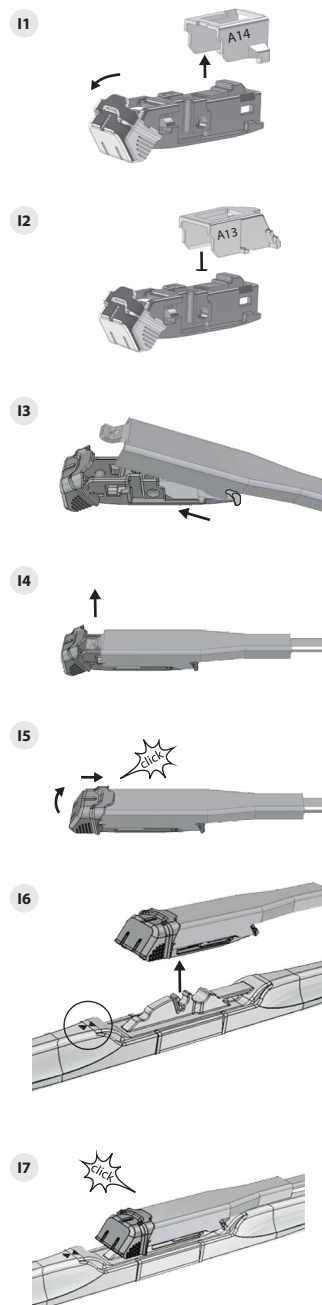
B-Base

B-Adapter

A13



See SECTION Z before proceeding



J PINCH TAB: TYPE 2

Required:

B-Base

B-Adapter

A13



See SECTION Z before proceeding

